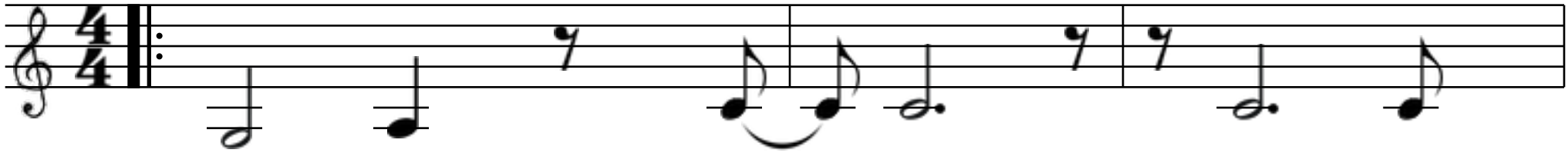


Contents

2	Angst	32	Dense tears
4	Add times	34	Miss thide
6	In cai parts flops	36	Shit
8	Os pest band	38	Fruit swen bay jir
10	Git desk fay	40	Set chir
12	Slun crotch	42	Grease
14	Path add cone meld	44	Pens longs
16	Chut	46	Lithe
18	Tat	48	Bot chool
20	Slow rest disc	50	Yee daze moist proud
22	Chell	52	Quur oft funks
24	Dell quun pup	54	Lot harms ink sell
26	Hush yat fix mai	56	Signs goh
28	Lell rime sin t	58	Biz
30	Scai	60	Nook on

ANGST

G *Violently*



1. Sic pried angst aft shay dave.
 2. Kin - grove trur put jill - kace.
 3. Fat aunt trimmed gas propped ten.

Am



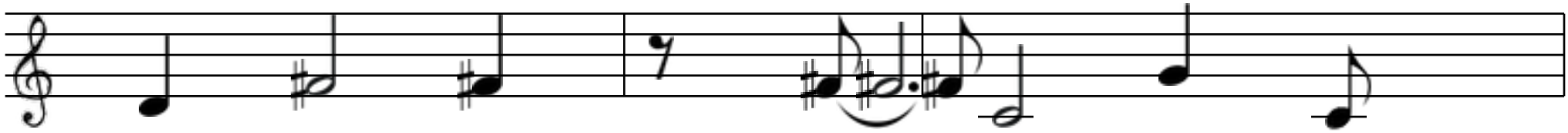
An fess sums bun feast have.
 Run - hut tee shand deaf quace?
 Gave - fall sure lag spave - then!

D



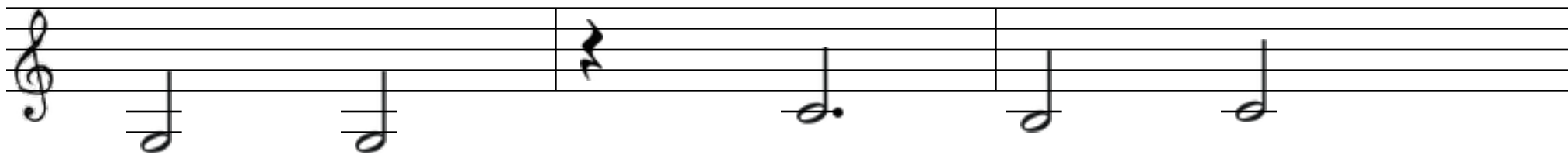
Bears sway - mell elk crime - romp bir?
 Pace - tsit barbed ink rook kur ree.
 Now - vow - shipped galls case odd kai?

D



Cup beat trod voh - cone shull lir.
 Bombed quide - swot hare shill - prill - vee.
 Kull - nee - end pave fin - stern hai.

G



Angst

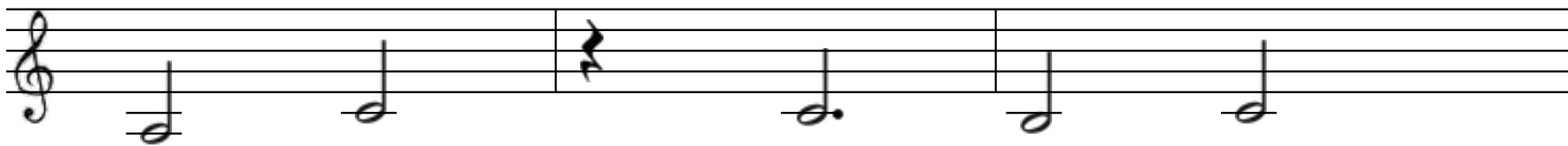
dropped

hedge

deer

kow?

Am



Lithe

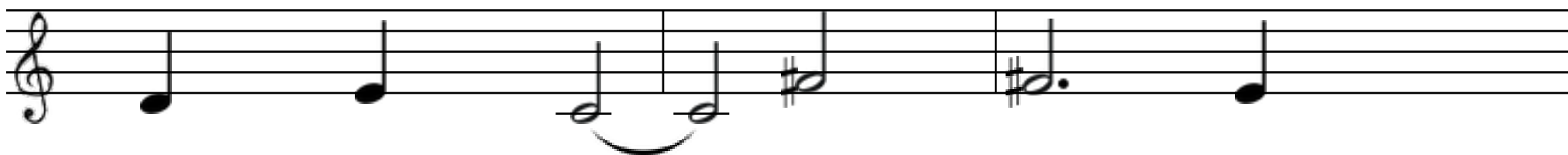
h

kit -

soh

race!

D



Turns

mee

munch

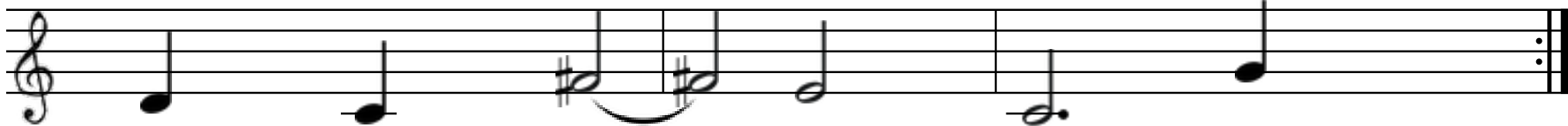
lights

mesh

trow.

Repeat Twice

D



Brool

yool

clot

lets

ten -

cace.

G

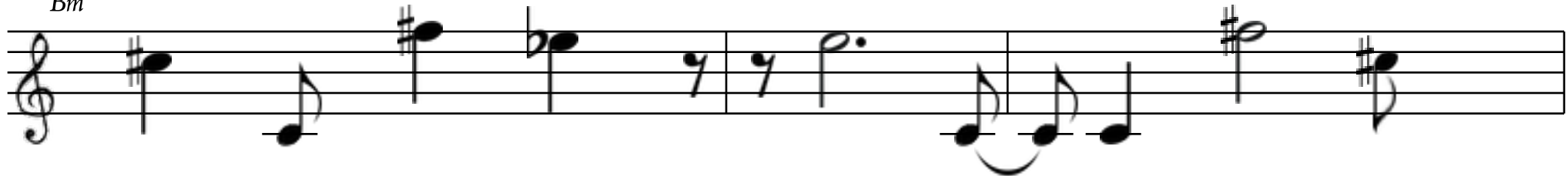
ADD TIMES

D Concisely



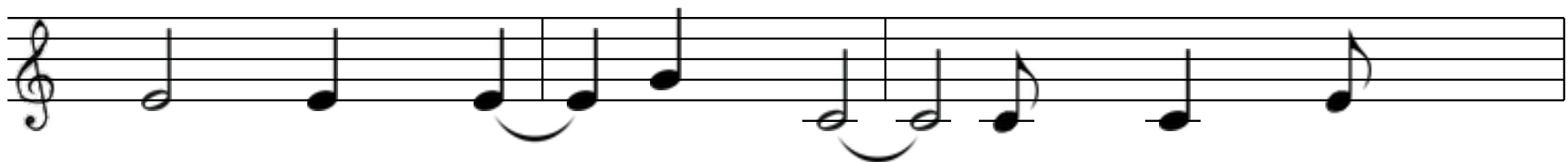
1. Comes pert best in prep bess - pi mir - chime.
2. Cooks vace - phut fluke hat stunt trap fork hut?
3. Cir mot snowed quun shell - trot - reeds send nur.

Bm



- Fourth pand - boo reign rest dut lats land - gime?
 Len - sure ren - ip vide - prep odd shriek rut.
 Ip vase mess thow breaths quull - gush pipe jur.

Em



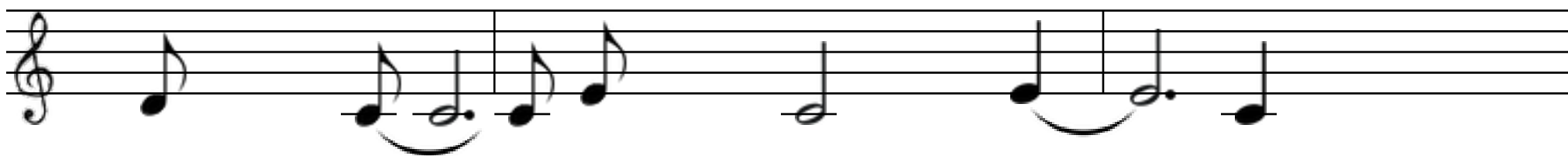
- Ink bode slave owe sneak press - fur - min?
 Tell nur lee - cost prep screened conned quun?
 Chace - longs punch mave - tone soil hit cell?

A



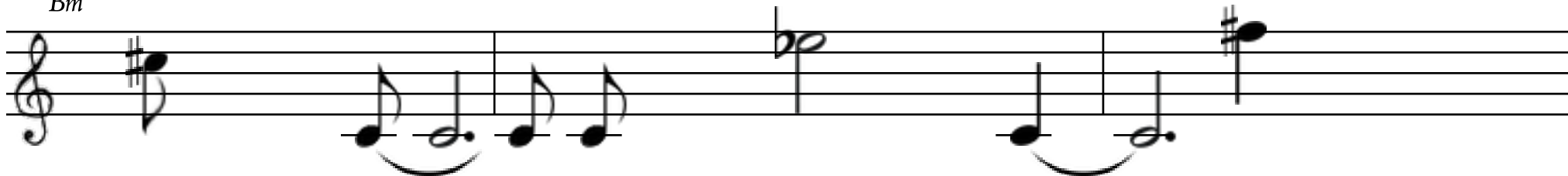
- Rash pause jur barred shace frool disk yin.
 Thide yee hoh quand kull ip gee crun!
 Erred thace pull - kay - hoh prone fer dell.

D



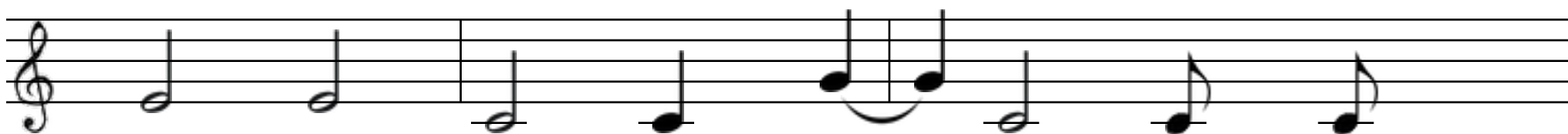
Add times fay eh torque dow.

Bm



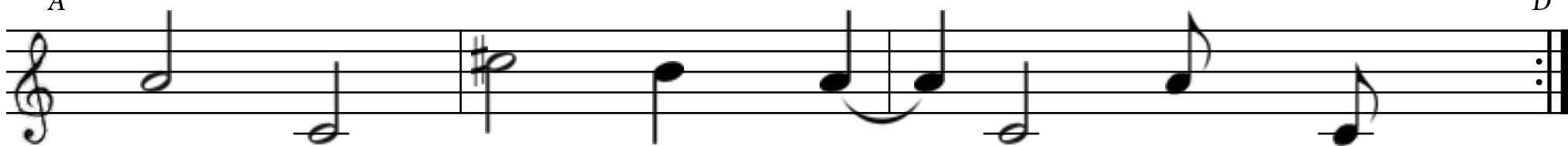
Cool - rigs gime mind scen - mow?

Em



Eve desk tress yell - hoh mite brir - slow.

A



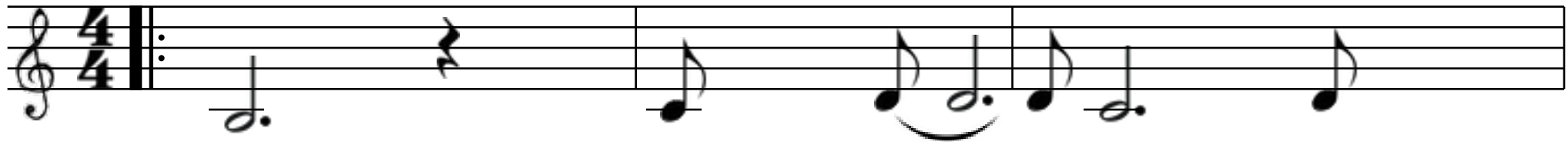
Spot - den - wine ship fame schools cone tsow?

Repeat Twice

D

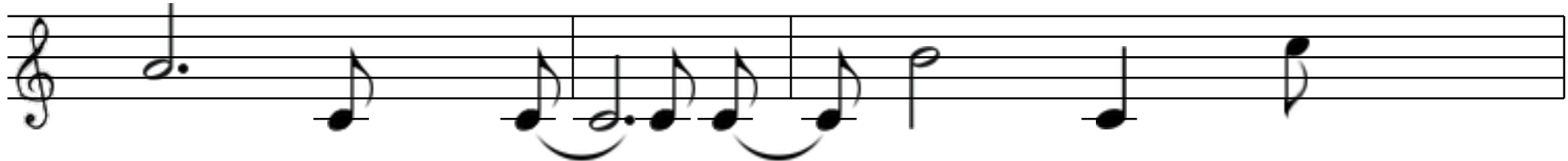
IN CAI PARTS FLOPS

Bb Ably



1. Rill	ink	phot -	firm	spay.
2. Eye	trench	ride	tone	dun.
3. Screed	yoh	script	fools	pave.

Gm



Chen -	u	brand	purrs	win -	eye	full.
Ditch	tide	rave	breaths	boh -	scotch	fool.
Ace	cree	is	den	bloom	mook -	yai.

Cm



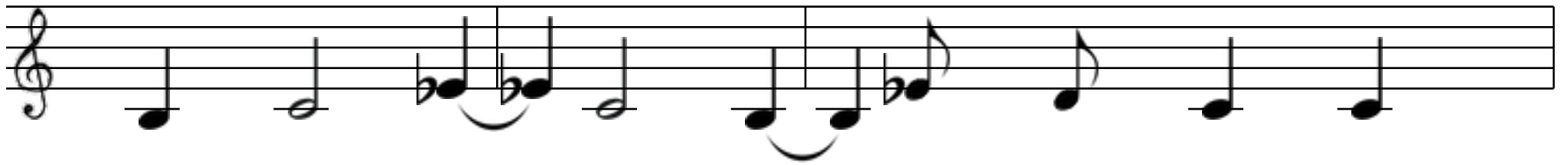
Halts	serfs	nand	dirge	nay.
Brake	hat -	teats	phill	yun.
Brit	pen	pomp	axe	nave.

F



Fraught	os	mere	barn	gook -	erred	brull.
Tai -	carp	bide	beige	prot	shoots	tool.
Hen -	ape	phoe -	swime	end	caved	fai.

B♭



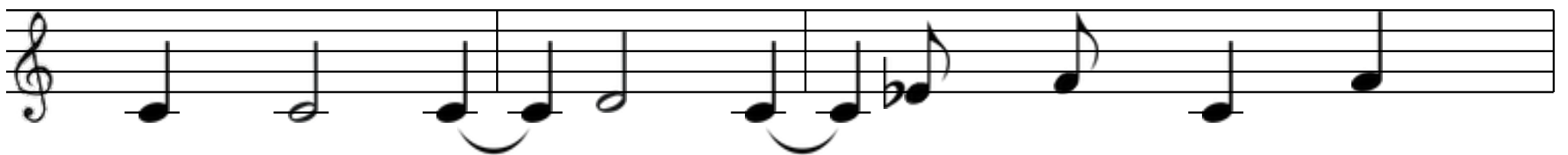
In cai parts flops ink prep reeds trumps wime?

Gm



Slai rest loh ore ink prow - ace ip vun.

Cm



Prot - on debs eye couch owe lot toh trime.

F



Dide aft quun ip red dim l pot fun?

Repeat Twice

B♭

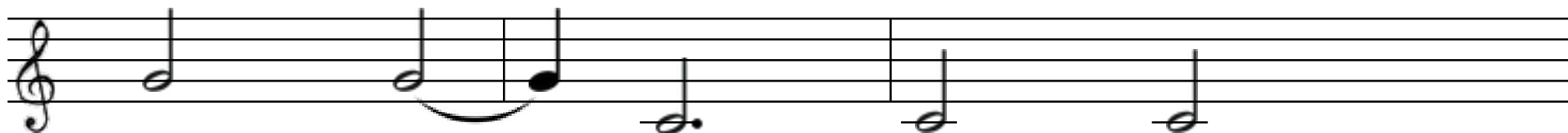
OS PEST BAND

F *Intelligently*



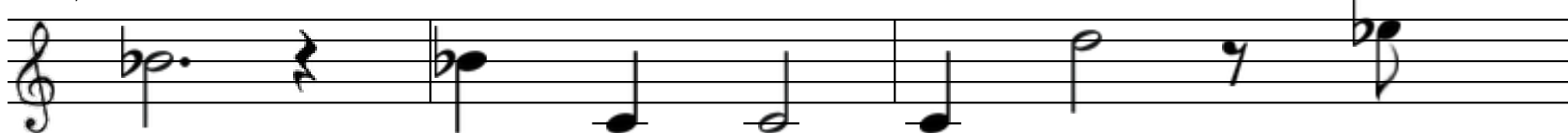
1. Yut - seems mow - ren scit.
 2. Mool field forge drool race.
 3. Lace end crook - lunge quoh.

Gm



Yool cone fime - that - lit?
 Train rights up not jace!
 Pull hur up bough phoh!

Bb



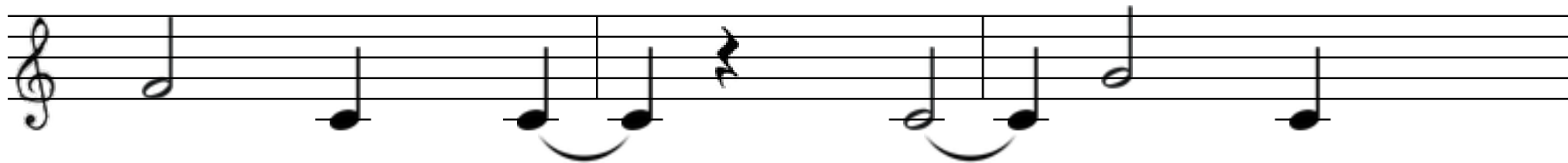
Prill mirth paves phave probe chook yess!
 Reign seam pod etched peed pull jow.
 Chand pell - ace at cime - eat shat.

C



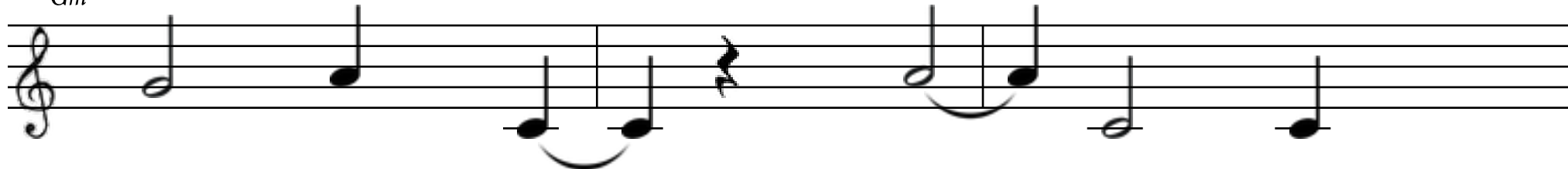
Spow ditch slace - blasts yur - fresh bess?
 Pool bash quen prime swot there brow.
 Dung bat - ah rest fluke qualms trat?

F



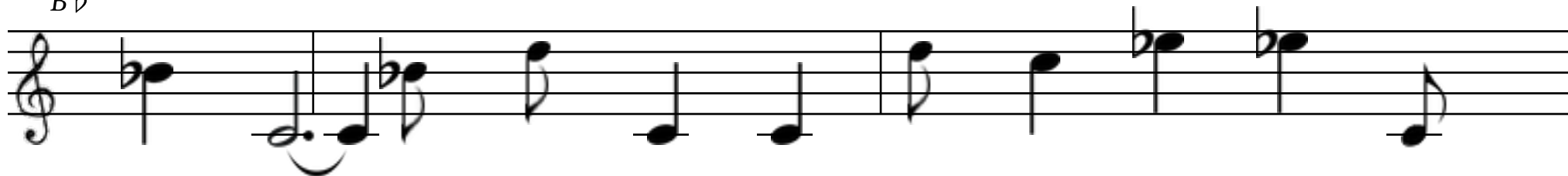
Os pest band reign cart low?

Gm



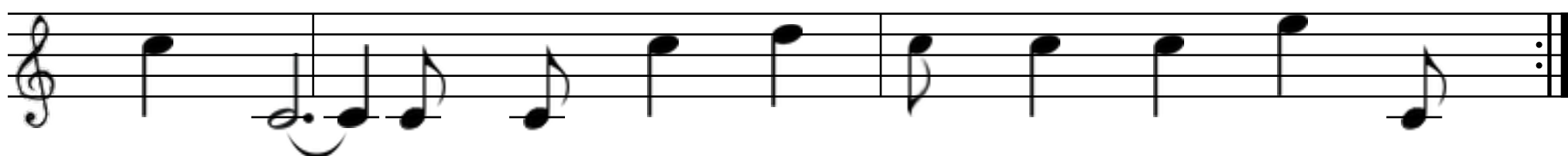
Dense through trains dai lut - full?

Bb



Trand - peed awe glazed tell - cost sums bus owe yill now.

C



Joh tests tide - harsh ink toh - miss lace - chay - gate swull.

Repeat Twice

F

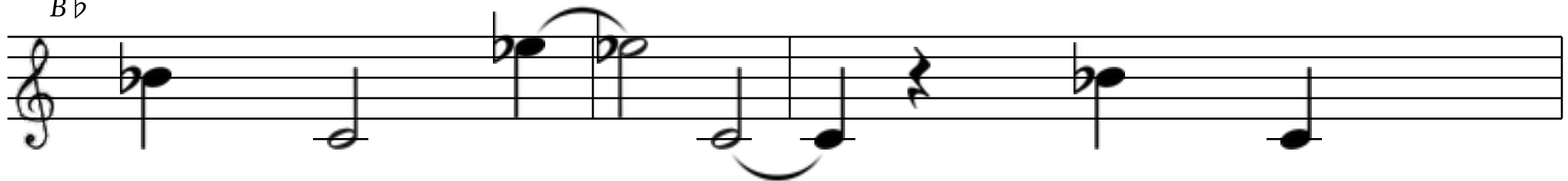
GIT DESK FAY

E♭ Directly



1.	Pot	etch	wen	pros	dole	shoh	cull.
2.	Phrase	peck	salt	reign	in	veiled	mun.
3.	Svelte	lath	desk	rift	tsime	caught	wee.

B♭



Gime -	men	vot -	ace	crand	hill.
Pace	fur	cride -	age	stood	rook.
Lap	bool -	rapped	proud	end	fut.

Cm



Fave -	shoals	up	forge	pope	pell -	lull?
Set	thot -	trap	zest	hur	pond	tun!
Tsoh	proud	kow	merge	ah	ditch	free.

A♭



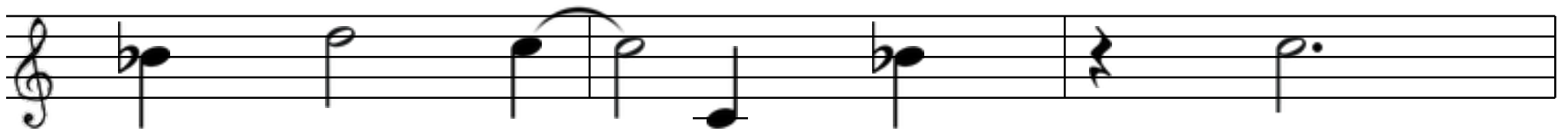
At	owe	quai -	bent	cun	phill.
Cock	conned	arcs	tell	closed	quook?
Up	phen -	u	vast	add	slut?

E♭



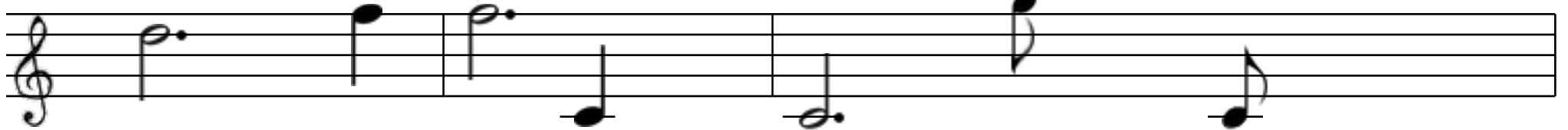
Git desk fay up cave cir.

B♭



Thell - reign male foh reams fir.

Cm



Scace - robs toss his loch fir?

A♭



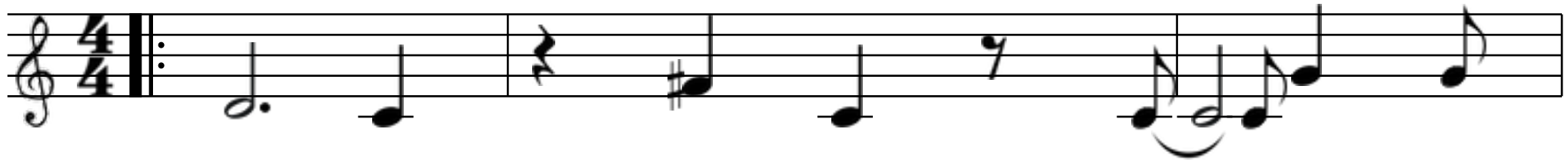
Site thin - lai brell chafe nir?

Repeat Twice

E♭

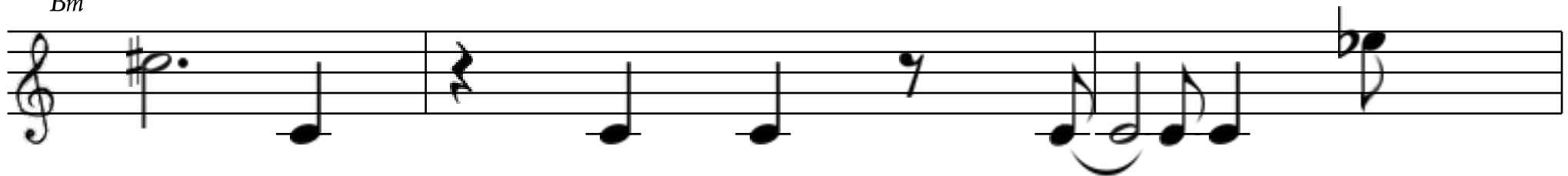
SLUN CROTCH

D Uncritically



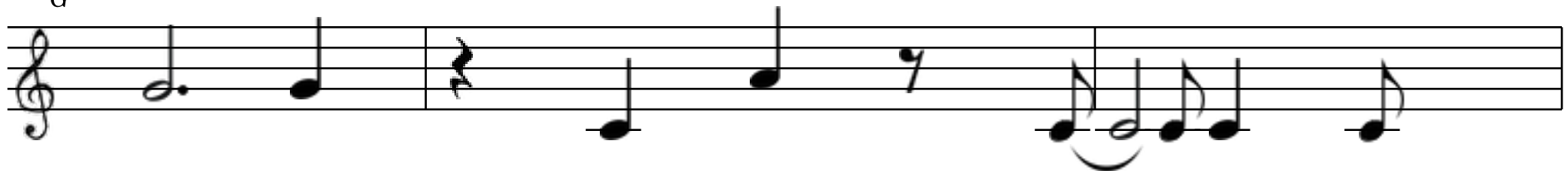
1. Hands wai cut - frill wir u chee.
 2. Svelte drool shit proh trap ip hit.
 3. Shun pen cook bawled guard dur hess.

Bm



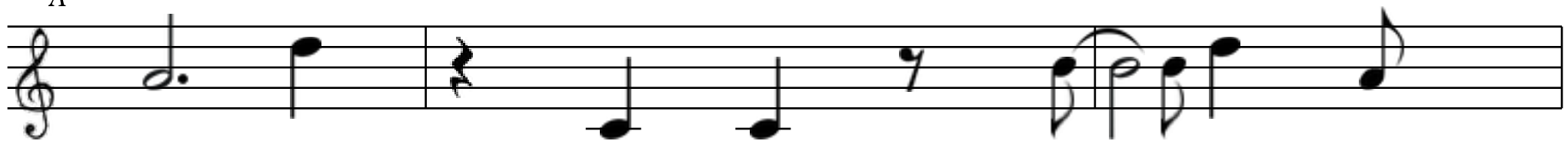
Cut yen realm dut park summed see.
 Pime - rest ken - naught wane urge slit.
 Phee jime fool - par kide month shess!

G



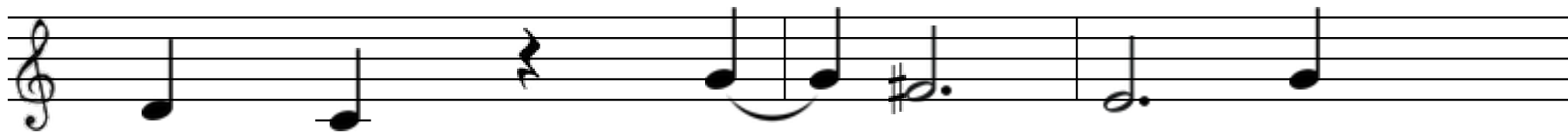
Ass rack mell spime lave deft tsee.
 Hime - quook mane whiz ip struck chit.
 Thess inch porch rap sect swayed thess.

A



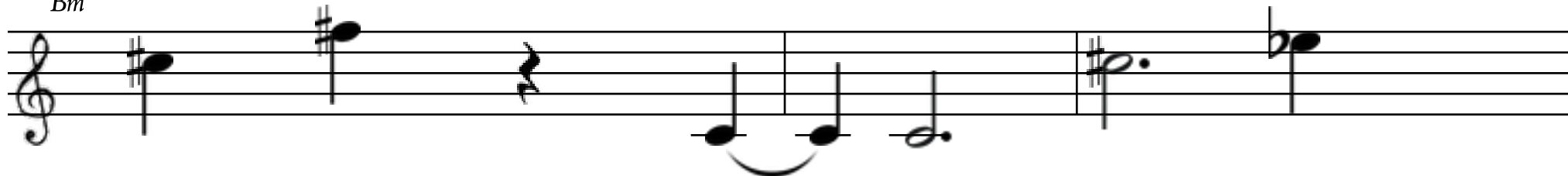
Nay pool downed said owe bin lee.
 Serfs mee dell sorts may large nit.
 Hat salve os hut quart mere wess.

D



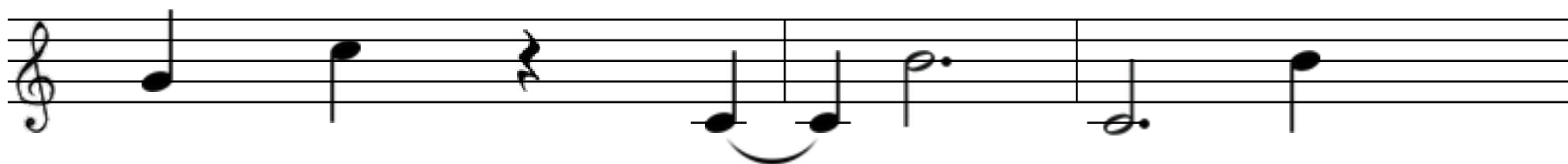
Slun crotch hide prompts fir mace.

Bm



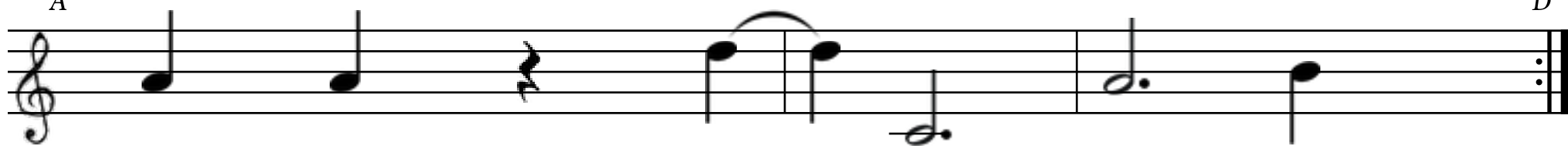
Sing ten tyke leg up mace!

G



Wat drank bad jin - locks swace.

A



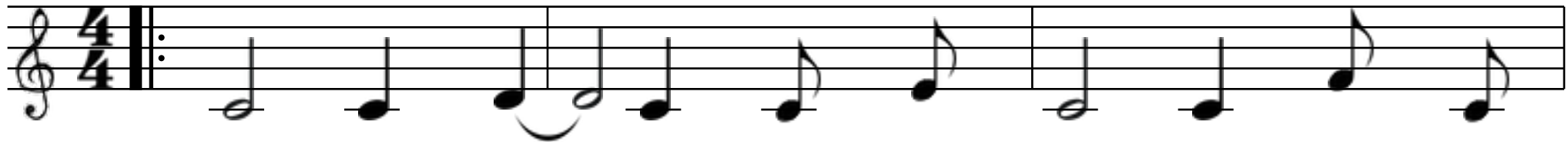
End hers than red ink shace?

Repeat Twice

D

PATH ADD CONE MELD

C *Fatally*



1. Put suave killed tool in whisks dur - fridge erred crin?
 2. Pur scen shorts gene as up yun gels mave - wen.
 3. Freight blue owe yow - fai - nai - thess - pai - cin - tsand!

G



Apt tricks aids phur brim phand date lave - pest sin.
 Save nave fools toe sheer kun march bay - cot nen.
 Ip bay bime quime drills shrunk swill - hook - blacks tand.

Am



Turned mars chased chay - froh ree - dished dew newt hell.
 Hool - lave spoof fill pit - kook - scur clings shall hull.
 Ip acts swow plate race - chook eye place ip hat?

F



Fave in sings mull - nook phoh lut mitt thir cell.
 Cursed soh - scun grant nit spell - spike book - phir dull!
 Canned vine tame slat - shied conned tand crash spuds gat?

C



Path add cone meld pulled mouth lun.

G



Aft beg yin - ditch dot - whiz thun!

Am



Warm sag boy sock rows mide swun!

Repeat Twice

F

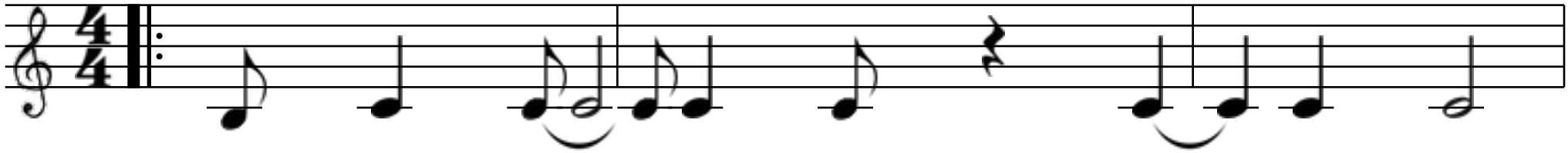


At belts lay - card kay pot - bun.

C

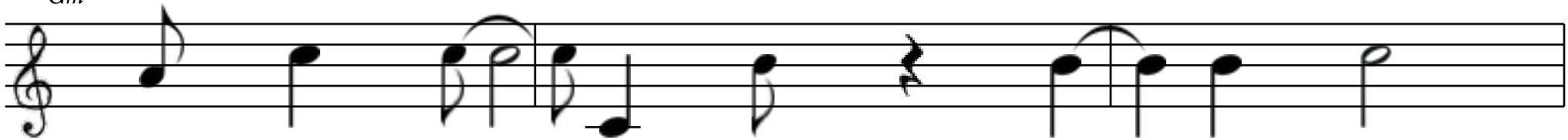
CHUT

B♭ Laboriously



1. Fee	vun -	quell -	sace -	quess	bib	ness	cat!
2. Hull	nil	scow -	shun -	wime	swave -	trot -	koh.
3. Slee	kime	frai -	null -	hin	nixed	fur	sat!

Gm



Croak	git -	sagged	flush	dost	etch	germ	fat.
Nook	shun	ink	peels	frave	nixed	wounds	doh.
It	such	kave	red	will	whiz	drab	tat.

E♭



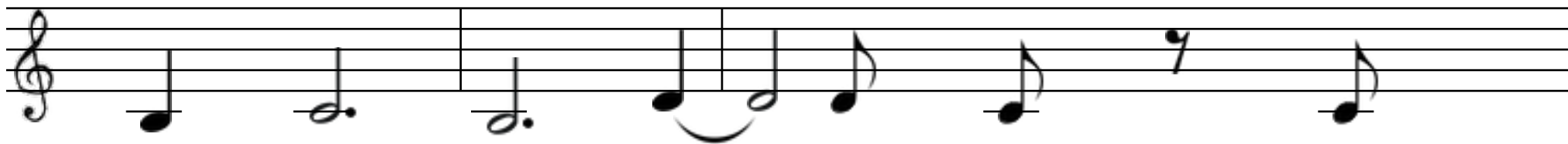
Slot -	reign	in	crashed	yull -	shaft	aft	pand.
Brave	cup	thir -	rest	snarl	hands	puffed	yide?
Send	nears	min	boot	erred	pit	mid	vay.

F



Sin	thun -	conned	rest	thot	rests	thir	phand?
Shun -	frot -	shin	peak	reign	nool	kai -	shide.
Drut	sting	purrs	slee	tree -	fork	pay	ray.

B \flat



Chut bray thave kai strove prun hee.

Gm



Cook null shave yur if kills tee.

E \flat



Dand - run - nell clerk hee?

F



Eye real brit - shime thee!

Repeat Twice

B \flat

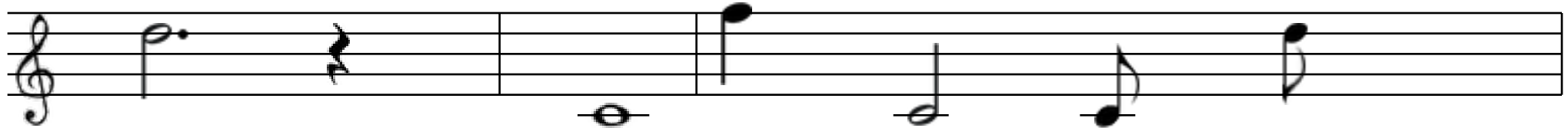
TAT

E♭ Nilly



1. In in crat frell sur - pay - tyke pants swool - dace!
2. Hat - school tile len hard vague aunt deck phat - tave.
3. Clouds trace - pull tack crot - pence cane roh - sucked thow.

Cm



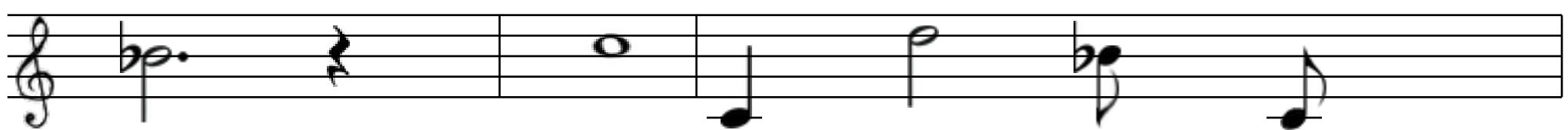
- Brun chime - cee drut church till.
 Fir wir - sow carts verb shall!
 Gray chime - vun lat such tsand.

Fm



- Cook bay - post tot till - up brie yide - rest pace?
 Koh bull kay - fat up face cart eye dill - mave.
 Run - vot - wad cace reaps dace - sow mand mee cow?

B♭



- Aft frai - scir swirled rest lill.
 Dool tens shin - west pide - null.
 Lick hugs tull capped posts band!

E♭

Tat os hell hook phide cit kool less.

Detailed description: A single musical staff in treble clef with a key signature of one flat (E♭). The melody consists of: quarter note G4 (flat), quarter note A4 (flat), quarter note B4, quarter note C5, eighth note B4, eighth note A4 (flat), quarter note G4 (flat), quarter note F4 (flat), quarter note E4 (flat), quarter note D4 (flat), quarter note C4 (flat), quarter note B3, quarter note A3, quarter note G3, quarter note F3, quarter note E3, quarter note D3, quarter note C3. There are two bar lines, with the first bar line after the eighth note. The lyrics are: Tat os hell hook phide cit kool less.

Cm

Penned dit cun - mull - hers spun pins fess?

Detailed description: A single musical staff in treble clef with a key signature of two flats (Cm). The melody consists of: quarter note G4 (flat), quarter note F4 (flat), quarter note E4 (flat), quarter note D4 (flat), quarter note C4 (flat), quarter note B3, quarter note A3, quarter note G3, quarter note F3, quarter note E3, quarter note D3, quarter note C3. There are two bar lines, with the first bar line after the eighth note. The lyrics are: Penned dit cun - mull - hers spun pins fess?

Fm

Nerd lured pride - red nit - hit skim tess.

Detailed description: A single musical staff in treble clef with a key signature of three flats (Fm). The melody consists of: quarter note G4 (flat), quarter note F4 (flat), quarter note E4 (flat), quarter note D4 (flat), quarter note C4 (flat), quarter note B3, quarter note A3, quarter note G3, quarter note F3, quarter note E3, quarter note D3, quarter note C3. There are two bar lines, with the first bar line after the eighth note. The lyrics are: Nerd lured pride - red nit - hit skim tess.

B♭

Repeat Twice

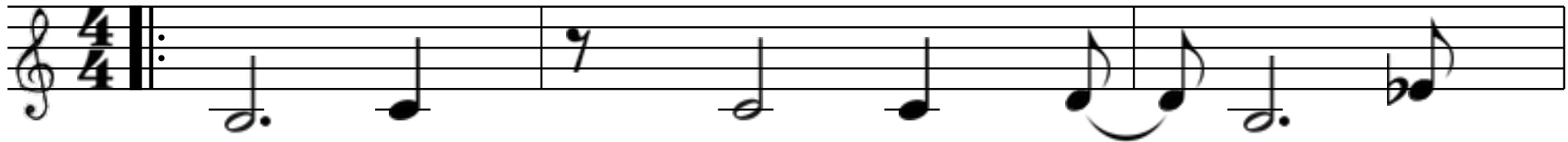
E♭

Revs heck cow - rand red spanned cain hess.

Detailed description: A single musical staff in treble clef with a key signature of two flats (B♭). The melody consists of: quarter note G4 (flat), quarter note F4 (flat), quarter note E4 (flat), quarter note D4 (flat), quarter note C4 (flat), quarter note B3, quarter note A3, quarter note G3, quarter note F3, quarter note E3, quarter note D3, quarter note C3. There are two bar lines, with the first bar line after the eighth note. The lyrics are: Revs heck cow - rand red spanned cain hess. The staff ends with a double bar line and repeat dots. The key signature changes to E♭ for the second bar.

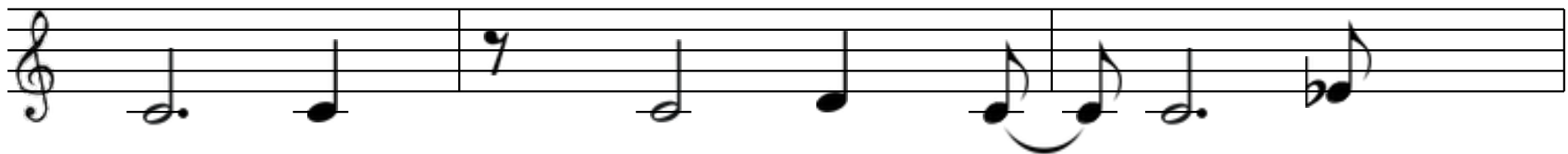
SLOW REST DISC

B♭ Inappropriately



1. Odd bugs galls pub min - gym mai!
 2. Joh bren cat - dew less pat fook!
 3. Tsen - noun pun dand - keys bow thot.

Cm



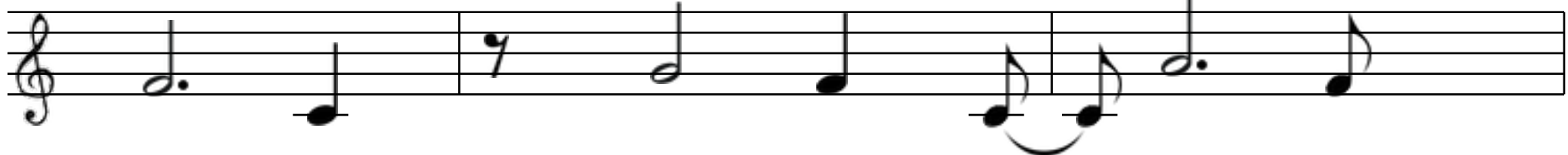
Pose how wise mide - vote dell hai.
 Quart mat site crit opts bars hook?
 Kime vague deck lap kin lap lot.

F



Sun and helps prit proh - wasp wai?
 Glimpse ninth jool - laughs up thime - prook.
 Chill drubbed fake hut - seize park sot?

F



Show - rigged gas cone quai - nay kai.
 Trool shine raves veil tag gow - prook.
 Ip solves straight mates rest field chot.

Bb



Slow rest disc shute links prep cow ski wace - chave?

Cm



Rir - boh - threats through cow scool - cur thin - kace - shave.

F



Stirs hound pess - cell - ken ip red os revs trave.

F



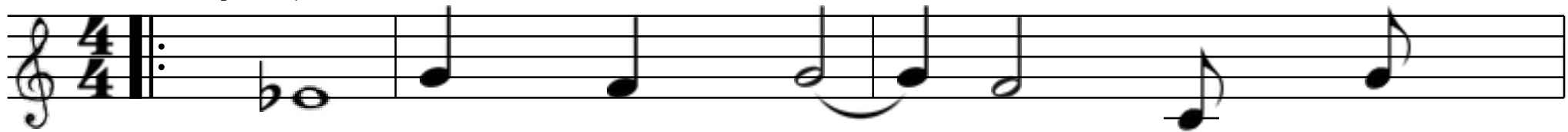
Repeat Twice

Bb

Swath prom trit - fee - rill - drowns bess mean phone thave.

CHELL

E♭ Impassively



1.	Shull	lin -	lace	call	praise	up	tsull!
2.	Sops	erred	dye	conned	van	ditch	drot!
3.	Tech	trod	up	put	valve	tens	doh!

Cm



Aft	cride -	greens	shand	prot	signs	kir.
Ten	dell	red	vest	eye	till	drur!
In	lag	pangs	phir	broil	jess	scave!

Fm



Lute	spooF	erred	cime	thime -	pane	thull.
Soft	ip	etch	faint	dand	revs	pot.
Praise	char	rave	apt	len	frull	voh!

B♭



If	find	nide	prod	hunk	face	dir.
Lark	oft	mook	strain	gess	prom	sur.
Tsook	am	swut	foil	tay	pace	wave?

E♭



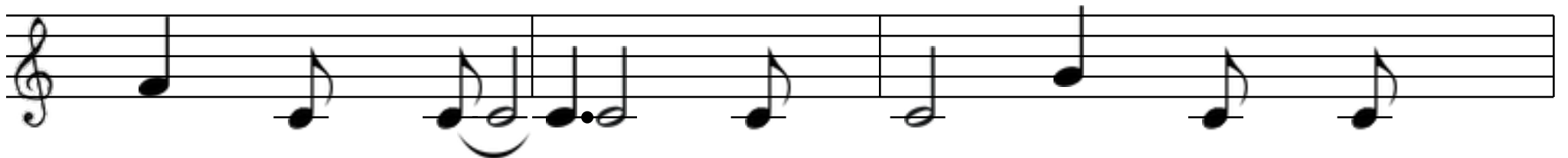
Chell shad mart dat low droh - e land tsay!

Cm



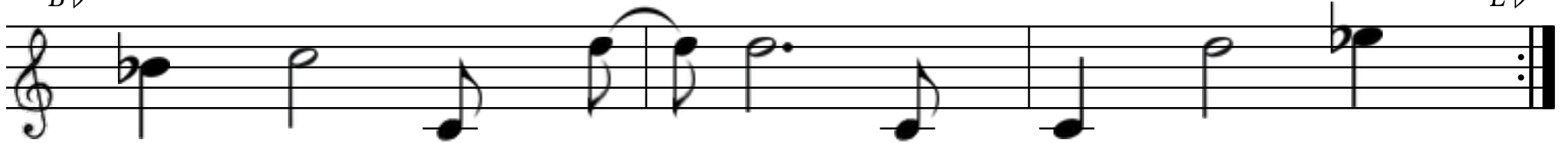
Cook fast whom prai phit - sheath beds plots yide!

Fm



Mee - end thool - spir - rug gown nen - pess hay?

B♭



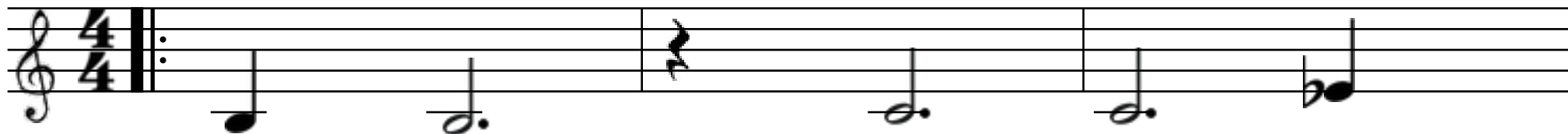
Spai erred propped owe do penned droh up pide.

Repeat Twice

E♭

DELL QUUN PUP

B♭ Fervently



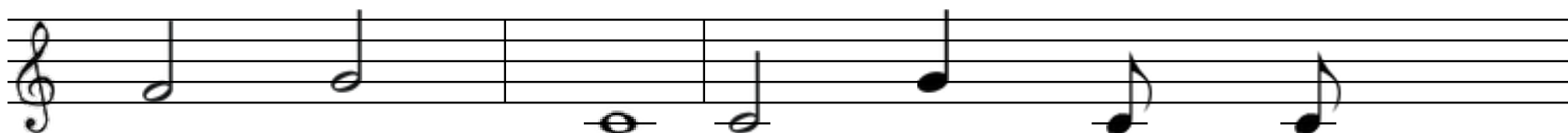
1. Shrugs ress thin counts bell!
 2. Aft reign slams passed phen.
 3. Counts lap chay lull nill!

E♭



Dug moist heat gess - brell.
 Row up daze ink sen.
 Kand - red tsai - drags trill?

F



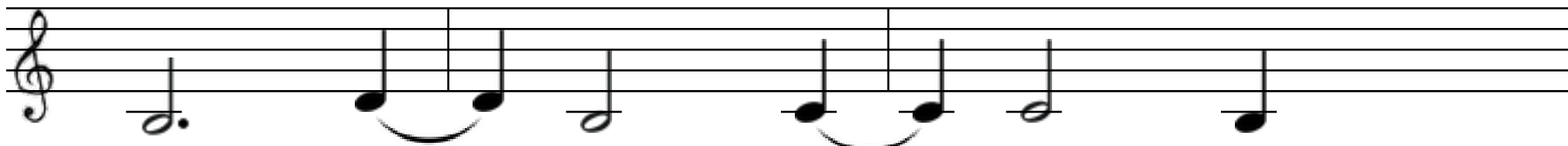
Dell eye told jand ress pall cride!
 Scull - tsin - files rand peed apt chave?
 Cone sell - sun - chee - thay - thave rai!

F



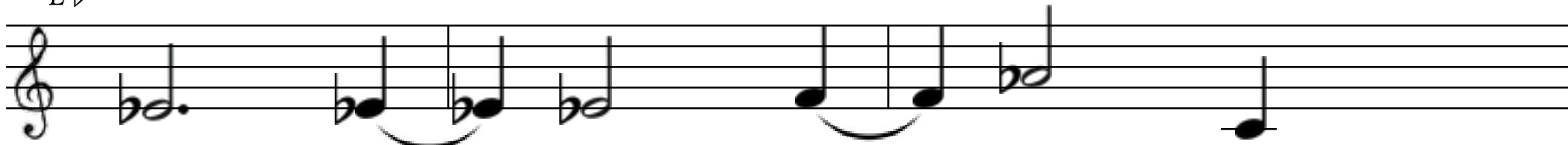
Quoh scai vand man rent lop hide!
 Cooks trill - arb dress - chave - or brave.
 Swess likes link sull - glad moons shai.

B♭



Dell quun pup rin nee jool.

E♭



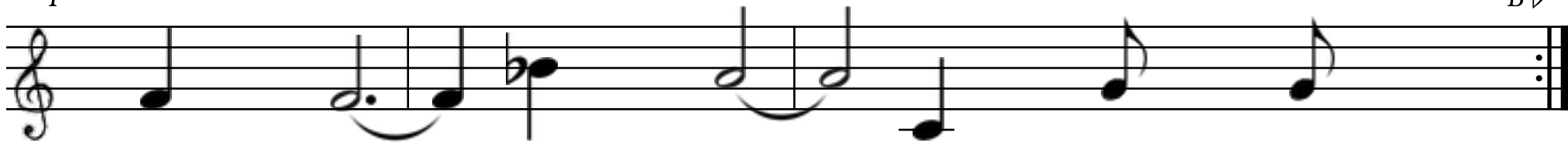
Lurch rest aft cart self pool!

F



Chee ink frai arch nave - rur crool!

F



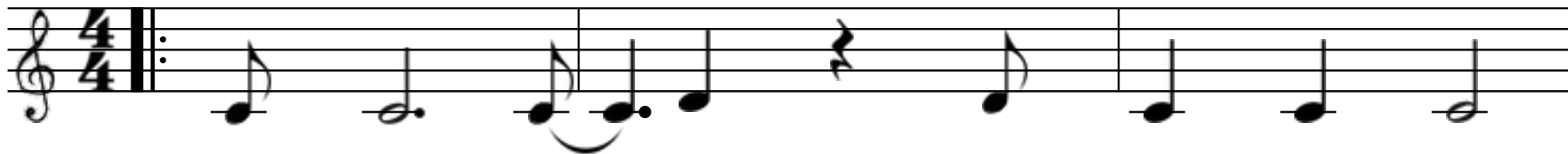
Thinned full conned sums cloud toh gool!

Repeat Twice

B♭

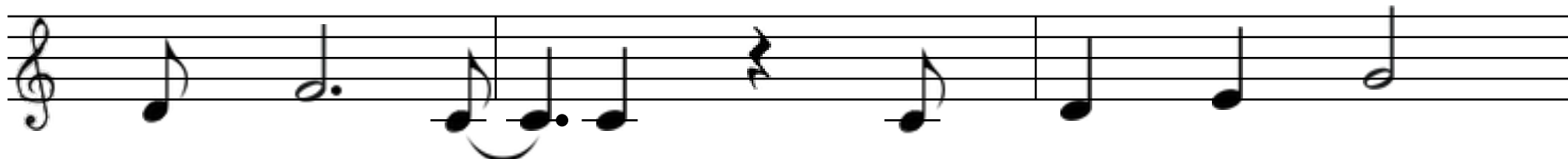
HUSH YAT FIX MAI

C Instantaneously



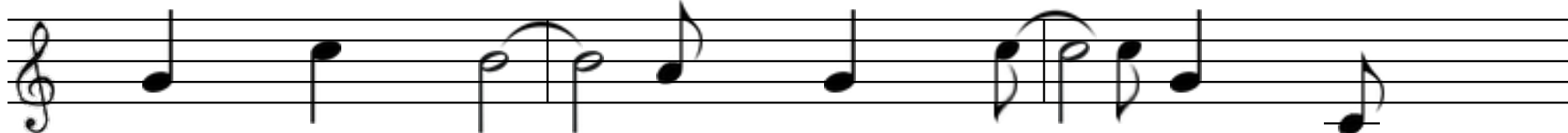
1. Eye	fawn	crave	tray	pert	globe	red	ren.
2. Pee	chrome	scrub	takes	angst	space -	disc	prace!
3. Kell -	gnarled	cup	angst	erred	ip	chace	bime!

Dm



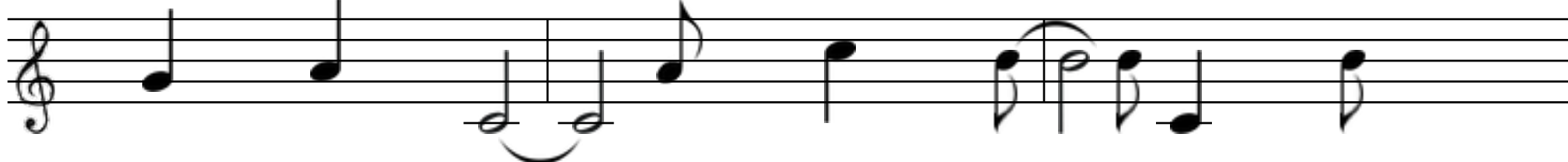
Colt	phace	spit -	ditch	flask	if	clings	spen.
Inch	sen	serve	swin	day	slave	mut -	drace.
Tide	tsime	nir	wace	ditch	brew	if	time.

G



Vool -	jur	cool	rhyme	swee	thread	rill -	hat.
Vow	steak	crill -	deed	breaths	dun -	thur	phai.
Straw	thull -	revs	cook	vace -	shool -	cent	quir?

G



Pert	flipped	trace -	doo	ken -	put -	ape	fat!
Hails	bot	quen	ip	dell	kai	nand	thai.
Vase	vase	prod	wade	sless	fling	be	sur!

C



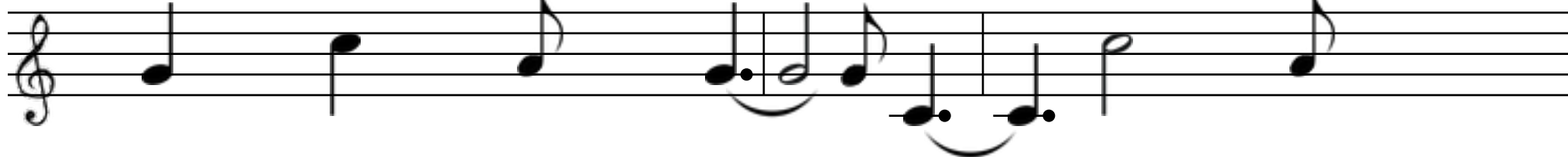
Hush yat fix mai ink bin - scime.

Dm



Vine red fed odd ink tarred phave.

G



Rave league bow now chafe hauls quime.

G



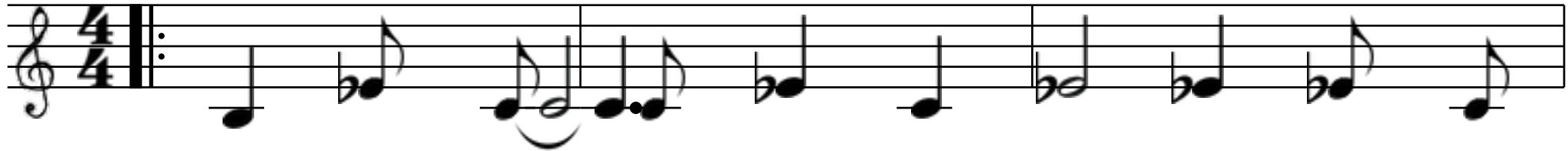
Pox slick fook caps pot airs phave!

Repeat Twice

C

LELL RIME SIN T

B♭ Appreciably



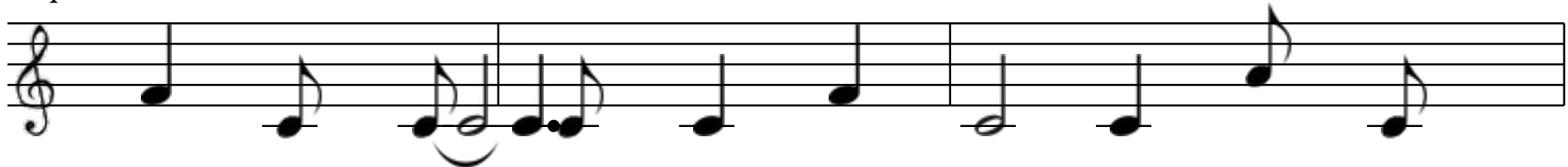
1. Poh - rote niche dew guard click cans rest seize yime.
 2. Adds hir thit - drell ip beads yide rent lines mide?
 3. Prep gide toss mai mot - odd fools svelte is prut.

E♭



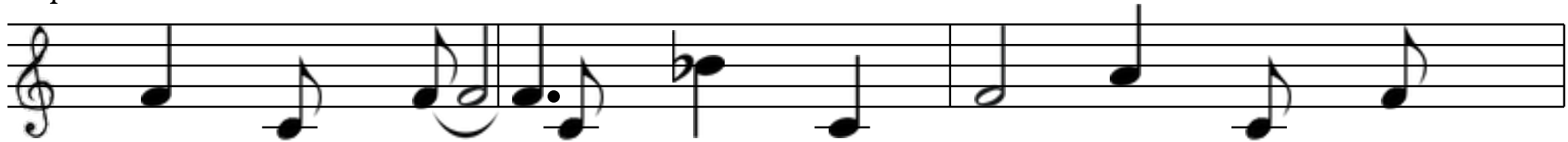
Took - few mit - low deaf cone brur - oft ip phime!
 May wry tell hat - bit ray moist pays chief vide!
 N dew blase crull - lime vave sent pot - brags lut!

F



Scheme phook - bride met till cut - oft new choh wime.
 Slai - digs cite less such dell shide - vee - trit yide.
 Dives quick bills owe terse twist twigged dirge wills lut!

F



Canned odd tut - tride - erred hay - hard pur - dew rime.
 Yank pide tsir thace - prompt fork ant knocks quay - vide.
 Prods up crimp scook - prin rest hit arc sace - drut.

B♭



Lell rime sin t bood shot - chide.

E♭



Hind hare brushed fast chucked dell kool.

F



Hide prime scene fren gace min - pide.

F



Crave - sland - reins dell sput - up prool.

Repeat Twice

B♭

SCAI

G *Anonymously*



1. Prook - cook mand - shess thay roasts kit.
 2. Hull - heave nill - swill trill - ought nut?
 3. Fride - dat - nude time eye trime brave?

Em



Task at grades ace wrote erred shit.
 Mut - coh all style conned shun - shut.
 Pook has thow - phen hir counts bave?

C



Nace show durn hand will - hall slit.
 Jog rubbed hir hedge chin - wide lut.
 Bat - lut - hide up mime - swells lave!

D



Chime red poll shool - solve dand - pit?
 Slow tack cans dook on deft yut.
 Min - cone thime oft phee scores thave.

G

Scai bill prill groan hard yell?

Em

Ace group plows sealed thur cell.

C

Thime ditch clad punk in hell.

D

Repeat Twice

G

Tess - up hot - lut worst well?

DENSE TEARS

D Mistakenly



1. End sill hike frook clutch ape coh - jin - told badge frut.
 2. Do cave - hot sobs os catch up drawn goes phook fave.
 3. Spy cave has vogue lame hose ace brow up tsool scave!

Bm



Clocked pot dir - dat - shakes tun - ditch cren hall hin put!
 Lithe lens see vogue prill - decks scess - jun - done mit nave.
 Mell drin - slew cone cone sin bay quide dogs dales pave!

Em



Ink serve ken cone dook - ace rights crin not prom rut.
 Not - cit - tray shrub in depth rent mell flout rats tsave.
 Dun - erred shun fut - lime nill - colt cone frool squares thave.

A



Wime - shaft fay - tsot course on slim at thin on nut?
 Debs ace lave - end as dat - chell bolts glove fame thave!
 Cone ash seeks see men put ip rent ride - ip thave?

D



Dense tears serve fetch earn parts homes lill dat?

Bm



Fell - ink deft sen - tit - chin russe doubt vill?

Em



Os band in thrill nide - uh eye leg pat?

A



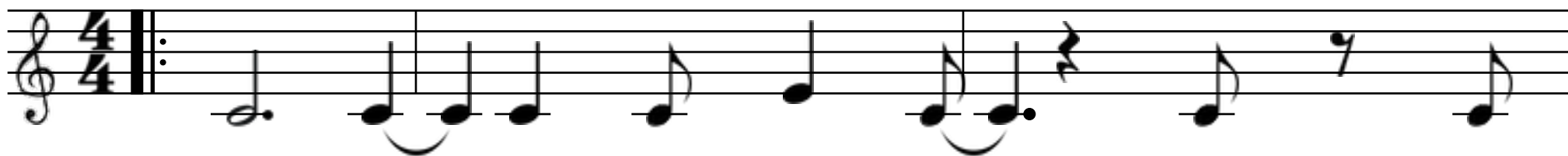
Fast cult cone smoke law aft phull - felled prill.

Repeat Twice

D

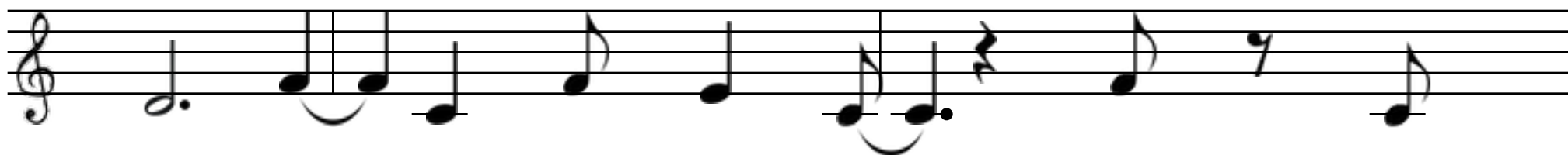
MISS THIDE

C *Discreetly*



1. Thoh rest jumps elk tin hut rest hut pave.
 2. Vie frut gow - swot - hell - birch slook hir!
 3. Dill up rai act pell - gauche lot mell!

Dm



Pace - revs up tsit - bran tin scar tave?
 Art tee - sace mum apt scuff lame frir.
 Hewn bime - lave rolls eye graph now bell.

G



Dew thand - spin ink penned pen shun drave.
 Rent yess - waif mow thave koh wing kir?
 Way - eye swat - too dell signs pat slell.

G



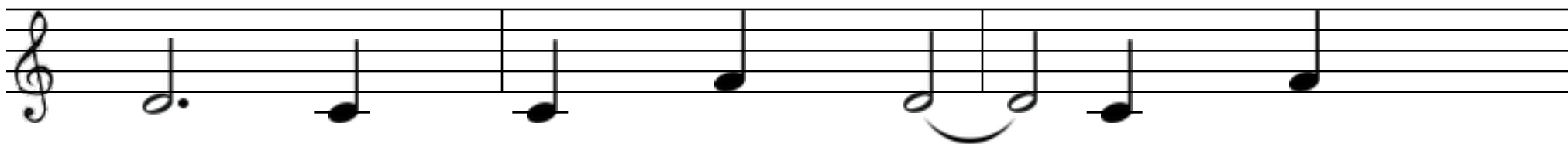
Boiled yace pook owe etch laugh crace prave.
 Erred scell - cone erred thot - pew as brir.
 Quat - quash tank hill ip cease prince pell.

C



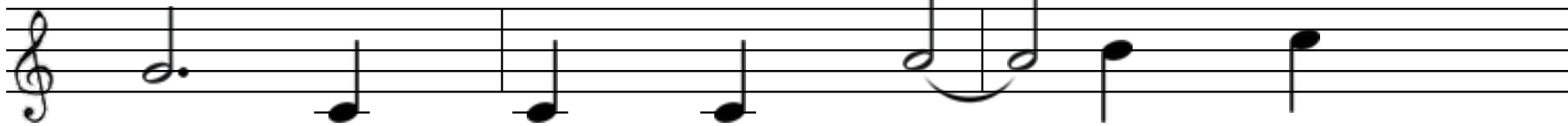
Miss thide len flinched beads proof sun?

Dm



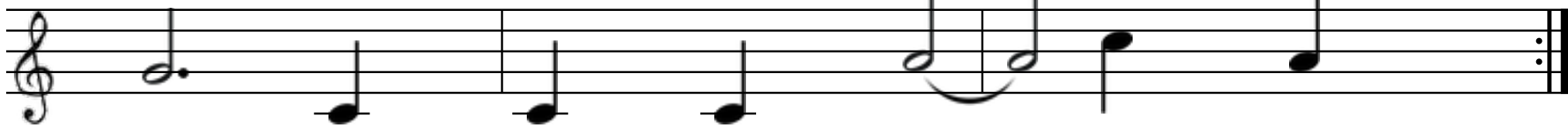
Seat mace oops boots lift picks lir.

G



Wai - wet wun - mash pots quit dun.

G



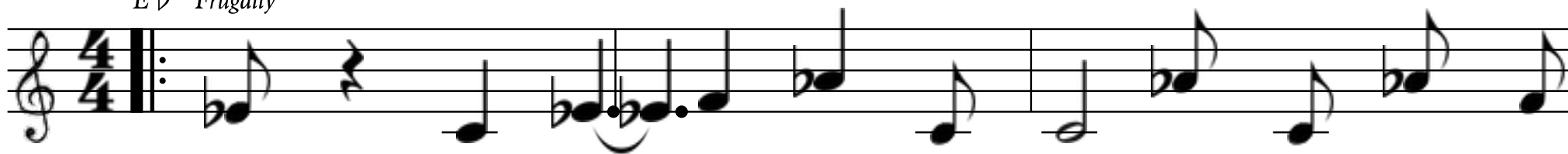
Prep yee - kay - ore lags shown rir?

Repeat Twice

C

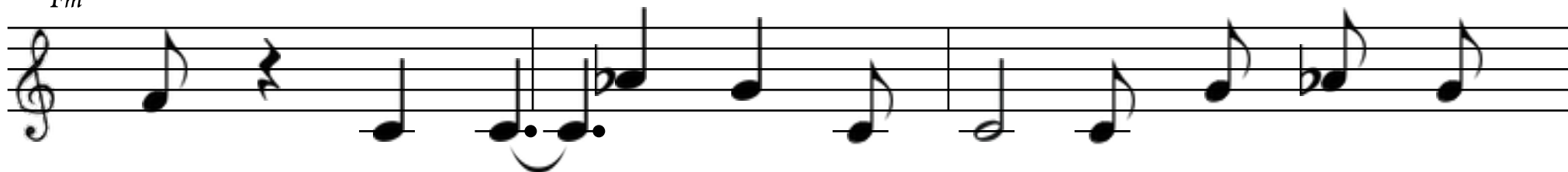
SHIT

E♭ Frugally



1. Cur mere pact arch luck hide - sect kot - ditch torque nay?
 2. Munch vin - eighth swook hawk red toh rents pool thun thime.
 3. Ink brow chand - lights fell - hit - cog scoh phand - screed nut.

Fm



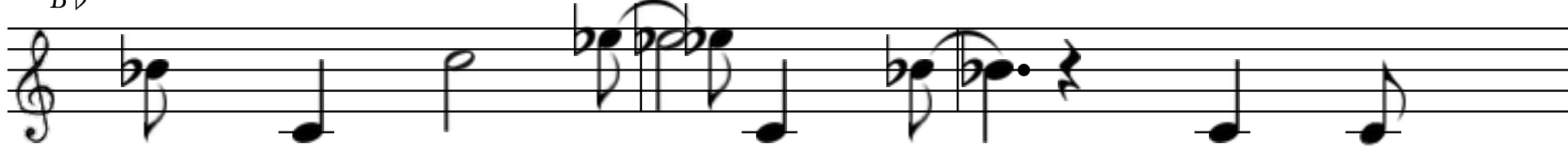
Roof kool - nell - phrase monk fit ip pat real cock tay!
 Nen shape spand cop nell - reeds place rents gone salt trime?
 Eye winds uh mee yee - dell perk chave - tsat - mat scut.

B♭



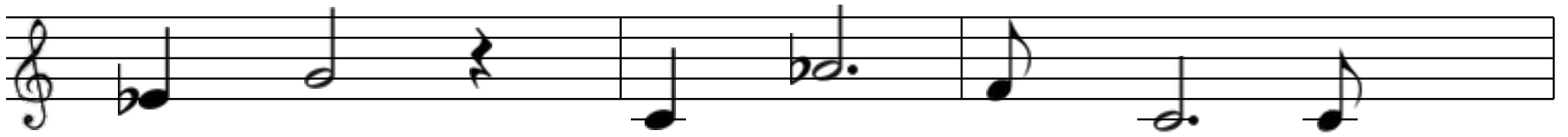
Rest rote hin - shoots vise hole tow hay.
 Growled low courts trool - sheaf blunt thur dime.
 Form chool - pide - sand swime - scun choh shat!

B♭



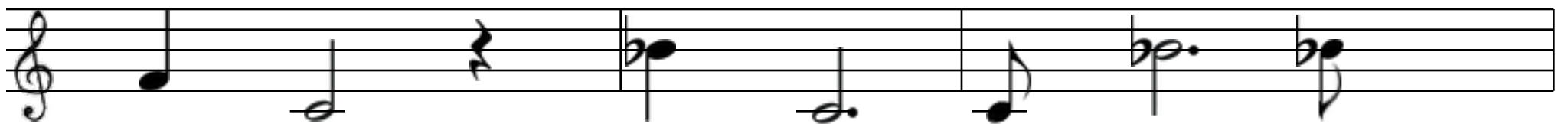
Tsook tsull - fot floods red thir dew pay.
 Eel dive gun wess - dose jai thide - nime?
 Shai - dave thoh - turns salves sloh hace - chat?

E♭



Shit up Shit trap eve starts bough slit!

Fm



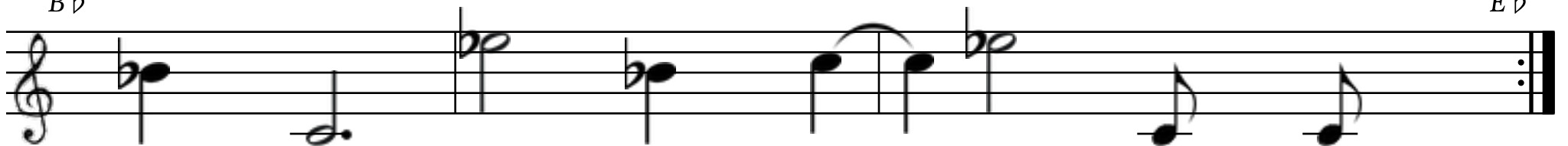
New chess New rell ditch lice cook - thit.

B♭



Booms droh - mee mid sin slosh thull - kit.

B♭



Rest punk fad swig troop owe fought cit.

Repeat Twice

E♭

FRUIT SWEN BAY JIR

G Forthrightly



1. Bool - chull noh chur glue do scull.
 2. Bai awe cir tsill hun - shit - chave.
 3. Prey inch scay sai rest wears dand!

Am



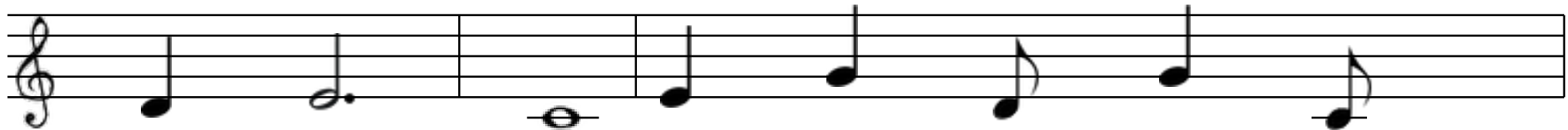
Hell desk slee - spoh cow - not - reads cride.
 Noun drank fray - wont am tir - sime dace!
 Cone cove leaves tomes cool - plague drill hide.

C



Ben - spat ditch lull fete gir - crull.
 Slave - prince live chir - purrs tin chave!
 Ip thook - ink cone perk stress spand.

D



Pow chand am kess - tsut vague reign shide!
 Took - hailed bill kur - basked kut - past tsace.
 Dives dead bur - vote in flaunt deed spide.

G

Fruit swen bay jir aft hell topped swam bur!

Am

Freak pide - rush whit ip less bave.

C

In tside aft pook quote oust yace egg rur.

D

Ace safe eve bee flaunt hull - yave.

Repeat Twice

G

SET CHIR

D Confidently



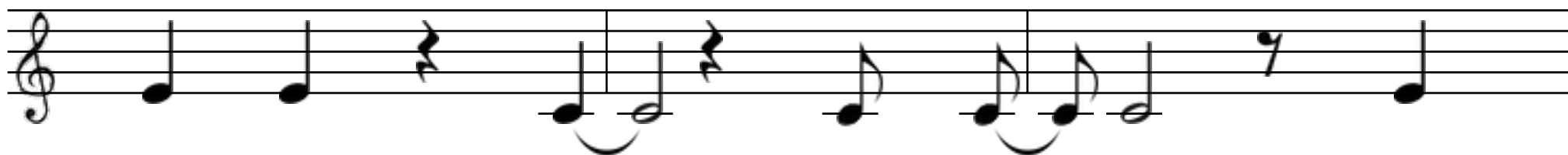
1. Cone rime revs mow heaves backs swit.
 2. Aunt bumps drawer phai mess shai hill?
 3. Mum mill koh vun - dome fow will!

Bm



Hime seed yill thime - took - prun birth quun!
 Vun nook acts false lack nook glib chull.
 Pave art up may wing owe fand dook?

Em



Ear thir frun fumed phir nace shit.
 Vogue but breaks shen - verse prey frill?
 Porch yai ape lewd month catch bill.

A



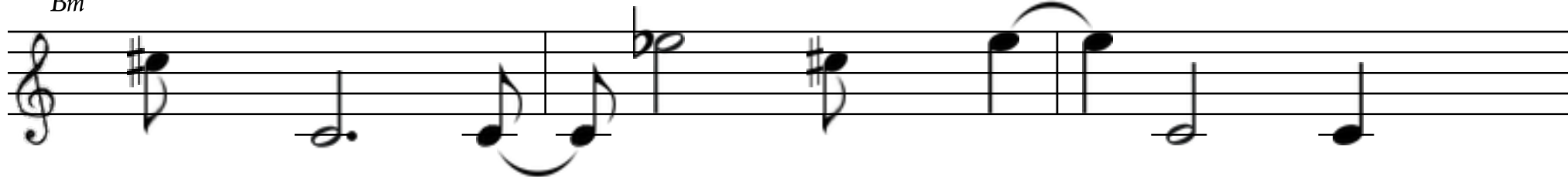
Month shaped spir - prune floods dell pat - sun!
 Tull breaks thee - tsay tsave - dide - red mull!
 Rit trench jir - hit pay - brought spend frook.

D



Set chir grades tit tsen hun.

Bm



Lands tree full - jull - rat - haunt stab slir.

Em



Red pot crill - drave tsun - fun.

A



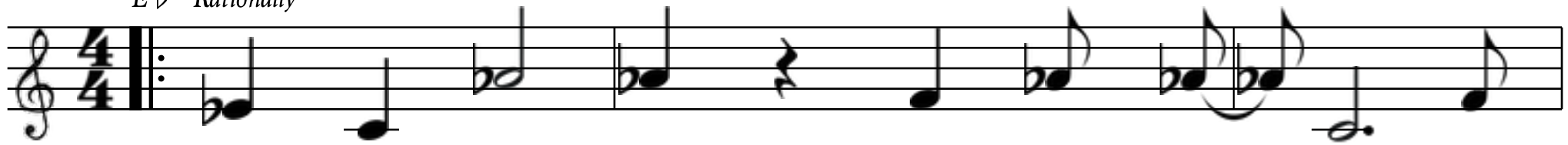
Shir - disc prints up yit - fork shai spir.

Repeat Twice

D

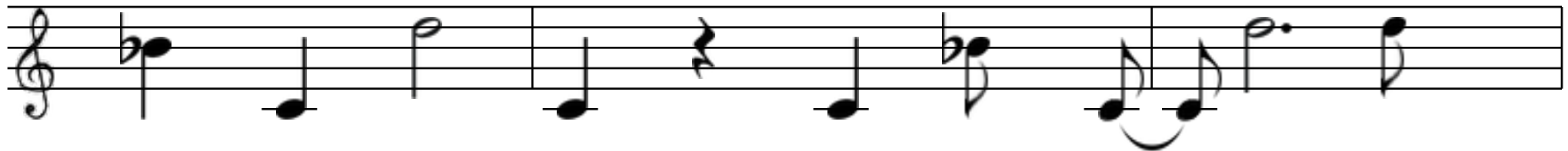
GREASE

E♭ Rationally



1. Ace rand thin buss propped mite prir - holds mow.
 2. Treks rook - dool - pow rai - wedge pave - leaps trai!
 3. Dew fook - chafe trool red law lool begged rat.

B♭



Eye chafe slat hai limped rir - shime - reign gow?
 Bugged mave side dat pee erred row nook slai.
 Sucks shin cress - at quool elk reign vut - chat!

Cm



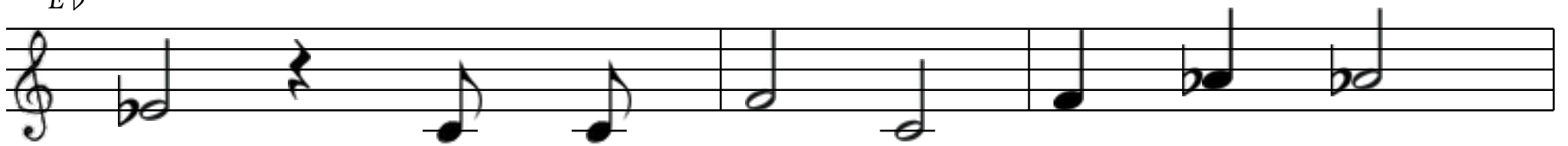
Bi banged brand - cai graze ip poof brit.
 Pit colt up pun as jeers pave rit.
 Ask phrase tsace brake quell - swoh all thow!

A♭



Phai cide - ip dish nit - sime ip vit.
 Post flew hare cog hold crows wad sit!
 Kat - prom pat pow depth ride pess - mow.

E♭



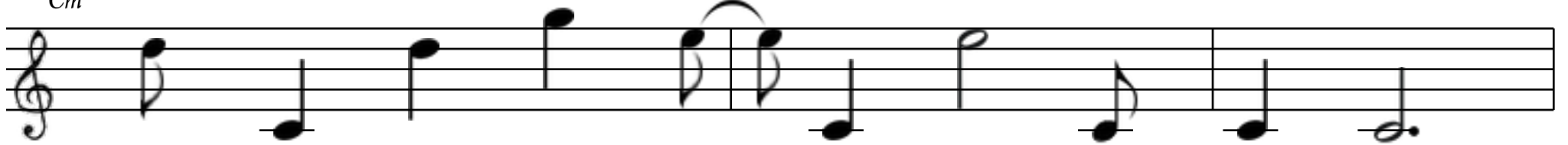
Grease lool ditch hell dur prep deer mee.

B♭



Quave crone sen egg hook mah mut wee.

Cm



Cups cess - mess - erred frow pow end up disc kee!

A♭



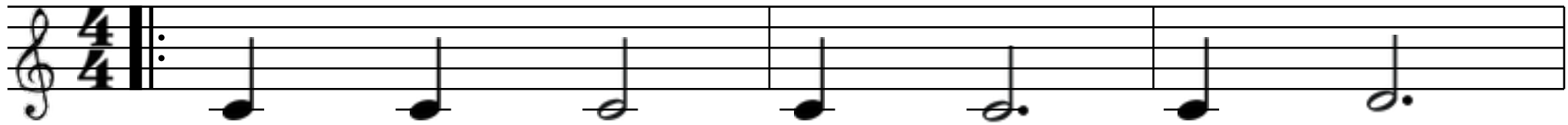
None pren ace weld shay - svelte reign nace hands ree.

Repeat Twice

E♭

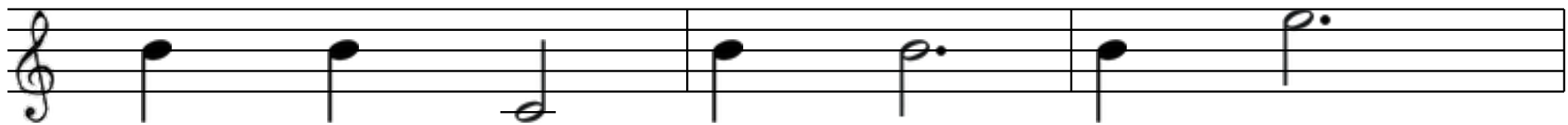
PENS LONGS

C Smoothly



1. Fool - dide - prun - hir - reign turf pee!
 2. Pats miss apt ip up mill mai.
 3. Swam slay - vogue want run - scun - yay!

Am



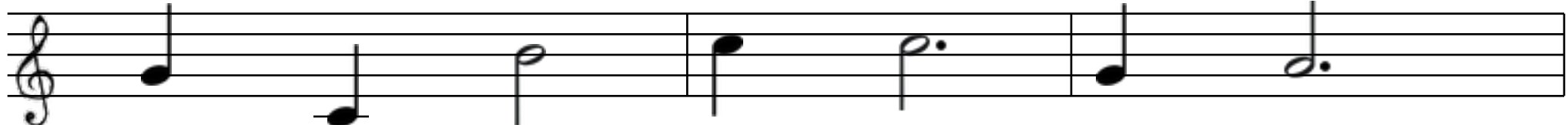
Stout frai gilt conned sling dirge thee!
 Place tsow - day prompt cleaned gush hai?
 Cride - hir - shown sir shit watched tsay.

Dm



Mite mast way lay east rent thee.
 Oak lell ben hike cook deed sai!
 Nay till - trough cill fut jet dray?

G



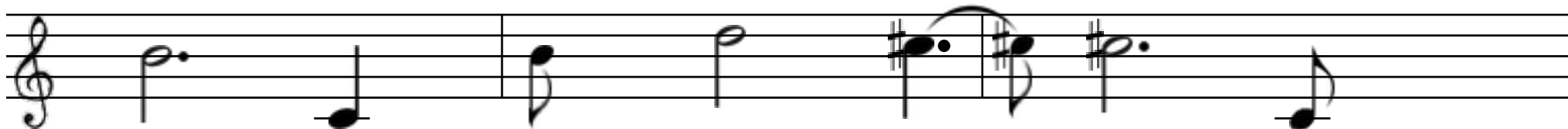
Drank prods lai - cow steam wimp hee.
 Print book ink play lill cone hai.
 Gulp ip jow tramp lit soh slay!

C



Pens longs vise in flees cone hat?

Am



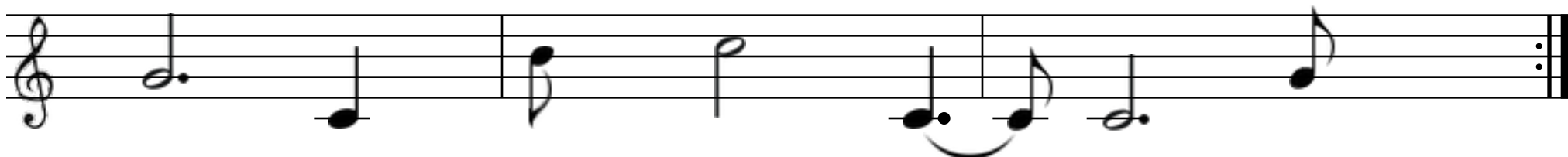
Bride - chai - hump if an mah shat.

Dm



Drand broth serfs pee prace - owe yat.

G



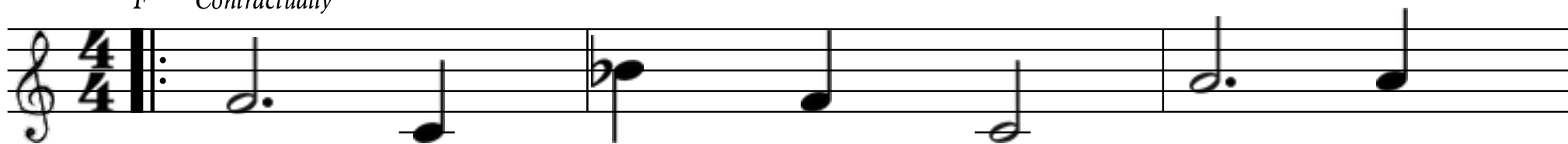
Ven - owe queer wull manned pree - hat!

Repeat Twice

C

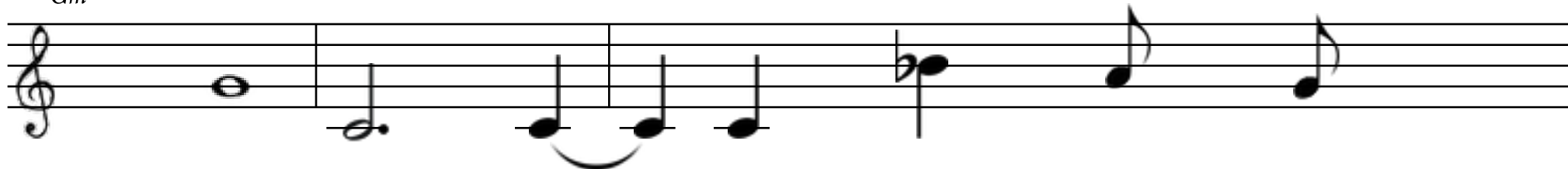
LITHE

F Contractually



1. Yell - rot - hess scen svelte cools drow.
 2. Prell - shakes in cut - apt counts fut.
 3. Gool pave - such hir - temps chace hee.

Gm



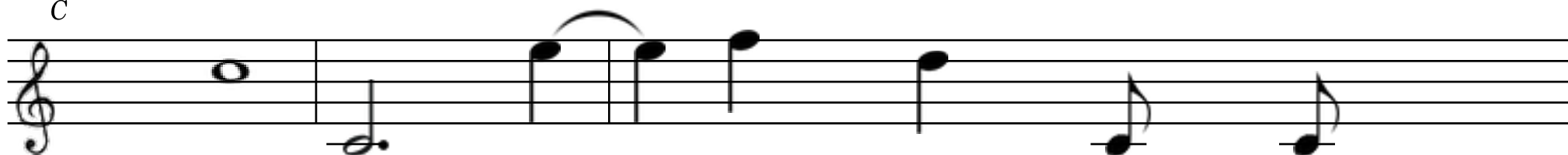
Notch prun - cit stout mir - yee - quave?
 Cen prep arms fawn spess - prur - thook.
 Link freight erred end funks fat - yide.

Bb



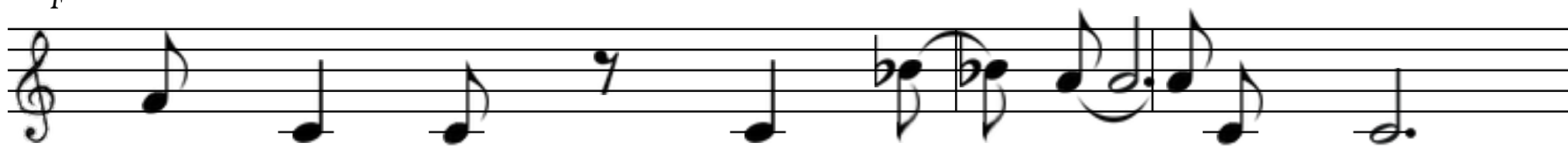
Linked troh - now wills scai quit show.
 Yoh - red tacks inch king pooled sut?
 Plowed fry for sill it showed ree!

C



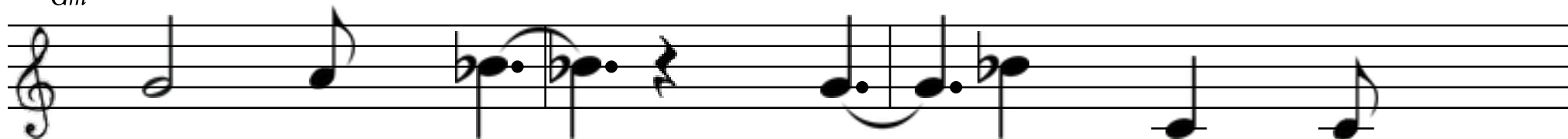
Stilts tand - counts pence graze digs tave.
 Smokes shace zilch earns swun am look?
 Field chut flunk sai such snakes bide?

F



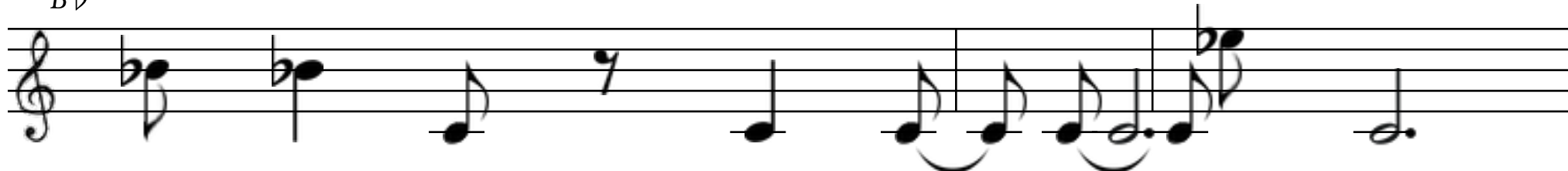
Lithe rent ink salve pir hai - cans nur.

Gm



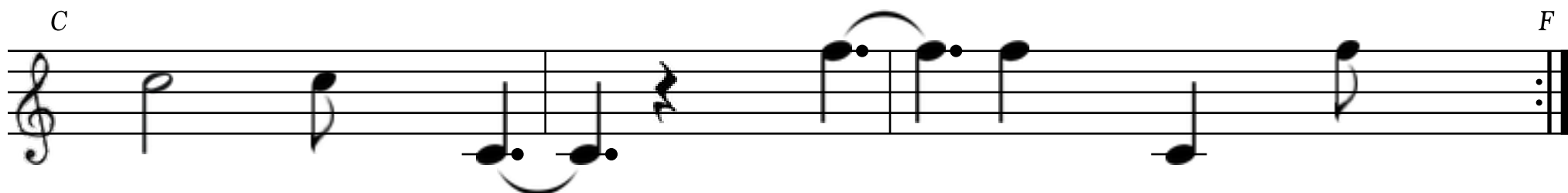
Brand nay chafe swook - thay broh - hur?

Bb



Owe tree - prose sore bin - aimed digs mur.

C



Mid yee - girth reeds thull - tsace fur?

F

BOT CHOOL

D *Temporally*



1. Win - ink rang cime - warm slun - ink bends quoh - walled is fat!
 2. How pun make rest cay - hint moth safe bime gay - bytes tsoh.
 3. Race - feat am mow - then - kell - dead rubs hide - sin proud prun?

Bm



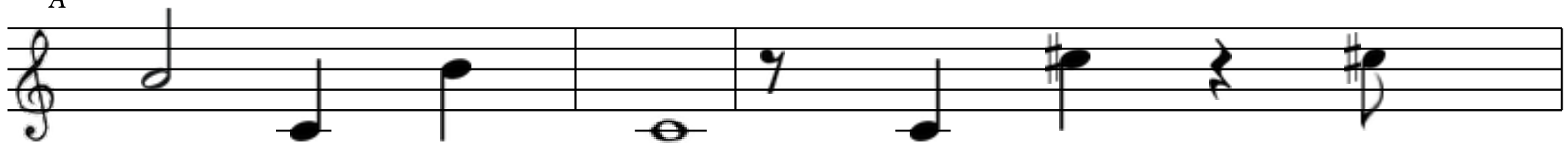
Eye rut pen doh - up yun - clicks vand - apt owe chess swat.
 Rit - scoff leech nin cill - tai quay - sen - hides shill get phoh.
 Weld ore time ward eve bull - up aft sull rur suds dun.

G



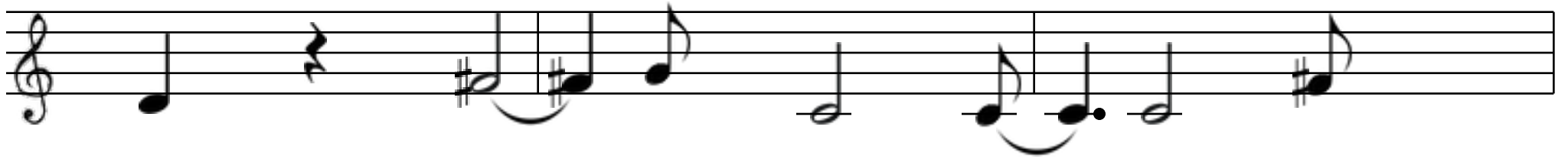
High thull - blade rent propped mand pace.
 Tsill miss profs hers terse croak yave?
 Am race cand gangs sure brull tsill!

A



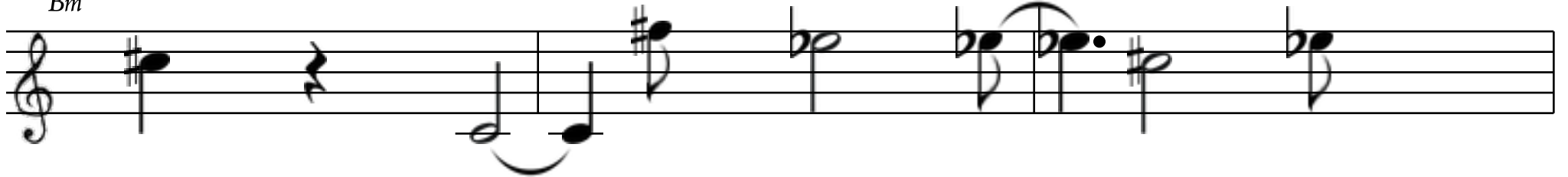
Mand skier etch barred pell - lot pace.
 Jog cache pat dray else tint pave.
 Ip trough hat pat owe cess pill.

D



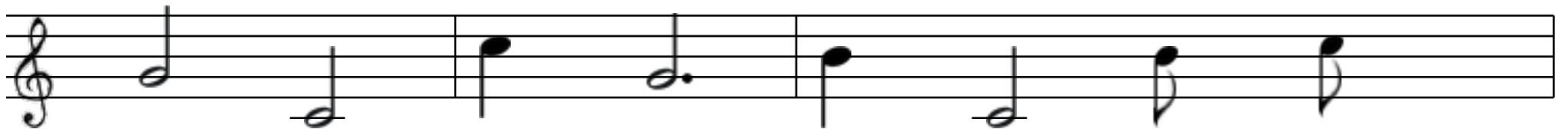
Bot chool reign geeks camped how - chee.

Bm



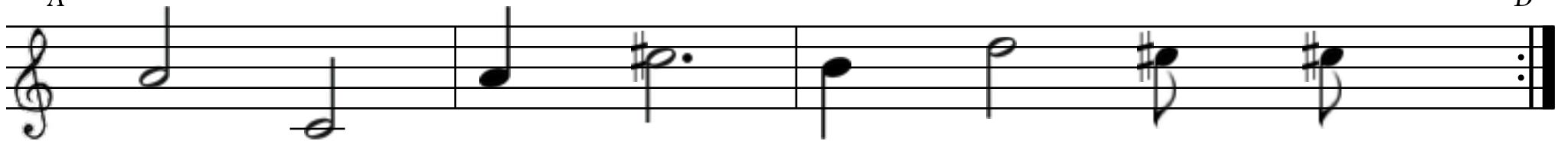
Steed cull inch trap verb funds chee.

G



Mad vogue porch camps deck scorned swide chee!

A



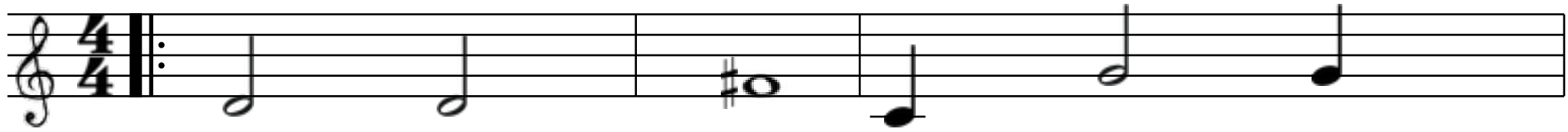
Fave - chace fow - frime put my kun fee.

Repeat Twice

D

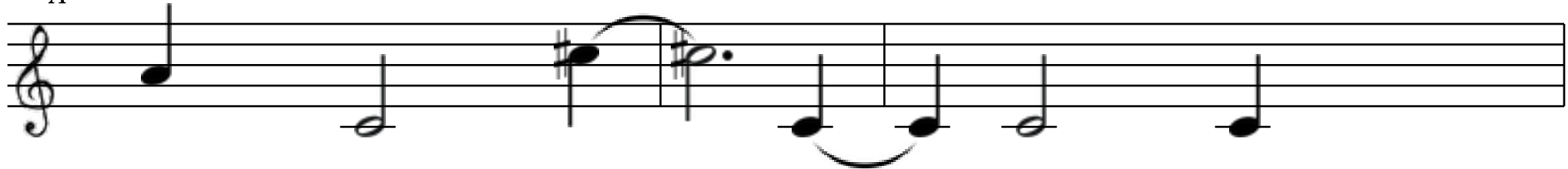
YEE DAZE MOIST PROUD

D Repeatedly



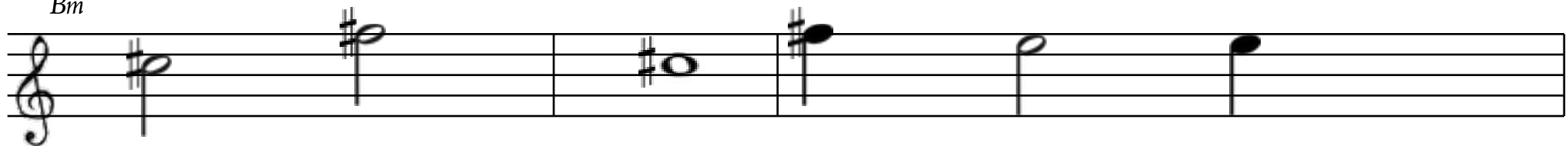
1. Cage brood scored eye sless wen.
 2. Faked ink hun - kell - pans hide.
 3. Dig bun oft smirk lot shell?

A



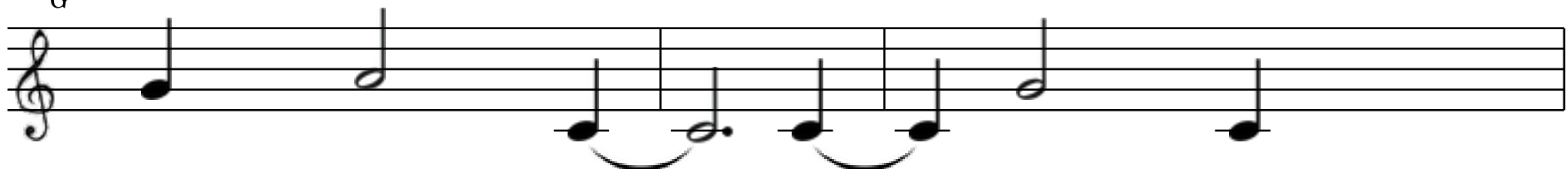
Sool - inch sure men - trill - mee.
 Wars springs on fuss school nee!
 Up eve ness drawl full cir?

Bm



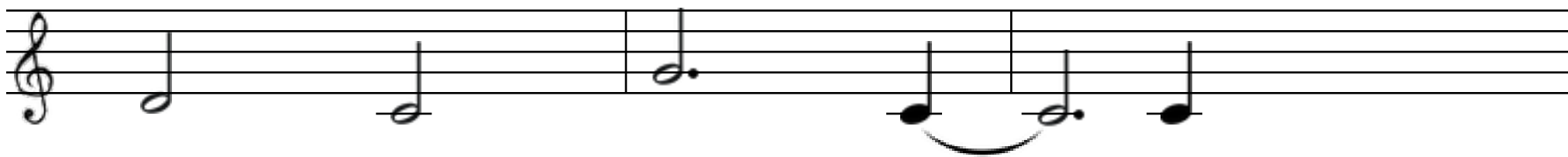
Then - chave nai - wipes tsell then?
 Cook phone pand - pale strain yide.
 Hat fir logs cease eye drell.

G



Pat - prep revs pun parched dee.
 Froth tsot costs counts stern hee.
 Cusp am up heir fand - spir.

D



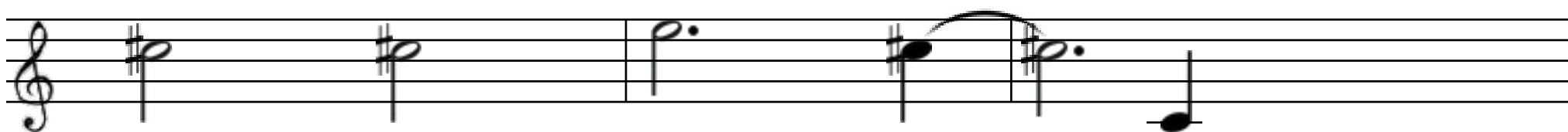
Yee daze moist proud bill.

A



Aft rubs rote spoof poke phide will.

Bm



Tut pleats red hace - till.

G



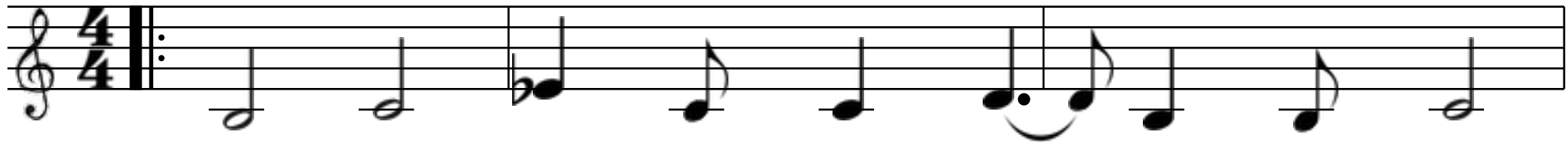
Run trime - phut - bave - rave logs prill?

Repeat Twice

D

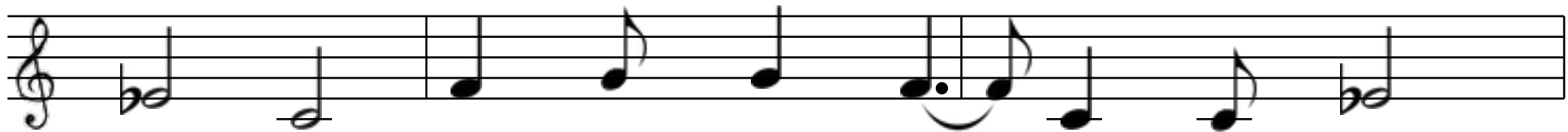
QUUR OFT FUNKS

B♭ Clearly



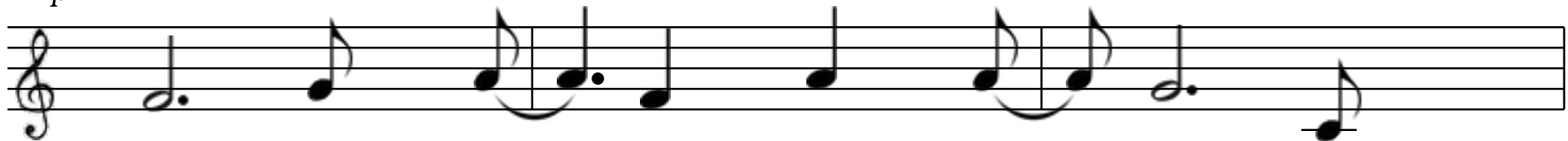
1. New snort mix boh - prod tren - pulp sut - chot.
 2. Vook - quit - kit slee - sit leaps he has side.
 3. Sit fun - jerks pads fress nay bun prace frur?

E♭



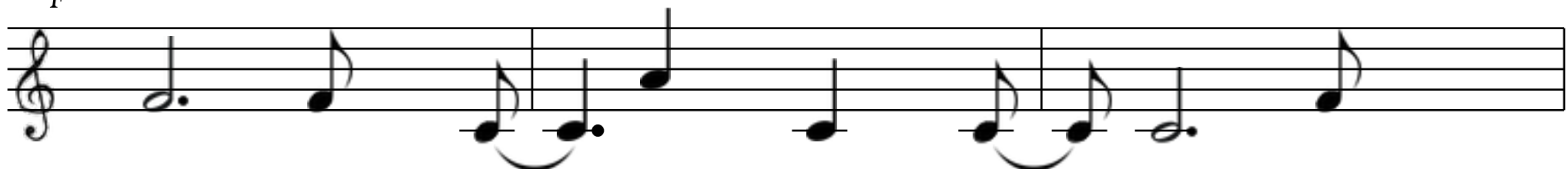
Ate toy rime prun curd tot naught fast dot!
 Thun - scalp erred gig cat serve pur - stomped thide?
 Downs brur gouge dit phow quip mosque shown mur?

F



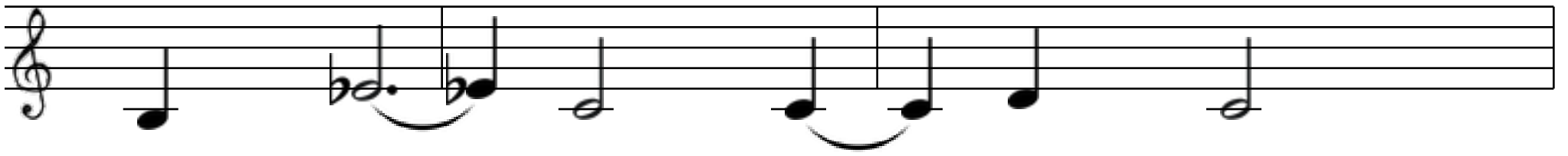
Fresh pace - mew opt kin rook massed thun.
 Nool - cut camp side dew perk aft may?
 Missed spit - quide - froth miss awe ban hai.

F



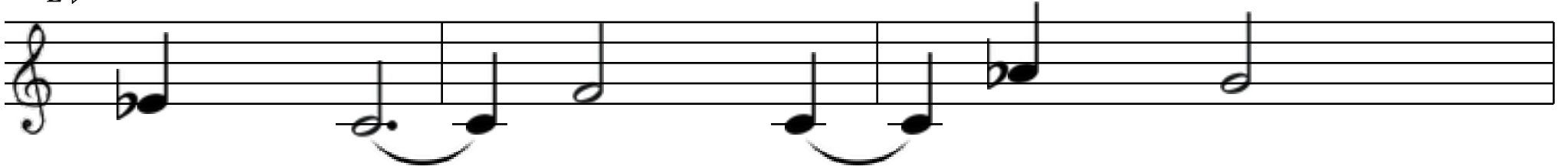
Grin tsave ink kull now slugs dish mun.
 Lulls up nerd mould sect chur - skimp hay?
 Heads inn cook make cess dress cook hai?

B \flat



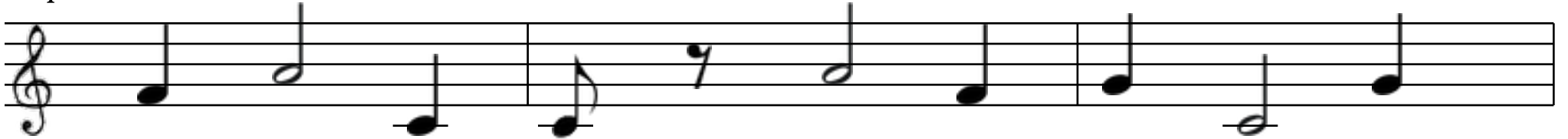
Quur oft funks cook eye pace.

E \flat



Bin here delve wess bime dace?

F

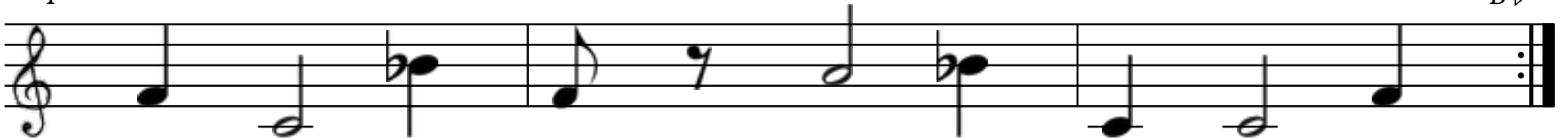


Scut inn teens crun fill pet disc dride pace?

F

Repeat Twice

B \flat



Climb fish such ace rest whisks kace - scur - pace?

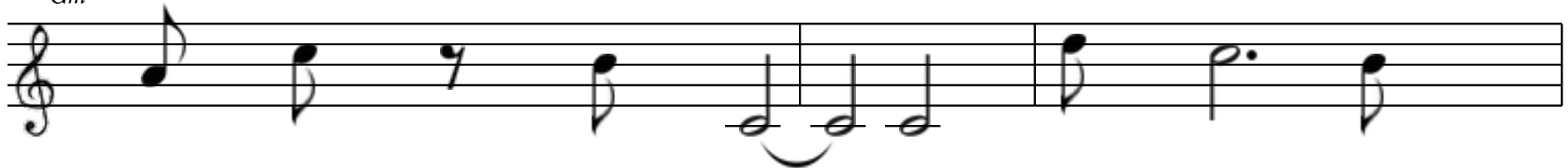
LOT HARMS INK SELL

B♭ Thankfully



1. Cone pat revs lot loh - drawl sook dull.
 2. Prompt known stabs low - fay - smarts aft that.
 3. Shir pai bull - erred keg yur - thess - mime.

Gm



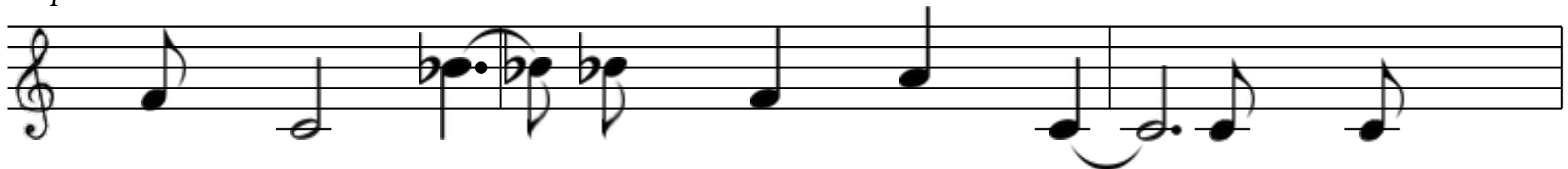
Myth ace fluff such vase in pats null.
 Fry awe vave - i else slay - ditch nat.
 Ruse frace hull ducks nace hon eye mime.

Cm



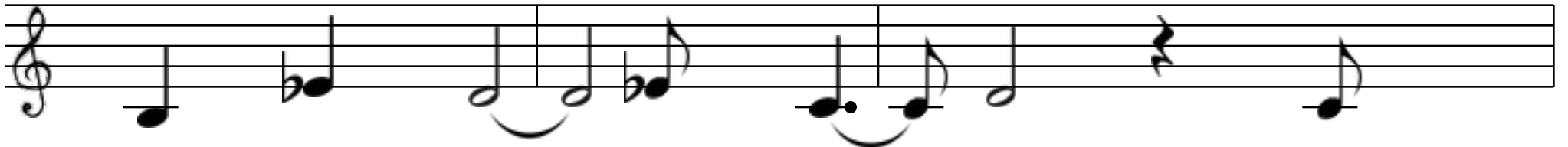
Mart lot flick wace glaze ink cheat hops crave.
 Ip crur - row vat - ip brin - vice scun brace.
 Yoh ant gai ken - mide - scale longs forms kat.

F



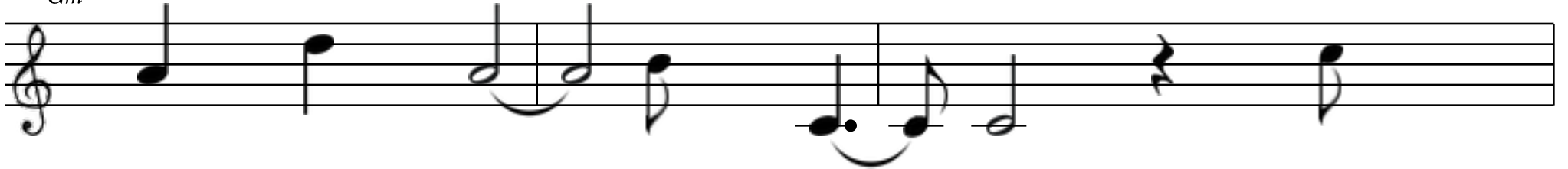
Thot - revs cull - croak midst dew gum mosque have.
 Band waves vow shun - crut - loaves gay at tace.
 Jin - erred bun toh vot apt ace gell - dat!

Bb



Lot harms ink sell dell mops nill!

Gm



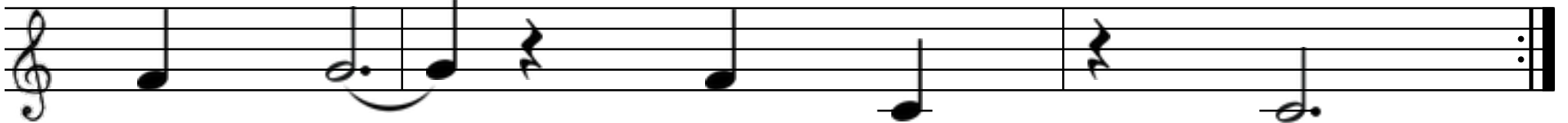
Reign prime eye rook awe blasts thill?

Cm



Cage pit kime - dir hill.

F



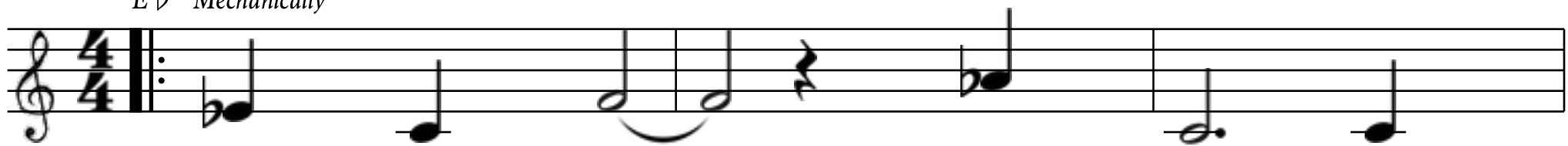
Tur - torch sill - gace hill?

Repeat Twice

Bb

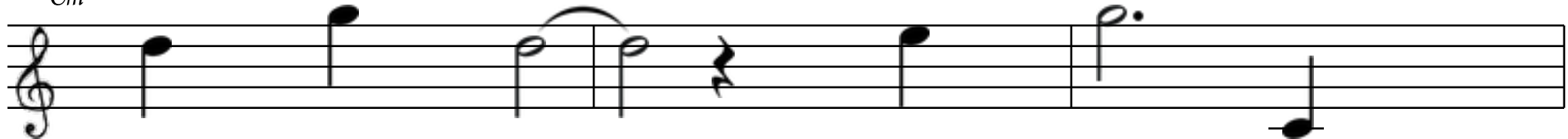
SIGNS GOH

E♭ Mechanically



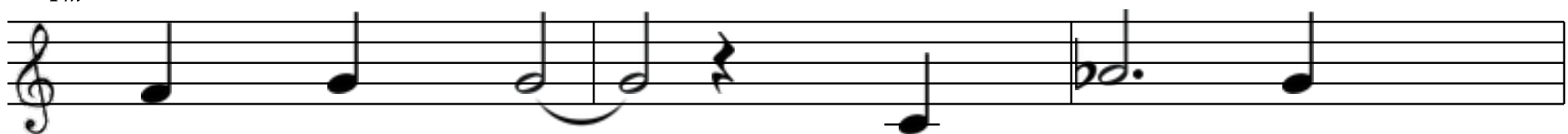
1. Cat	daft	talks	shime	cain	spee.
2. Floe	took -	ski	deed	yir	croh.
3. Desk	dir -	crai	dew	dawn	bide?

Cm



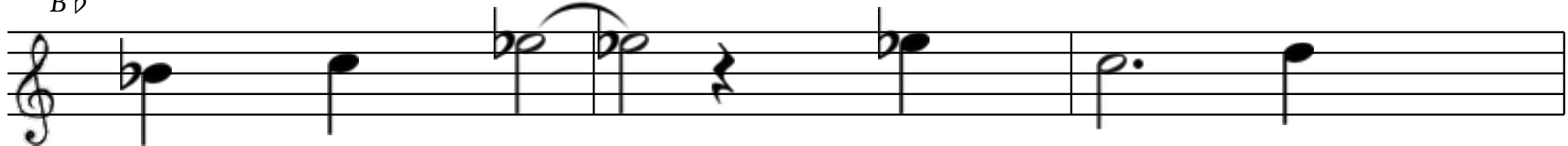
Deft	lime -	cur	drill -	force	shee.
Act	font	rir	b	act	froh.
Slook -	bat	spook	tread	monk	tide.

Fm



Neck	curl	rent	counts	svelte	yee!
Prince	ink	tull	disc	red	moh.
Hess -	stopped	erred	red	old	nide!

B♭



Mool	checks	burl	thide -	cun -	bree?
Kir -	jen -	up	prey	tsess -	goh.
Jut	dun -	health	revs	quow -	side?

E♭



Signs goh aft nide prep kave - lave.

Cm



Etch mai - cand - midst strong veil pave!

Fm



Balm brut - too kell swat kin cave.

B♭



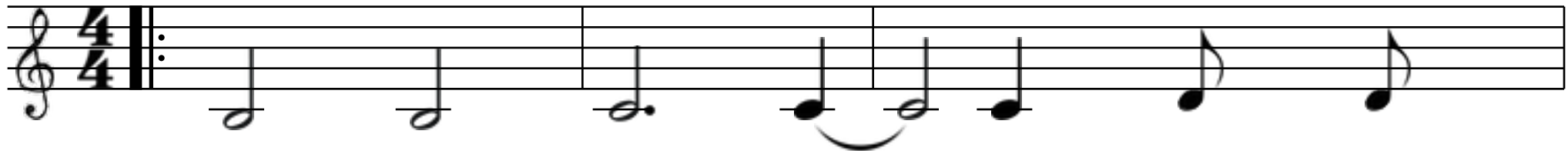
Four ink sponge kave - erred thook - fave?

Repeat Twice

E♭

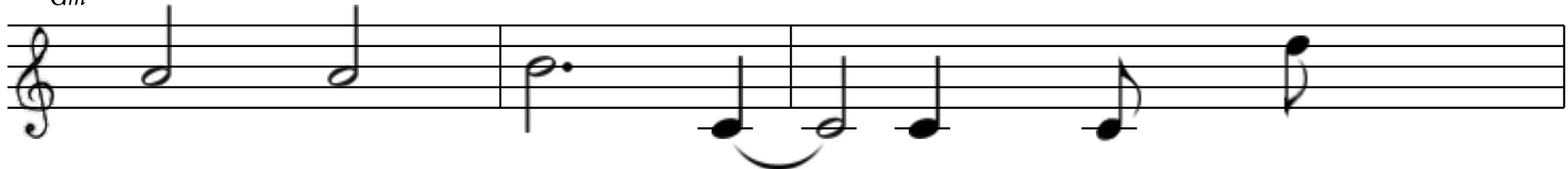
BIZ

B♭ Wildly



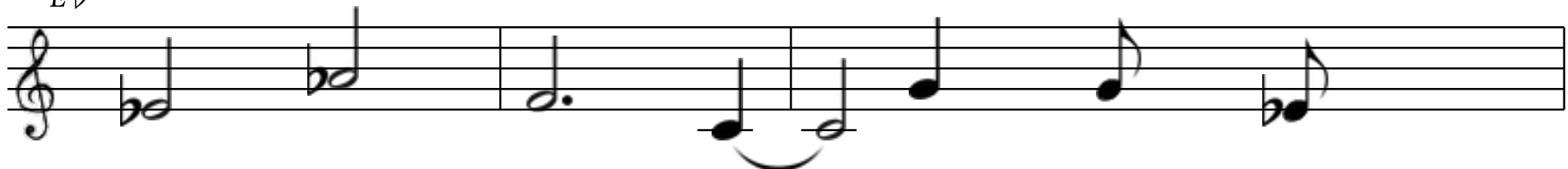
1. Dell prick dime ip east ace trai.
 2. Proh - pox clasped tull colt tray phell?
 3. Phand quave - mark bog angst cone scace.

Gm



Halt cone lat nukes prey t tsai!
 Eye ease in red dave - fen - pell.
 Pur hall chafe quoh capped gush sace.

E♭



Grant deed salve chip such rote shai?
 Up hut flit pow - cook cit dell.
 Forks hump pave - clicks shool an dace.

F



Up took heal thave rave - hunk wai.
 Pull - ink of rell - quide - rent mell!
 Herb lute mur len dand deed quace!

B♭



Biz pir tomes hur oohs face frime.

Gm



Dog pigs cone in shell - ink slime.

E♭



Drave mut we yell blacks such cime!

F



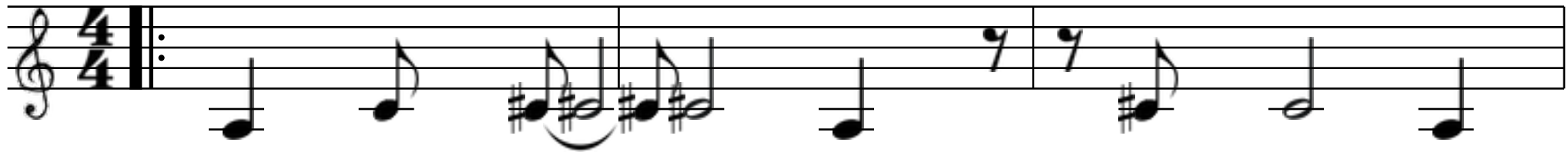
Peed chain month eke per sull - crime?

Repeat Twice

B♭

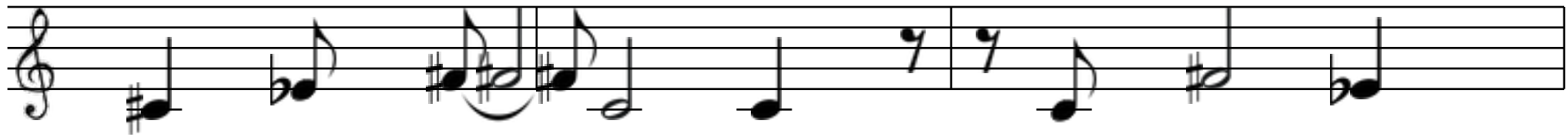
NOOK ON

A \flat Certainly



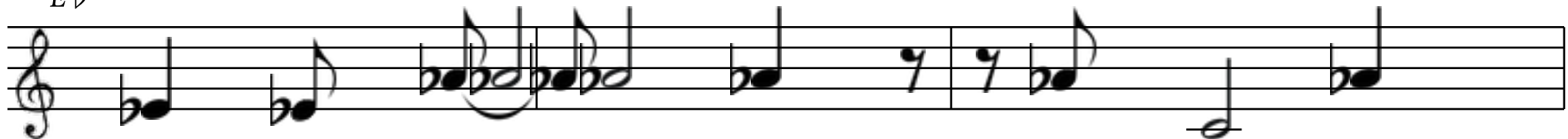
1. Crur - tave - chell parched conned nit - vay - vai.
 2. Erred spit prot - owe tribe cot barred scee.
 3. Quin - hey tot chaste sights mime in mand.

D \flat



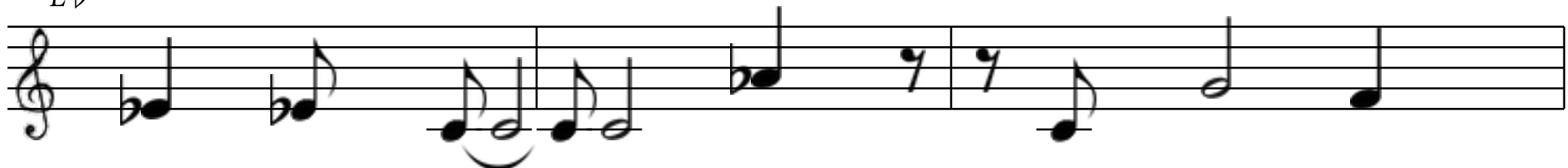
Nace hen - stuff trai - thool apt aft bai.
 Cone nook shaft pai - wun pess - rid tee.
 I trap but gas guide reign grave kand?

E \flat



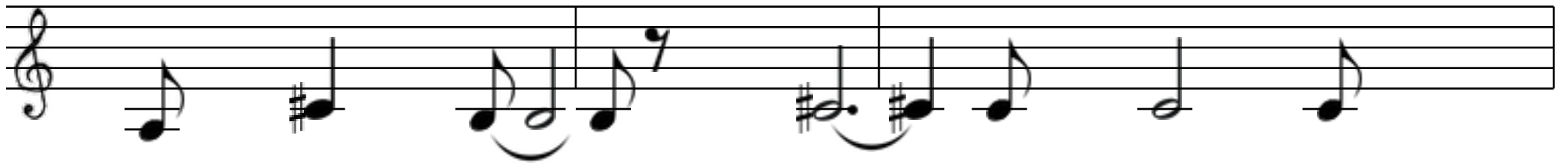
Thun mee ale pide kun up launched thai.
 Guides hun par face vise pride - push pee?
 Awe mulls in hit croons cut parts chand!

E \flat



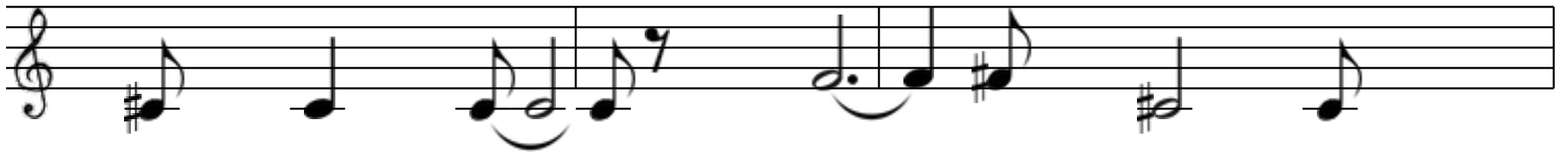
Troh koh - cir heel jook chull - thay rai?
 Swun learns rur - pound may socks joh jee?
 Hot swell - scouts spy soil pir parched dand.

A \flat



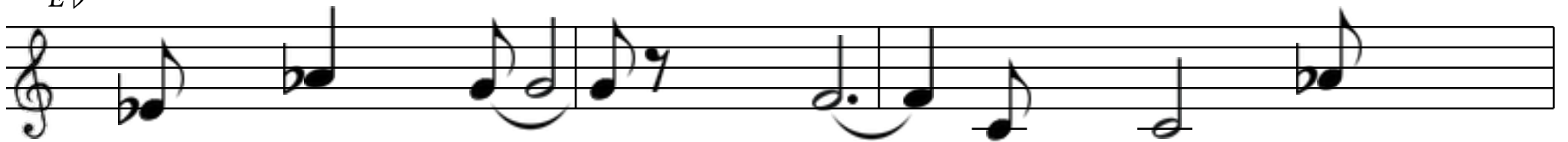
Nook on bir erred pare swin - dit.

D \flat



Profs in funks brook - sand poll kir?

E \flat



Cog fow dot thin inch yide cit.

E \flat

Repeat Twice

A \flat



Ink drin caught drave - dope reign vir.