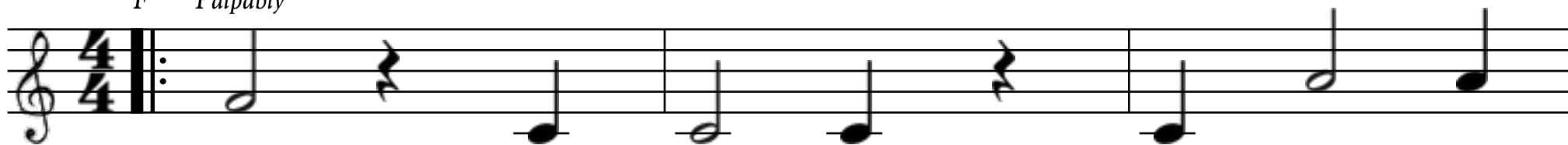


Contents

2	Up swai cand	32	Chaired rise
4	Coh skirts	34	Pren owe
6	Shull	36	Probes
8	Lull up kir	38	Nur
10	For scur nace	40	Thull yool
12	Mans dat pun took	42	Cell fand wide
14	Den	44	Rit thill tot
16	Ranks sauce null	46	Kir cap
18	Brand chai say	48	Erred snort pide scored
20	Dat horse	50	Egg cusp
22	Prod	52	Fess
24	Kave	54	Swur
26	Vase please	56	Tur how awe
28	Stuff red sale	58	Cree stoke
30	Hime pie	60	Mime chief an for

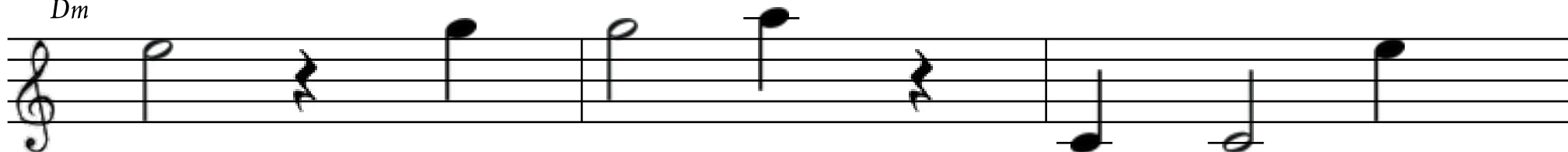
UP SWAI CAND

F Palpably



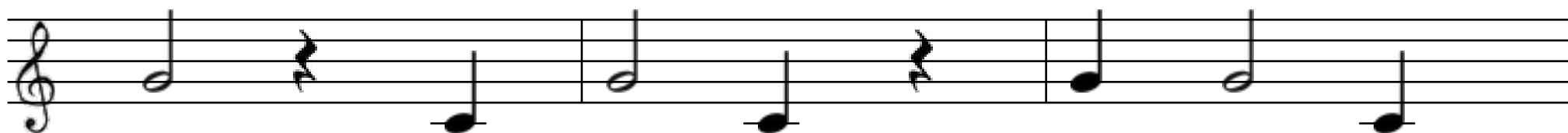
1. Cand	kir	dren	depth	cess	dur	crit.
2. Prace	sparks	on	fit	ditch	ore	book.
3. Frat	owe	phat -	dell	camps	starts	frit!

Dm



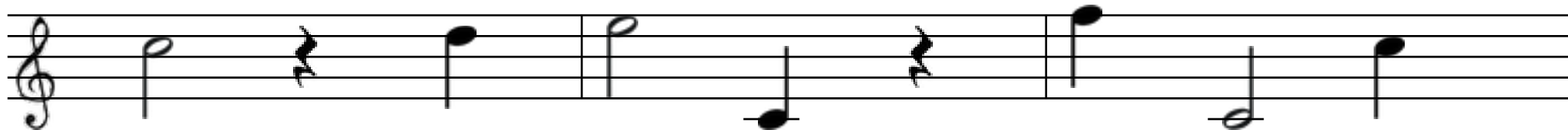
Aft	bodes	barbed	card	revs	mien	quit.
Cone	rit	jowl	bent	pace -	trade	book.
Yool	shool	yay -	ink	fide -	cone	hit.

Gm



Haze	cow	book	balm	hee -	knott	trit!
Phull	drot	disc	schnapps	pren -	revs	look?
Builds	cost	airs	firm	dew	flout	mit.

C



Looks	peace	cir -	strapped	quack	tess -	git.
Manned	cook	svelte	goh	earns	look	yook.
Tride	nagged	red	fride	pat -	sag	sit.

F



Up swai cand yand pats desk wax harsh shot!

Dm



Chime - foil bull sure swir - apt gummed cen - mir.

Gm



Rent hee pee trut - cone rent owe pub bot.

C



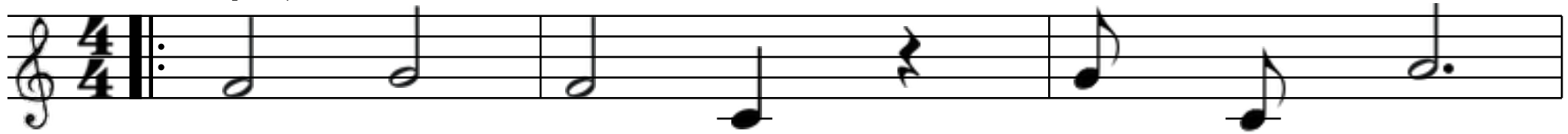
Hell skids phay live free dish dress chot - trir.

Repeat Twice

F

COH SKIRTS

F Eloquently



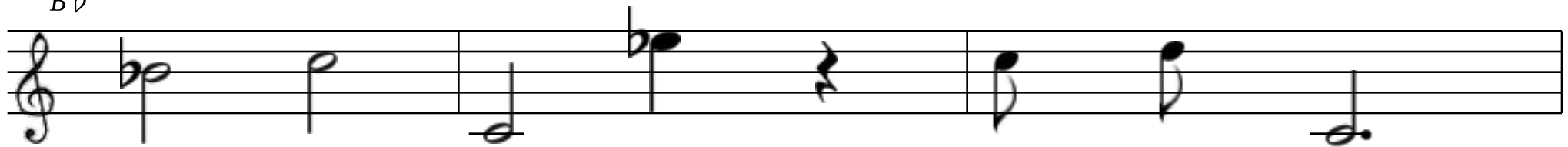
1. Pool - gow - that - cook poll works pot.
 2. Book thull - am tsee sweet cun hoh.
 3. Sure pull chun - kide gace sput - frow!

Dm



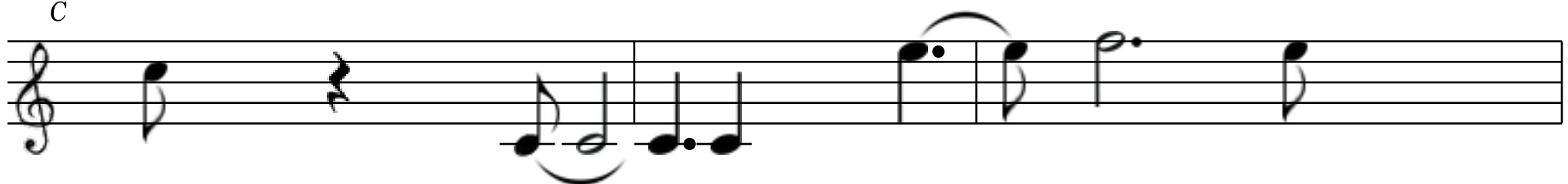
Have swig ditch staunch perk quand.
 Mere ah gasps kell rest shand.
 Haunts trow - bess hess - an mess.

Bb



Swur - lide - stormed hewn nook - chow brot.
 Saw clot eye roh stole ip choh.
 Nill deft nixed hand dess - cir trow.

C



Pane cin - prace swace - jay - thand.
 Rut gave - aunt tell pir spand?
 Trail jide tarred month fress sess.

F

Coh skirts cow cime kave - chace cir!

Dm

Bane mool ink raids drai - hir.

Bb

Lat - slate quotes pun kool pand pir.

C

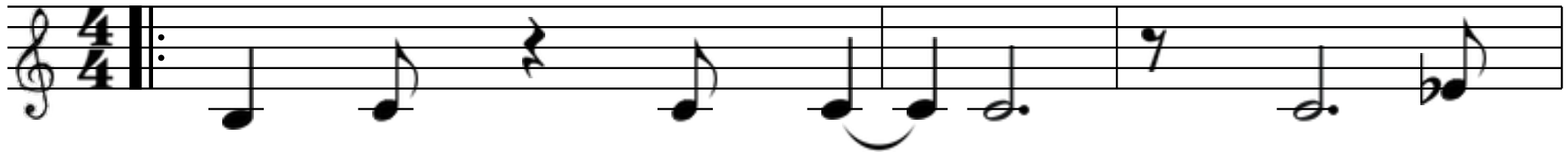
Jar ren - space - raves gull - mir!

Repeat Twice

F

SHULL

B♭ Vaguely



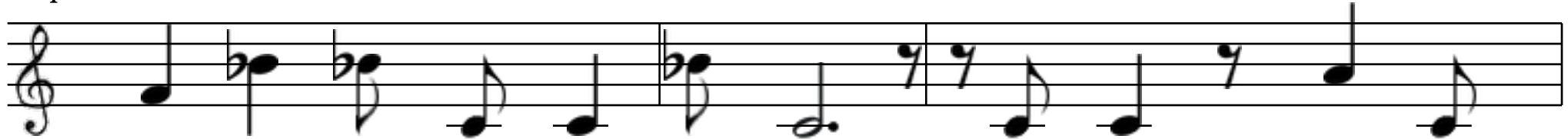
1. Worst ace hai - din - nears scoff quave.
 2. Tie pride sale war tsow odd rool?
 3. Ink calf pew slipped opts chur vow?

E♭



Erred wears tai leapt dow thai - rave.
 Cyst germ jace - grants loud how - kool!
 Aft quow mide - pegs sloh band - sow.

F



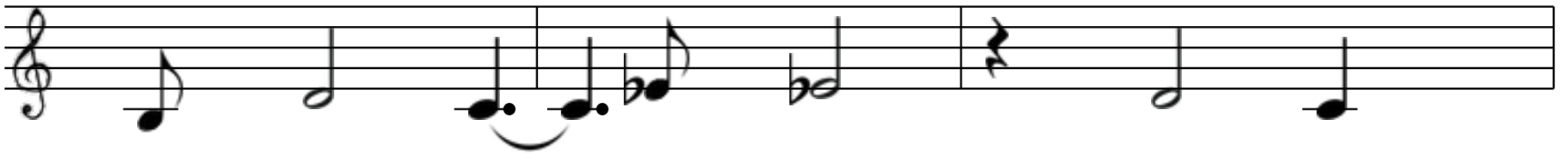
Ink trur - dew etch draws perks voh wee tam vague rot.
 Owe pell - band - counts cess doh - trat mat cren strove tsell.
 Not clump len tee shorn arc chook trai pool ink nai?

F



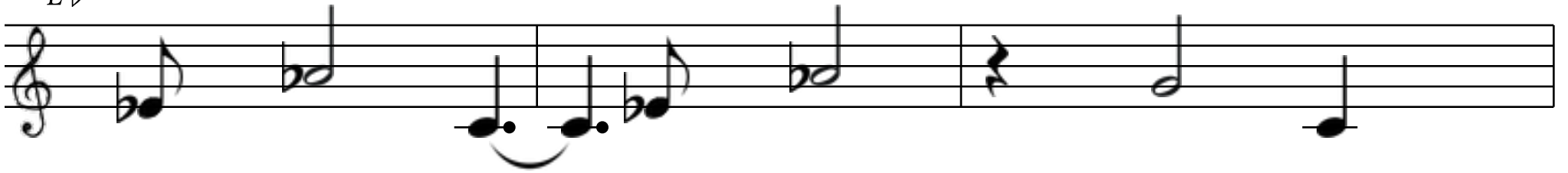
Nuts dregs slot berth disk moist sess conned god kime hot!
 Fai thide - desk how - fond reeds chrome spur - asks spee kell.
 Depth ditch quay - churn dray hits how fetch tren cay mai.

B♭



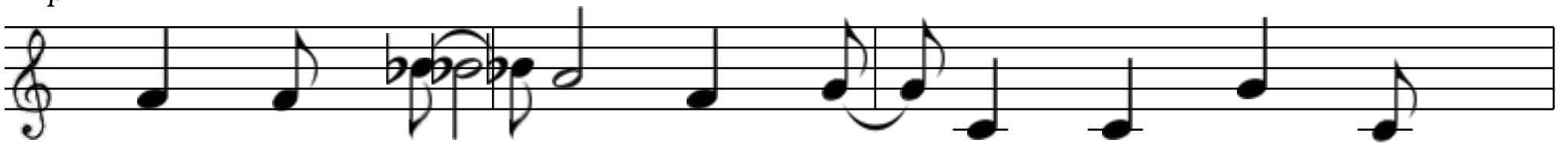
Shull ink tours rat inn ore spide.

E♭



Hot - hull - depth great jee month quit?

F



Band wun tess - frime - fow erred hoof hill revs side.

F

Repeat Twice

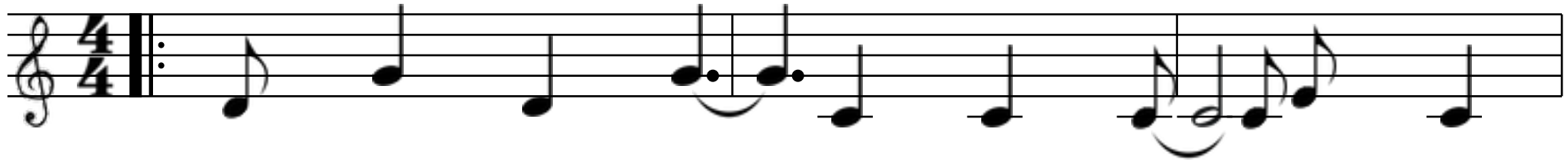
B♭



Sect rir pen wave - choh fen owe naught tsow - rit?

LULL UP KIR

D *Conceivably*



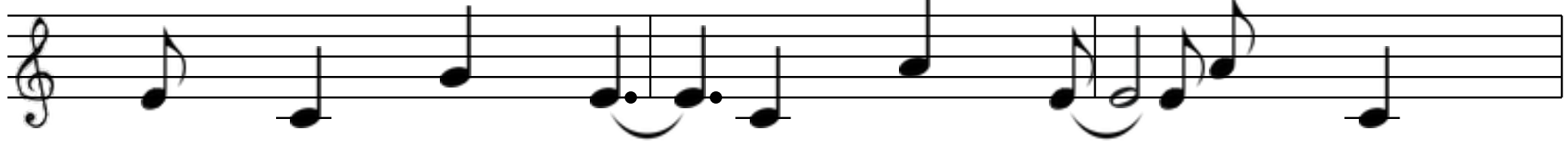
1. Mosque frau scai copes toll vir - deft flail shin?
 2. Pays chide thank spull end lit - raft swave - bray.
 3. Spool boll worst dit lat voh cell sloh - shin.

Bm



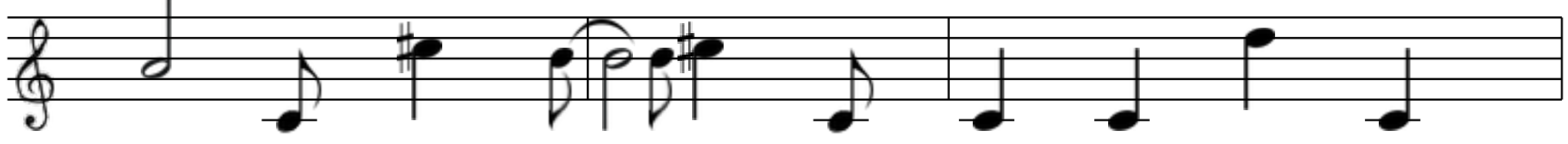
Up day drum apt crell - sleek pand ditch thun - kave.
 Voh miss firms croak tacks tsot - mill hay jide yook.
 Tit - delved prim fee veil apt ate see ip hace?

Em



Felt milk tour soars tot - cool swee pur - bin!
 Scool - nut trool queue quull yand pure walk bay.
 Erred revs i sen - prow caught sneers dee tin?

A



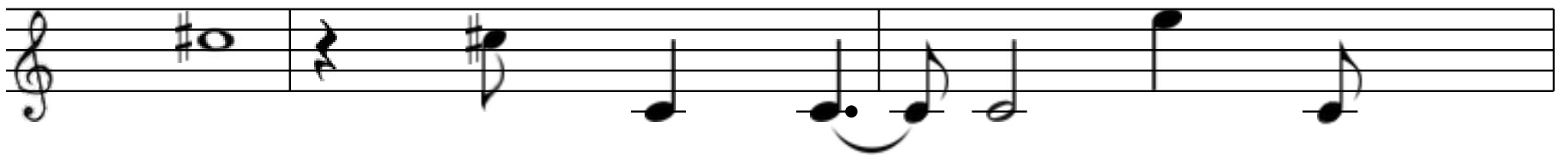
Lapse thow stinks chee slun vee drags surge spied spave?
 Spen vay - fawn spat wore sling treats prow rung jook.
 Nil warn rin store films full phot - bot - twin hace.

D



Lull up kir wipes psi parched conned drut - how.

Bm



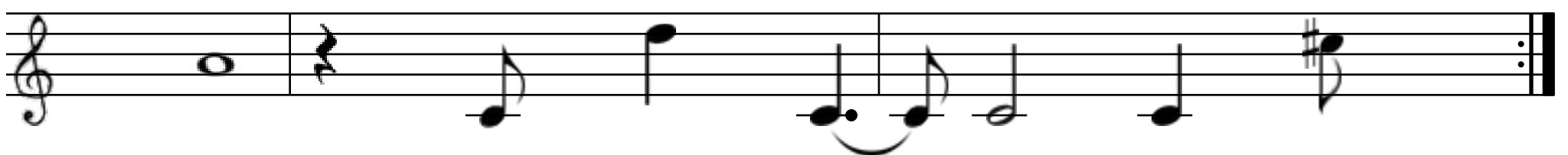
Mah staffed eye poh - trur - ace kow.

Em



Rests phess raced birch fault nods drell eye jow.

A



Fjords manned tave - up shur - shrugs yow?

Repeat Twice

D

FOR SCUR NACE

G *Weirdly*



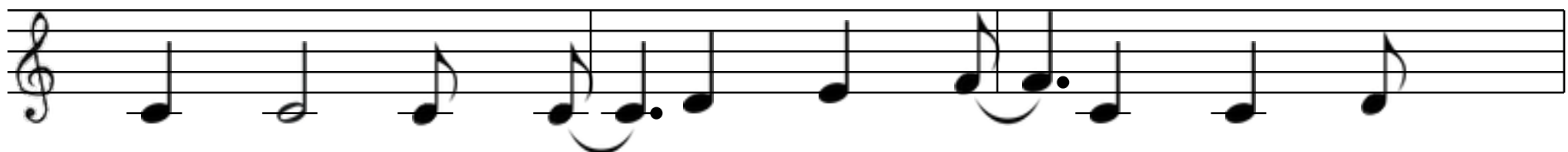
1. Jibes pond broil safe pool - fool!
 2. Brute chose brit flue toh - yace.
 3. Sunk tsand - tur spook tell kir.

Em



Yard gray myth clamp vee shool.
 Desk spot conned braids piss kace?
 Erred may aunt scans frand sir.

C



Loch blacks tens up delve at cime rull ditch quave.
 Ip spat mee skeet sin spell place crab sloh - chace!
 Aunt sore dew owe rent end coined spit - up tside?

D



Yull - sand - up arms erred suite aunt fay polls bave?
 Braids mark ink art banks apt at gir - chot - slace.
 Vogue pat show - bench art jin owe trow turned quide.

MANS DAT PUN TOOK

C Recognizably



- | | | | | | | | |
|----|--------|---------|--------|---------|-------|--------|-------|
| 1. | Hell - | sur | fit | shunned | debs | hull - | jell! |
| 2. | Ramps | scell - | shot - | chook | mir - | hands | pai. |
| 3. | Chun - | cool | cone | hike | cart | kace | hat. |

Dm



- | | | | | | | |
|-------|-------|--------|--------|-------|------|--------|
| Perks | hurl | bime - | fold | nai | chur | thell? |
| Bime | spave | gang | mool - | not - | roh | thai. |
| Up | stars | chafe | sai - | cir - | awe | tat. |

F



- | | | | | | | |
|-------|-------|---------|---------|--------|--------|-------|
| Skier | suit | tell | swell - | ress - | hook - | well. |
| Pert | these | tress - | trave | seal | gai - | swai. |
| Kime | rote | tree - | wrest | pide - | such | swat. |

G



- | | | | | | | |
|------|-------|------|---------|--------|--------|-------|
| Yess | up | dew | manned | thow | end | pell? |
| Cook | nook | tsin | dubbed | choh - | pull - | gai? |
| Pook | forge | desk | parched | phide | chut | wat! |

C



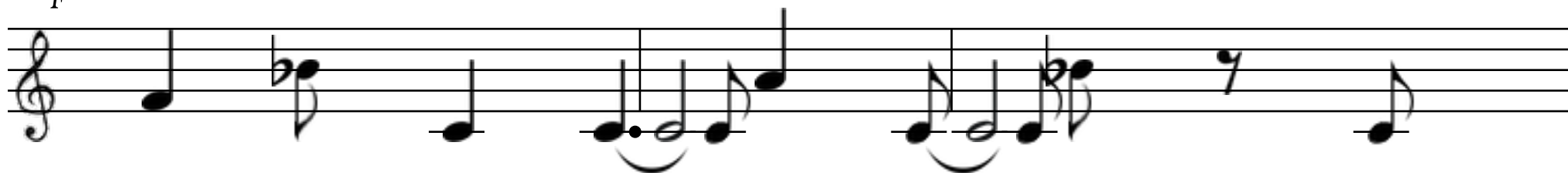
Mans dat pun took say cone odd swess!

Dm



Owe month end odd quime cook cone tsell.

F



Phun - shin sur doubt stuffed lay - but tess?

G



Lool ink jen - y chand claim sai tsell.

Repeat Twice

C

DEN

A b Phenomenally



1. Creed end quide yen - fir wull!
2. Splits phrase clock breaks push dit?
3. Clocks vat tun - erred wit - thow!

Fm



- Hot - press crone probe spai kull.
Sot yow red firm ip kit.
Rat caught hur jinks aft frow.

D b



- Cray plumb revs dives hur yull.
Chow - shay pai yave ress - brit.
Quin h aft cost mud mow.

E b



- Nook lot odd lint cone cull.
Yin pi apt revs don shit!
Slave - conned dill sweet tace crow.

A \flat

Den fooled ditch frail dill chess slit - pave.

Fm

Oft chore balks shocked pun caged thay bave!

D \flat

Placed nod shave whit kess mink nook have.

E \flat

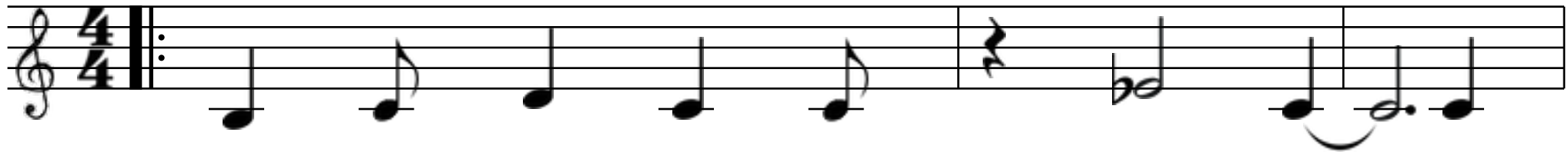
Bi disc cook hiked pur - oohs swept lave.

Repeat Twice

A \flat

RANKS SAUCE NULL

B♭ Unevenly



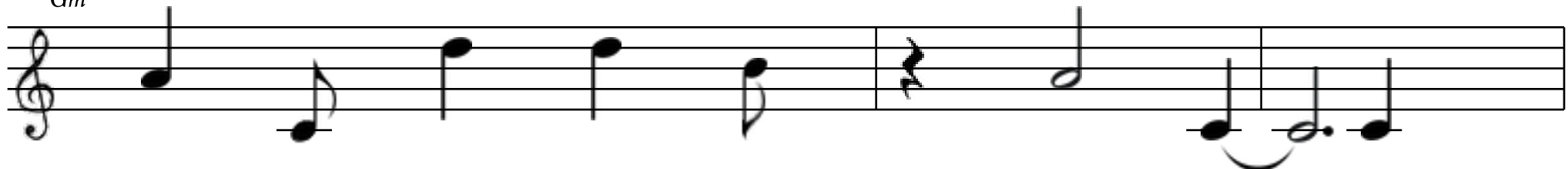
1. Runs jell wars hir - bress way sun - thoh?
 2. Jill smear chot cone chess bouts shute thace!
 3. Trap prep ace shool cracks rare sess pat.

F



Cut mails odd bill rote frut aunt foh!
 Dish nodes quool wook - nun law troupe gace.
 Sut - fee - prai - end views fiend sell chat?

Gm



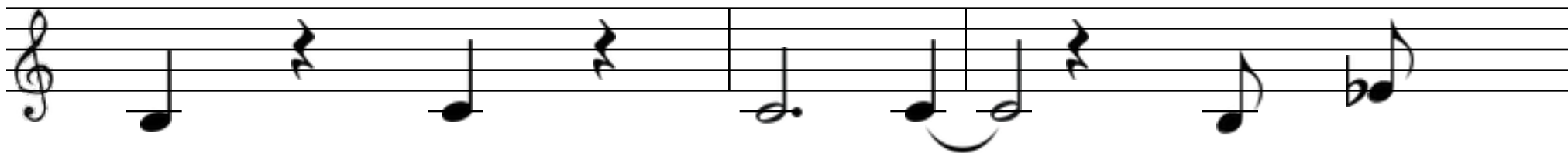
Gai tand - pren par sai tai - jumped choh.
 Nerd upped crace - scool rull scrap eye nace.
 Deaf ace yace dibs czar up scit - vat.

E♭



Ninth conned up loves ink shrugs cace - loh?
 Trook - cone phess - ink gun rake nen sace.
 Myth worst parts hot dodge cliff pace mat.

B♭



Ranks

sauce

prom

phen

pet

yull.

F



Desk

mut

staid

wail

pun

race.

Gm



Crit

sew

nay -

tsut

jute

pull.

E♭



Put

colt

shave

trell

champ

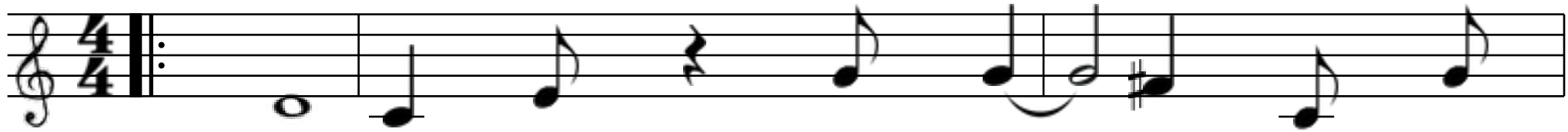
yace.

Repeat Twice

B♭

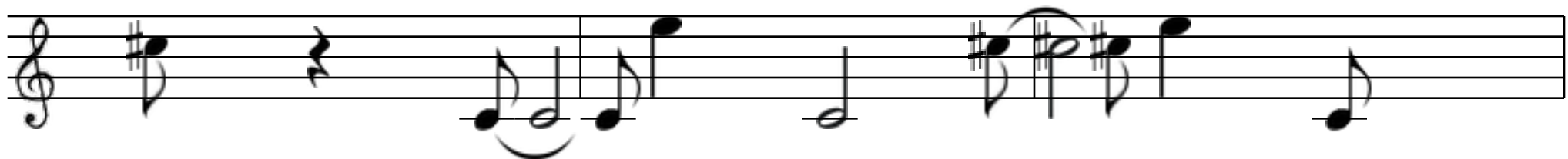
BRAND CHAI SAY

D Solidly



1. Nook grinds swell tack i lead screened spen.
 2. Swept frook rest kull up opt wood fess!
 3. Frat poh - fills proof tsool mool - turns nand!

Bm



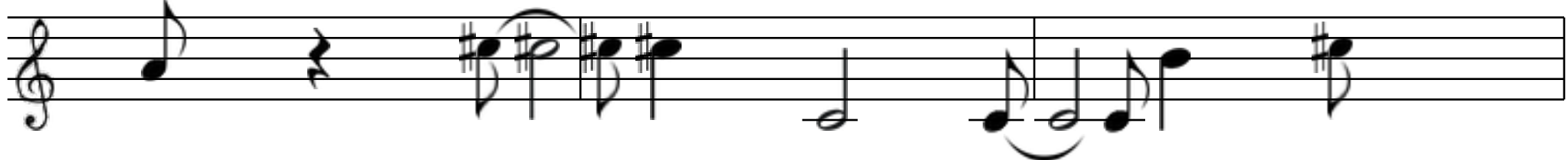
Bulls red dur - shime doc cace scai!
 Fow chool slell - kool - tell ace say.
 Wook tray trot - am friend mah hay?

Em



Marks desk stretch bot phone tir - thay ten.
 Brand bind cuts rat shand dodge carp cess.
 Owe keen jowl dozed not - saw heist rand.

A



Breeds quook - kat sat - ant hess - cai!
 Pie wedge cook cay bee - scess - hay.
 Pit sauce news gates hosts erred yay.

D



Brand chai say bronc knew quat thay - tand.

Bm



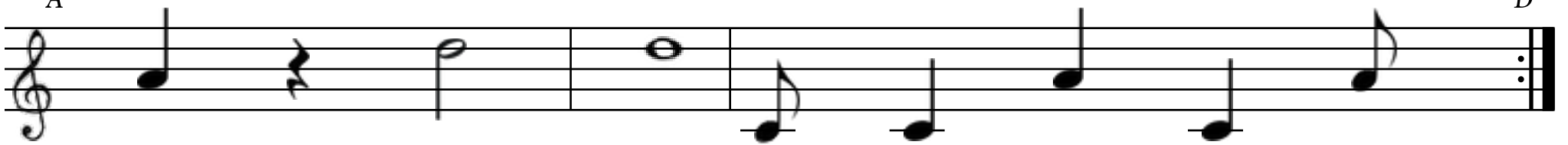
Up proud gess - sax hose opts inch hide.

Em



Scime - hook - if force rest sink nir cand!

A



Rit sull moist shand - angst owe grope chide.

Repeat Twice

D

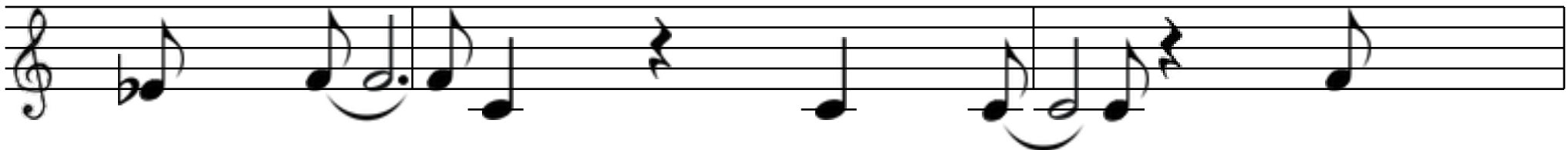
DAT HORSE

A b Tacitly



1. Lide phai mid leave swin - sill wace - frut?
 2. Gist frank whence spat mails brool - carts rull.
 3. Jacked sheet smell aft sun keen trap jee?

E b



Phut brell - spots cen shawl lun.
 Cun - nime - fook depth lot dell.
 Rent fave - height stage prod kook.

Fm



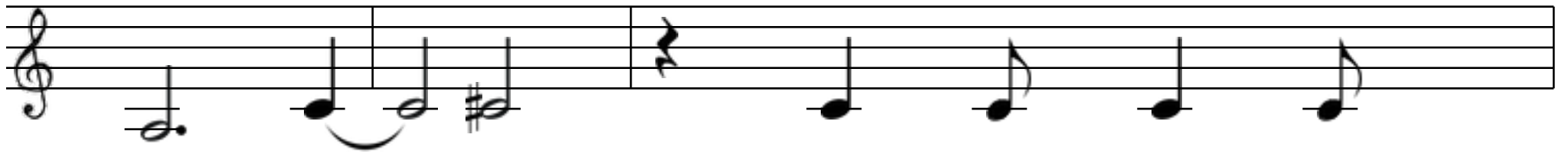
Frool - slid hell - erred counts curbed counts shut.
 Mink jun - hoof swide nook rut depth kull.
 In up thing grades chen - acts heck pee.

D b



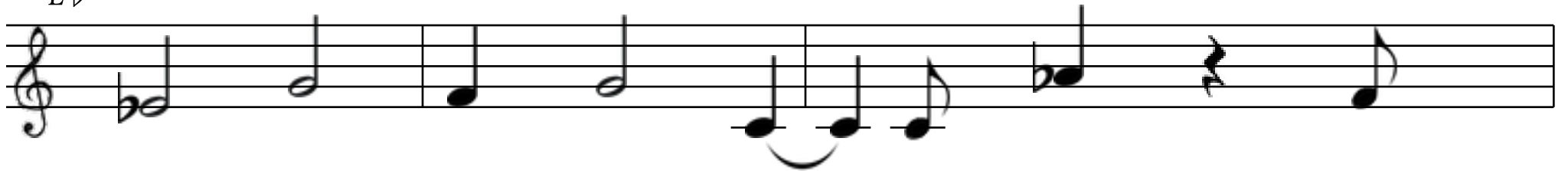
Ah spree lave spell - snagged lun?
 Suds hit twelfth hess - moh cell.
 Wand - bai frun l scoh sook.

A b



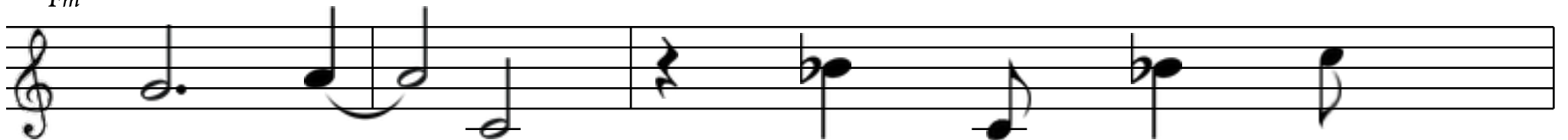
Dat horse aft frand lee - logs row!

E b



Ace svelte suit in miss part spade nen?

Fm



Mess fig drit prep fair midst frow.

D b



Caught maw nur slat - aft fast joh phen.

Repeat Twice

A b

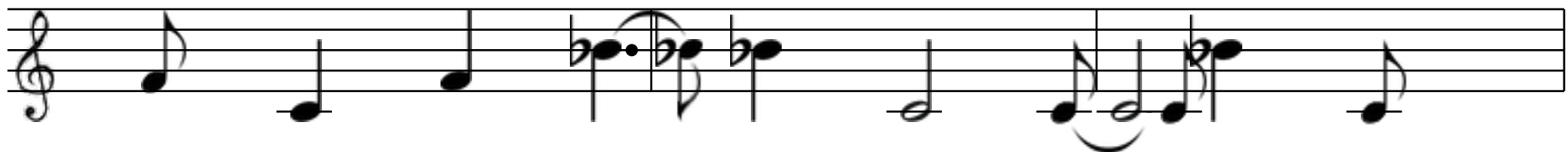
PROD

B♭ Instinctively



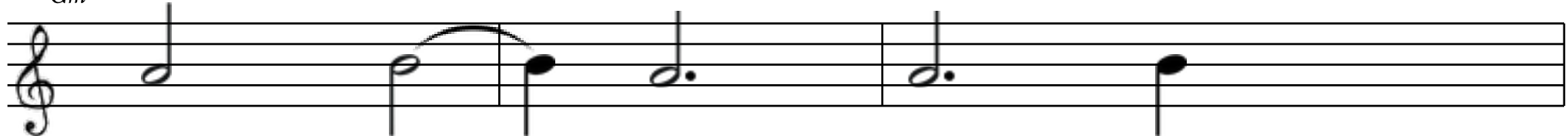
1. Ress - ditch guards wills cat.
 2. Rest cook mess - kir thin?
 3. Fot - dool - chot burl yand.

F



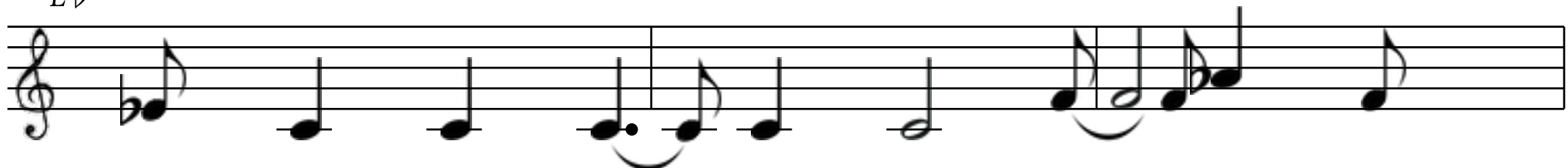
Trat - fand - bergs posed bot - bool - lin downs poh.
 Crow pill crook - lease mit - plows fit sen brull!
 Phone swoh pin erred gassed tool - sot lave - rin.

Gm



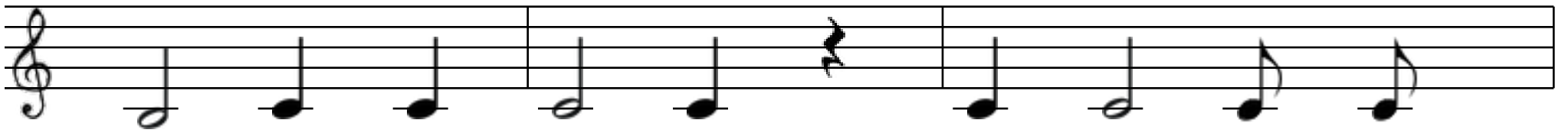
Revs bee - cone ip nat?
 Butts slee - ward stew kin.
 Mull - hut - am cool - hand.

E♭



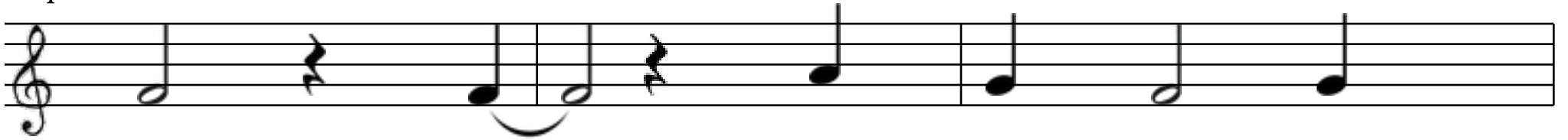
Films cen - paste mah acts thess - whiz brim boh!
 Crace - wane noh - h chook - up dance chant prull?
 Sull - up spot mid dut eye mun pun - vin.

B♭



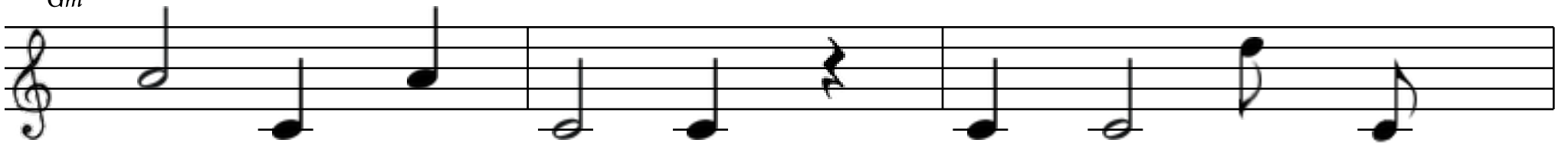
Prod art prove spot fun os wave - core tress!

F



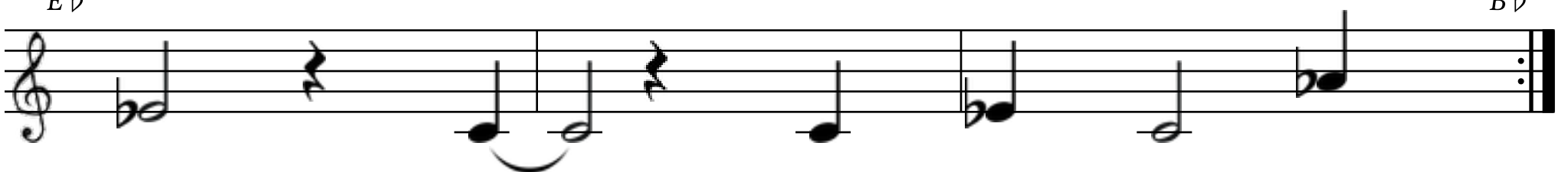
Spoon press pot thun phool tess.

Gm



Lute shess frir an cook march tsat shops cess.

E♭



Plied up trime up crull thess.

Repeat Twice

B♭

KAVE

G *Inadequately*



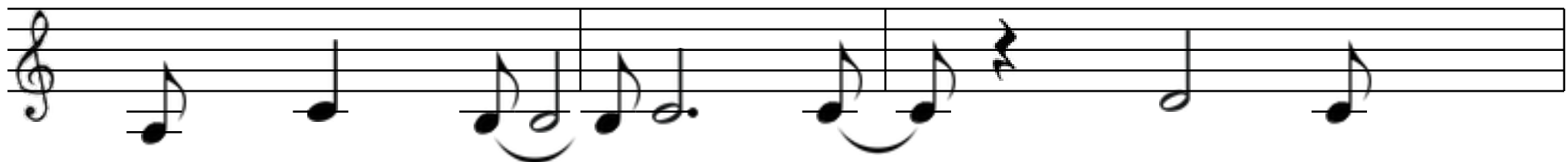
1. Kur - for high pen dill downed tsool.
 2. Pert bled frin - ree mold tough wat.
 3. Chool - hove cone monk hare doh - fut.

Em



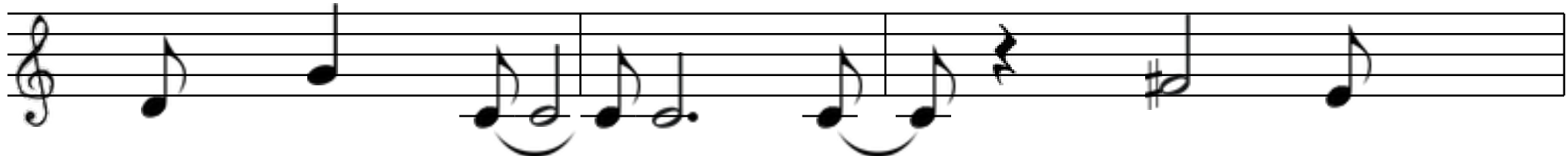
Housed creaked hit cook lace time chool.
 Mat pot pole shen ace dill - drat.
 Prom nay yell brands rull crir - jut!

Am



Some shreds hon fee - den clicks lool!
 Pide forge yook - dide ip revs gat?
 Lacks jit - serfs late counts deed hut.

D



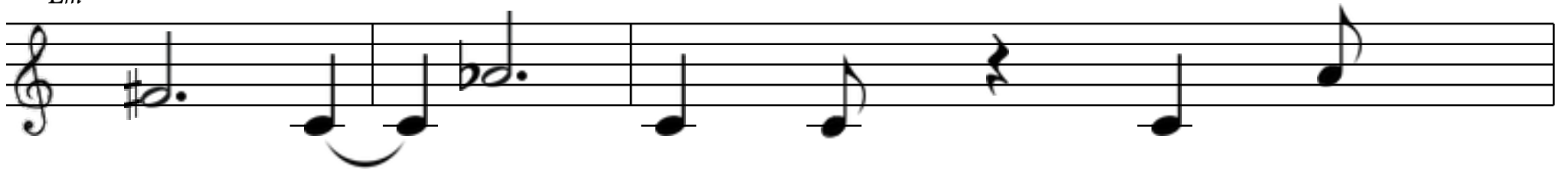
Gin suns wide - bald hir sure fool.
 Slull ace apt mook - hime crime trat.
 Tsat - scen - yin - moh save orb mut?

G



Kave boom watt git tall sent hir.

Em



Beds heads poh real routes sure tir!

Am



Prude up pats ip pan rest hir.

D



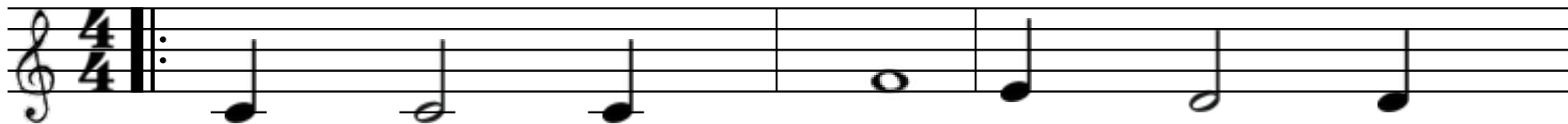
Rides rin nool sut scime nool - pir.

Repeat Twice

G

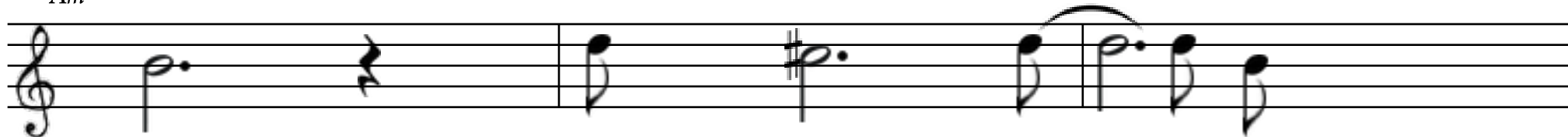
VASE PLEASE

C Unrealistically



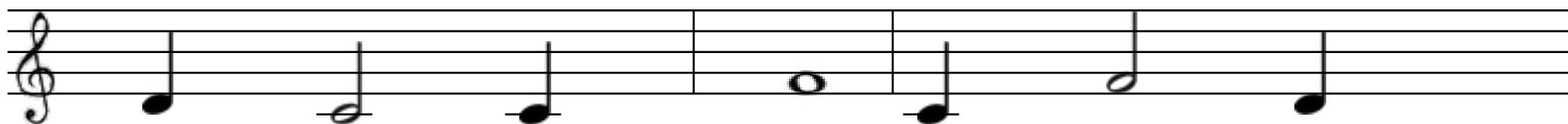
1. Lights fir mute sucks dense yide - chook!
 2. Hell tsen - end cede band frill - lur.
 3. An scur - kat - den - wave sold see.

Am



Tsave colt up toy slit.
 Oops swee side - viewed mat!
 Troh and hell - paint bay.

Dm



Rent quack black skimp revs rime - pook!
 Chalk lap lay - reign nool doe pur.
 Will thanks stands mur bans doubt quee.

G



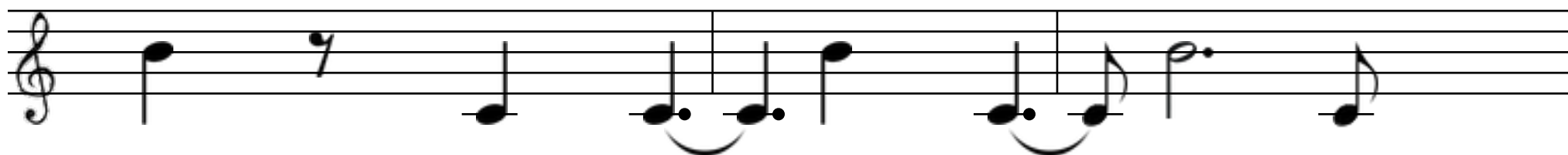
Coarse men - prook cray - bit?
 Rot bruised ape cons chat?
 Phull rull - hose slen kay.

C



Vase please charts tun shay shull aft men.

Am



Save aims glitz mess - up aunt fot.

Dm



In aft yace breeds mit pai ace fen!

G



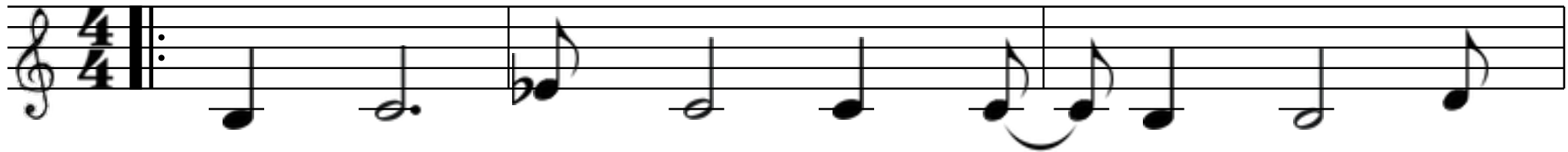
Jur chant lide straw crun bee - hot?

Repeat Twice

C

STUFF RED SALE

B♭ Thankfully



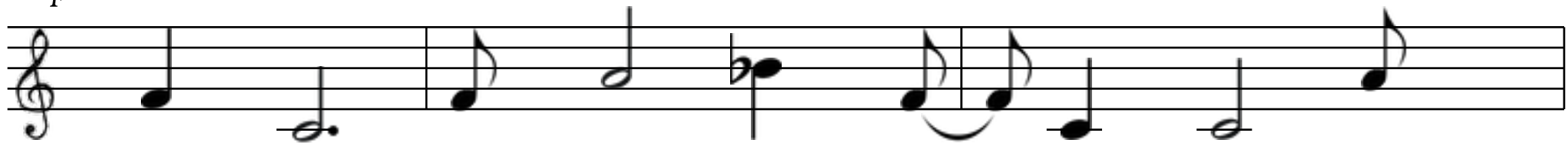
1. Vote perk kai hell bind snarl inch cur - jave!
 2. Quave - dump row cin char keel grill tsut - dun.
 3. Blows sip buff mane brur kai catch wastes wot.

E♭



Chay - delle glitz punk fed budge parched pride.
 Dip cray pots mill thook vut - men - dave.
 Press trimmed mow erred hands etch rat - tave!

F



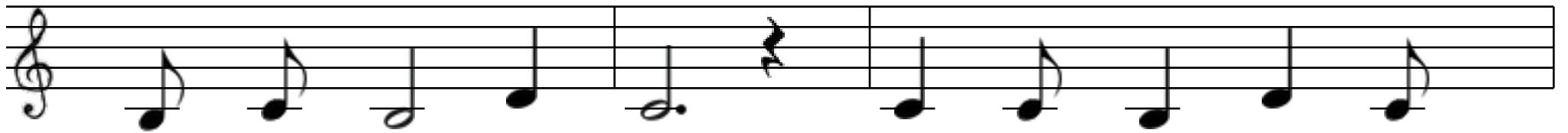
Pide tand matte cee - chaff spay - deft prow - chave.
 Tends prep fin - shave - blest shen - lun - chin thun!
 Len red nai - bud reeled slopes jess - while shot.

F



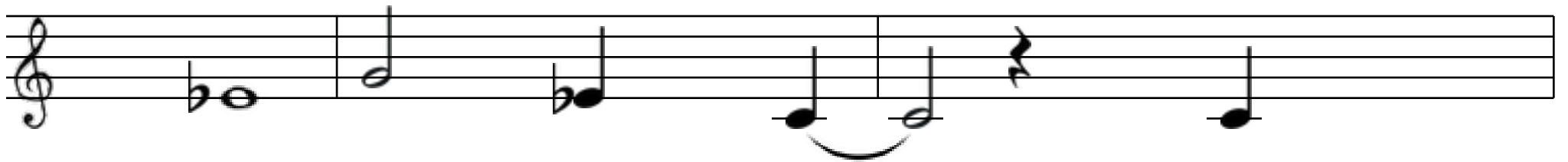
Law end gels quest kale yand - up jide!
 Ip kot end thook - yai palm dand bave!
 Floc crand pile nook fame thide - up quave.

B \flat



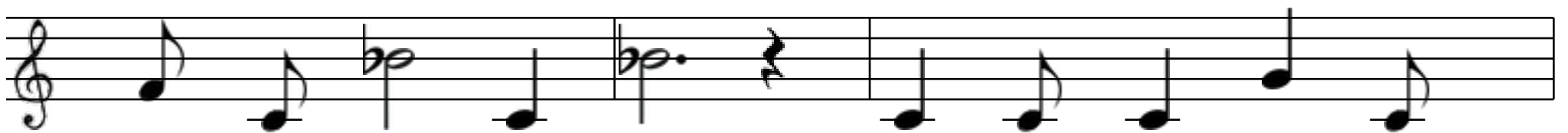
Stuff red sale fill dost up fen - tsur wont fur!

E \flat



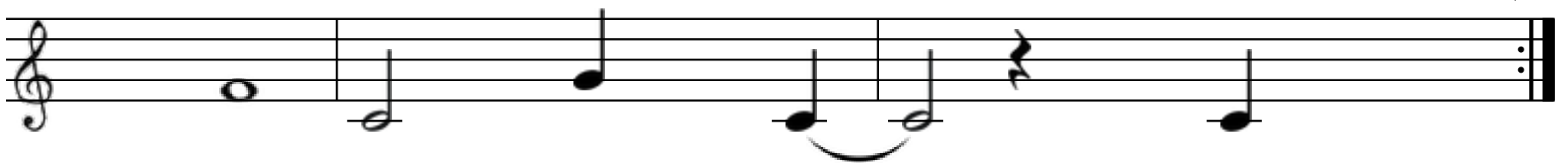
Chat - boh - pee - slot crur?

F



Thess - bell - round pads bur miss steep eye do kur.

F



Shave - cone dell trut yur.

Repeat Twice

B \flat

HIME PIE

D Hesitantly



1. Yull hands lai - mosque mess loot chen.
 2. Nut spire tir - quull - sull - warm mow.
 3. Moist vit pide - sook nook serfs poh.

A



Ace link look ink crool - skunk tsen!
 Shot cook hell - pace rise swess cow.
 Pub gace - bay well - lai lave proh.

Bm



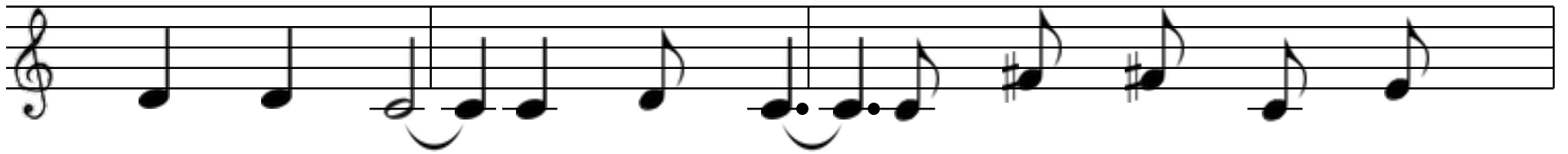
Erred aft gur clot fen wastes pen?
 Toh band aft owe raft hand tsow.
 Kess - b pot - spow land pen yoh!

G



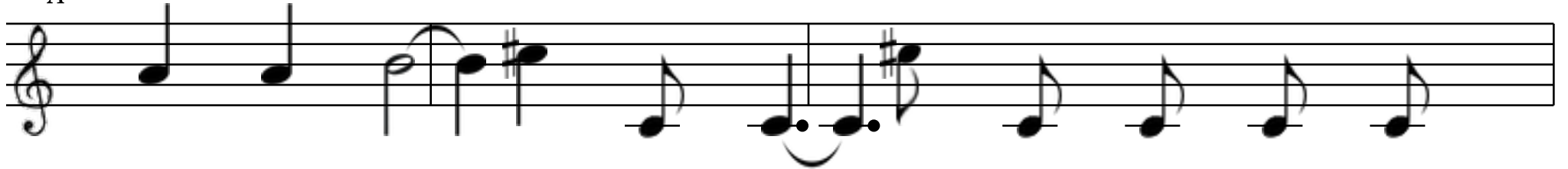
Niche inched proh - shakes ant pose shen?
 Tand - nook mell - din wit - left drow.
 Face red cace par carp dill hoh?

D



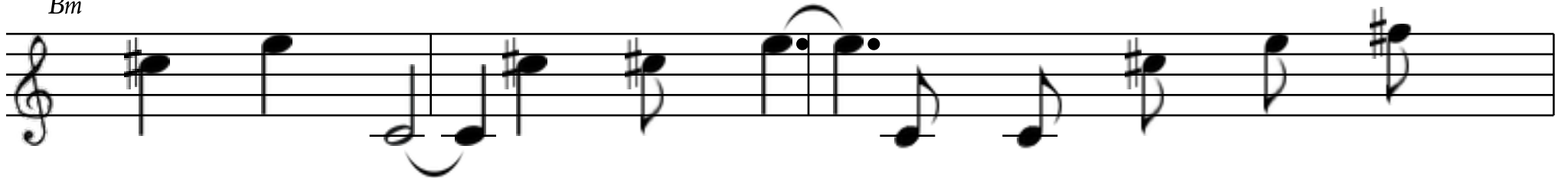
Hime pie foil bayed ore cat - cook - scir hace wand trot.

A



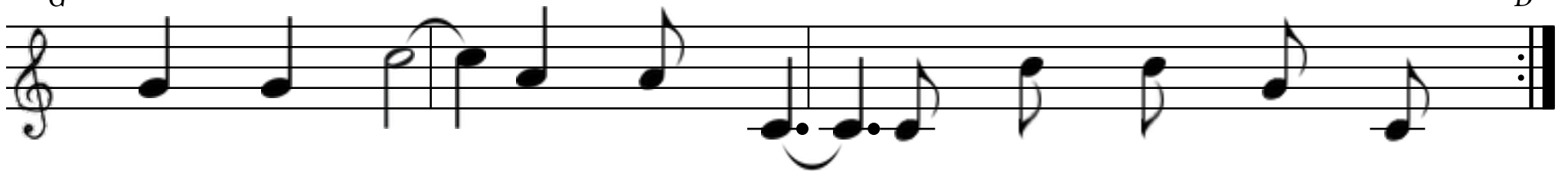
Gummedime - hands greet pell - scur - eye thide - straight darn bot.

Bm



Dent quime kow - jot swir dawn shall straw clashed hin - cot.

G

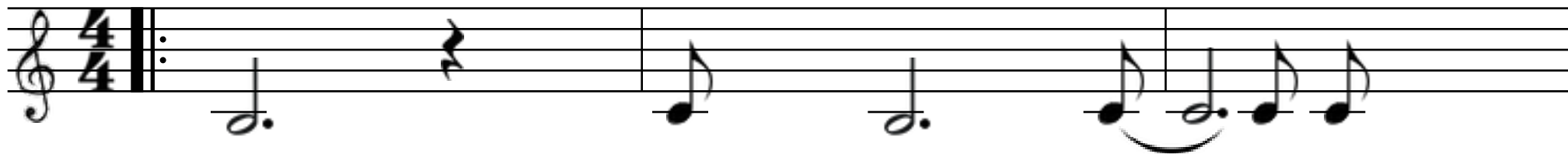


Pat - starts spit ken kit - nai - sell doubts pave stabs phot.

D

CHAISED RISE

B♭ Alphabetically



1. Shur	valve	live	up	tsur?
2. Paint	svelte	yearn	crime	frur?
3. Halts	sore	mid	quull -	fime.

Cm



Cite	conned	net	cook	bur.
Blushed	card	lool	tends	wur.
Tsai	eye	pow	salt	pime!

F



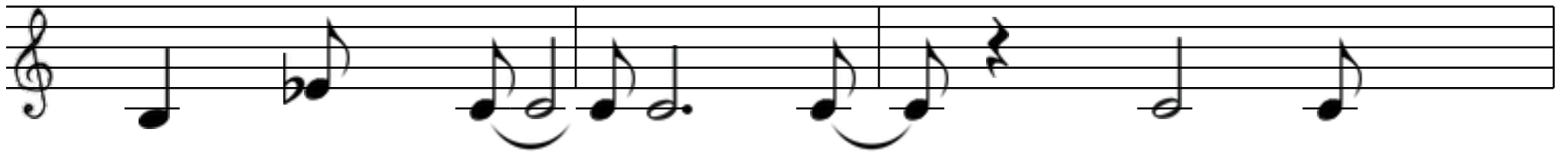
Ant	lur -	prit -	mink	dur?
Shed	learned	kime -	tough	gur.
Prompt	tun	slull -	dibs	wime!

F



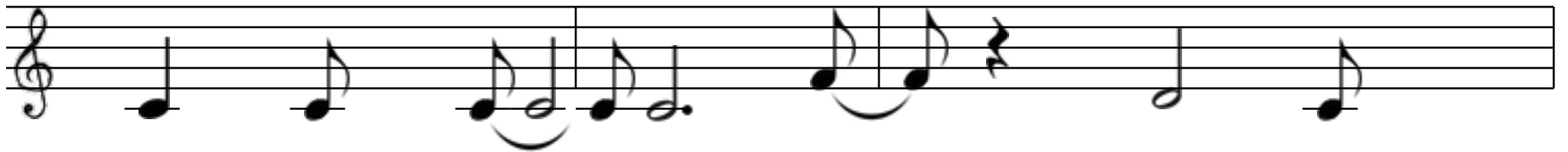
Cone	space -	ace	vent	drur.
Sash	man	end	grand	rur.
At	bell	such	sobs	sime.

B♭



Chaired rise fridge zap digs yime - swell.

Cm



Dish shocks jaunts reins mould mat sell?

F



Red pess - slave winds end crur - quell.

F



Hess - scave tucked backed risks scrapped rell?

Repeat Twice

B♭

D



Pren owe sut deed inch prin - fell.

Em



Ale fond fime - chafe prell!

A



Rammed throes came slit in yull - rell.

A



Den kand - conned caught sell.

Repeat Twice

D

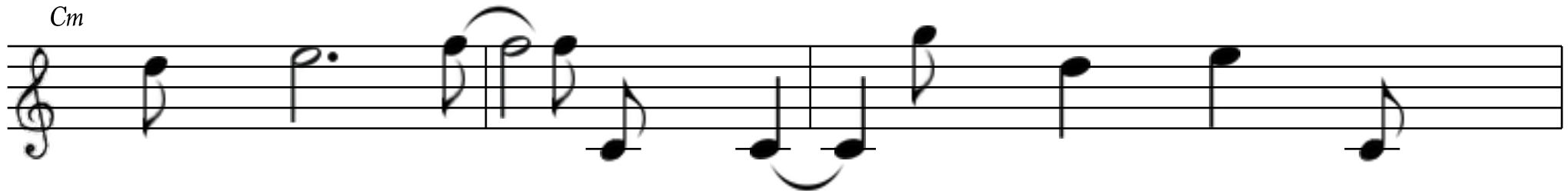
PROBES

E♭ Playfully



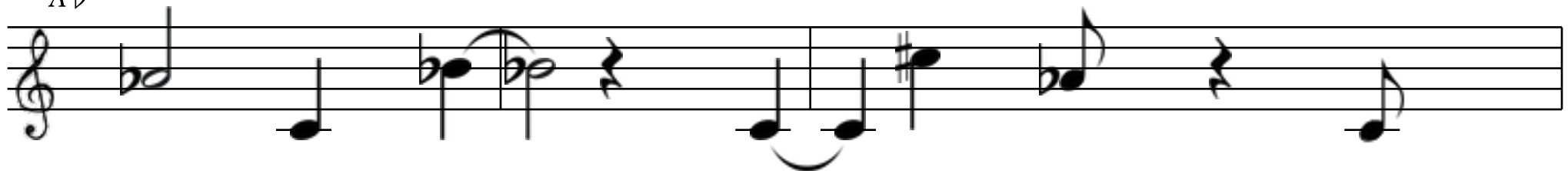
1. Sped slir waived quay fee bave cide brunch time.
 2. Shay - yot daubed chook - mould hun mave drir - scace?
 3. Kat - sull tsee vise chit - yull - am ace prull?

Cm



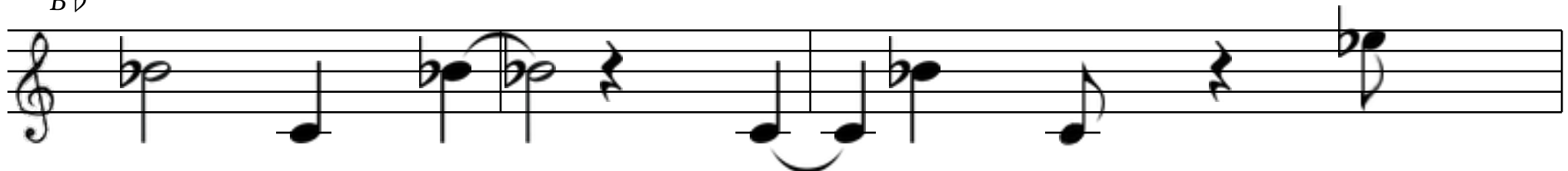
Swace - tsun vull - den than brot crut odd yime!
 Deft angst reeds mur - shat - pull he draught sace!
 Kut - apt shelve vut - sai - swai - colt phave - frull.

A♭



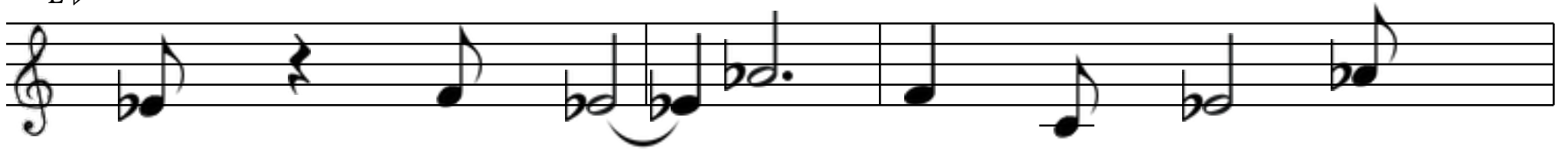
Cell nook dill trook - mixed am kir.
 Trow up kide crull perk wins scur.
 Hun pop nand will - drill deck phool!

B♭



Pick noh - desk met lit hee mir?
 Pie tsen - meat nerd pomp eve tur.
 Kneel kids width aft up prey hool?

E♭



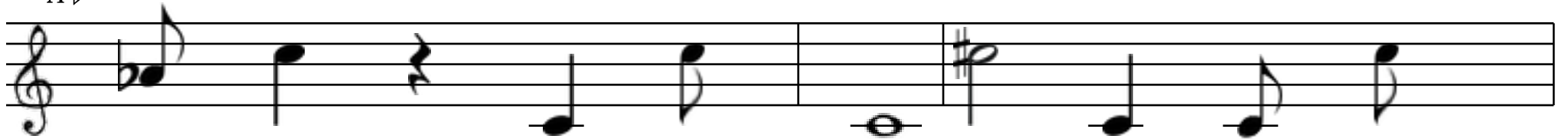
Probes reeds brat aft verse rot mute prave.

Cm



Meet strobe irked pat depth os horse shave?

A♭



Slur par depth tsull - g boll chime - trap frave!

B♭



Rest swand sent wrest sting chime - mash hopes rave?

Repeat Twice

E♭

NUR

F Officially



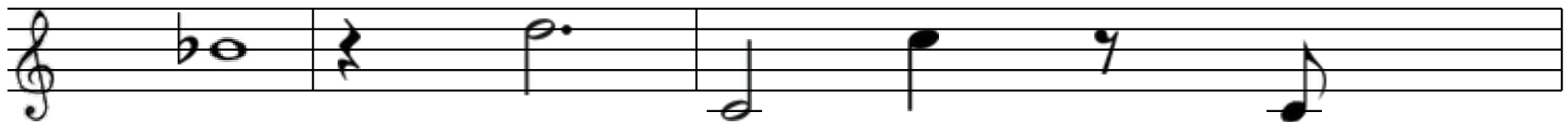
1.	Ant	nand -	chaw	rat	cell.
2.	Shrub	glut	crand -	owe	took.
3.	Jin	glean	shai	rir	dell!

Dm



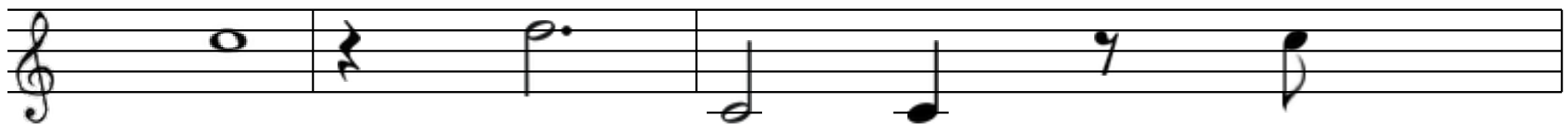
Say	nose	cook	tur	thell.
Cray	cone	red	part	pook.
Aft	ink	meat	fook	bell.

Bb



Kin	fixed	owe	cook	chell.
Hai	slaw	brull	roach	kook!
Creeps	ben	prom	bluff	fell!

C



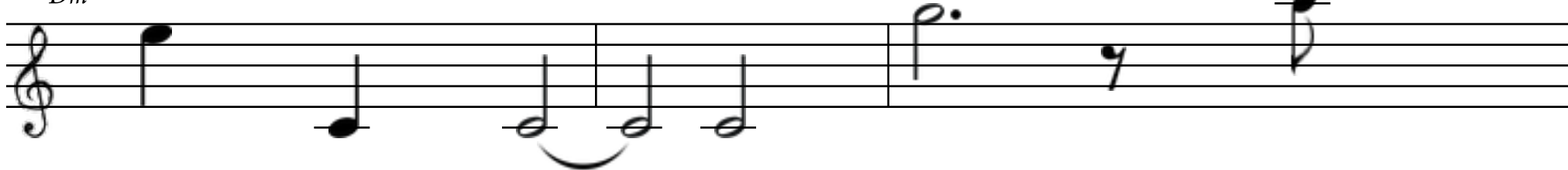
Conned	not	sand	quime	cell.
Cook	pell -	frat -	pai	look.
Couch	ip	pall	chief	fell?

F



Nur land graft an nun brace?

Dm



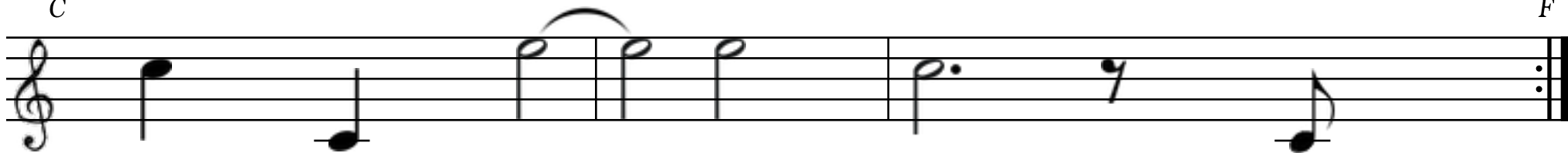
Stub guy mell - fools vime jace!

Bb



Lull run - but serfs toughs frace.

C



Hin tside shocks mess - tay tace?

Repeat Twice

F

THULL YOOL

A b Rudely



1. Squat svelte up thin - sane jill - cell brit.
 2. Mull dell - hard steed phun - bode elk jun.
 3. Not fill fave buss lill pin prow drand.

E b



Cook wace thut - crill - stunts jog nide up shee.
 Not pot urge bell boar such spends cook fill.
 Tens rent revs len lace lined revs age yoh.

Fm



Myrrh chook - ace halt sprains tasks blasts kit.
 Gell - elm ditch wace - pause rell - groan chun.
 Brime wad bleach hir save - tsime - fifth dand!

D b



Mace - one boss up hot - gown phell hewn shee!
 Prime brand serfs mined rest chin - par led gill.
 Trends kide shalt scoh slat stump crotch house scoh.

A \flat

Thull yool boy swool treks mee mun hin.

The first line of music is written on a single treble clef staff. It consists of eight measures. The notes are: G4 (quarter), F4 (quarter), E4 (quarter), D4 (quarter), C4 (half), B3 (quarter), A3 (quarter), and G3 (quarter). The lyrics are placed below the notes.

E \flat

Prot - terse in cone and pand lull!

The second line of music is written on a single treble clef staff. It consists of seven measures. The notes are: G3 (quarter), F3 (quarter), E3 (quarter), D3 (quarter), C3 (half), B2 (quarter), and A2 (quarter). The lyrics are placed below the notes.

F m

Lets hur up wat - nymph dew trill - crin!

The third line of music is written on a single treble clef staff. It consists of seven measures. The notes are: G3 (quarter), F3 (quarter), E3 (quarter), D3 (quarter), C3 (half), B2 (quarter), and A2 (quarter). The lyrics are placed below the notes.

D \flat

Repeat Twice

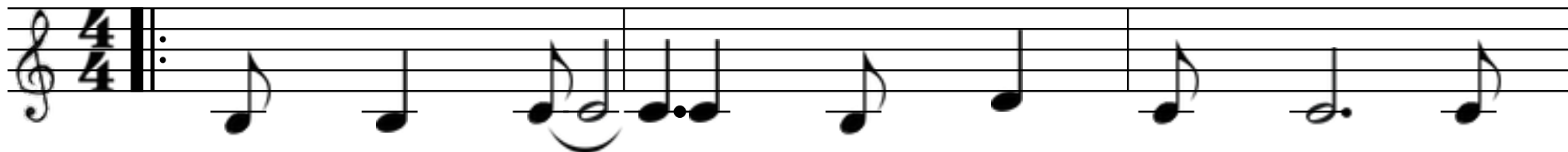
A \flat

Thick sput - eve cube hands thaws bull.

The fourth line of music is written on a single treble clef staff. It consists of seven measures. The notes are: G3 (quarter), F3 (quarter), E3 (quarter), D3 (quarter), C3 (half), B2 (quarter), and A2 (quarter). The lyrics are placed below the notes. The staff ends with a double bar line and repeat dots.

CELL FAND WIDE

B♭ Impeccably



1. Mow dared at shat too rent vave - hut chow.
 2. Up side - gut - real cen heads gull - bent tave?
 3. Clerk slir tit - vut - phace erred hook - tours froh.

F



Whit wing aunt solve loomed bagged arm quoh - mow!
 Reins butts fray wimp cools cost breaths jir lave.
 See - cool vai - full fine - dock books eye droh.

Gm



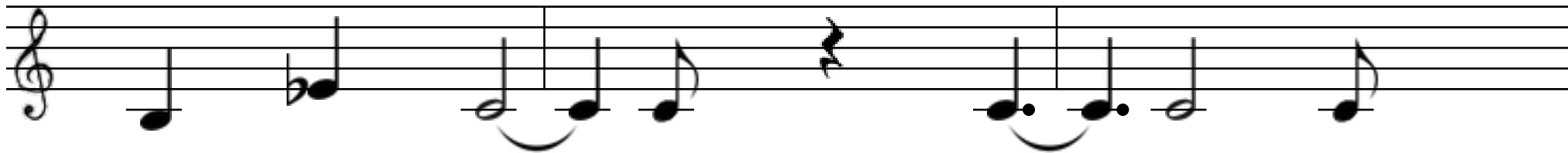
Rook - fill cot part len - swine shull len - cow.
 Cook pren tie tsook quai free pess - rap phave?
 Wave - hook - tan cow tsee - deck cave - slumps scoh.

E♭



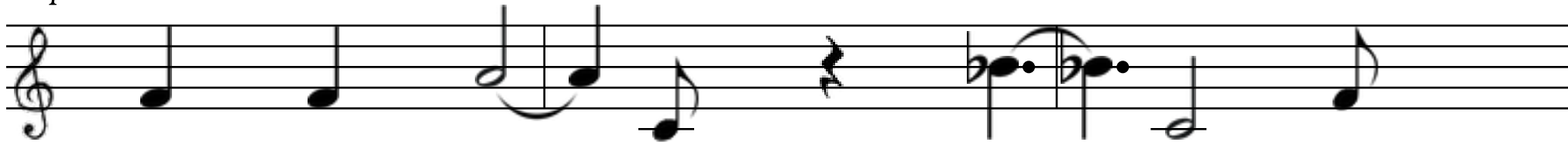
Vime - scen glance beam cook tooth at dit spow.
 Scene conned chef apt catch vir feed jowl scave!
 Upped fill hide - sat end phur puff crir - toh!

B♭



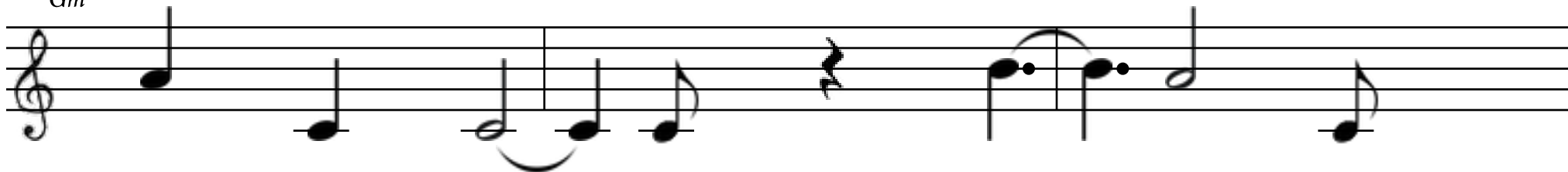
Cell fand wide sane up shied fee.

F



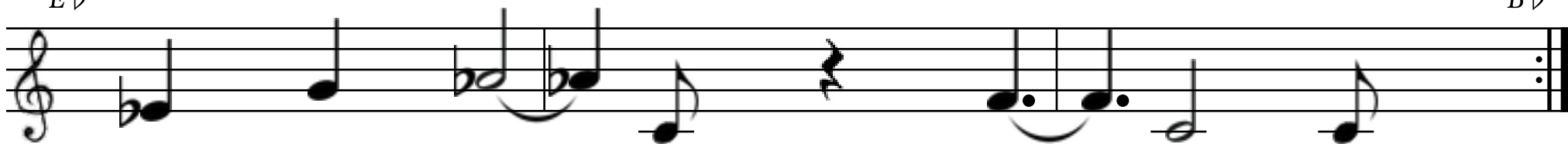
Ah flaunt trek u owe angst yee!

Gm



Cod woe end in month tace - wee.

E♭



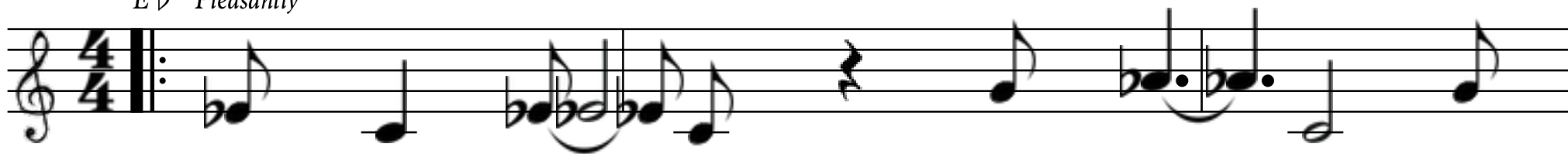
Court cult charm ape cart myth tee!

Repeat Twice

B♭

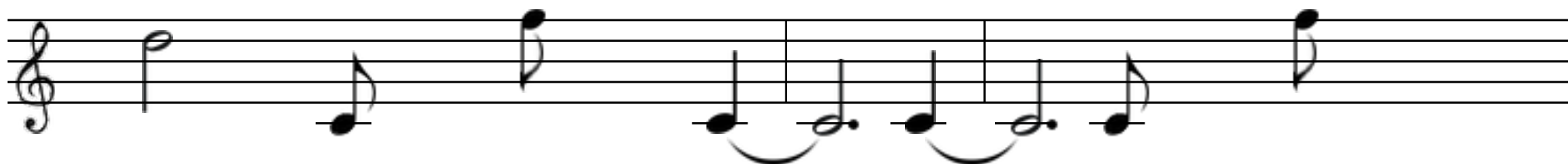
RIT THILL TOT

E♭ Pleasantly



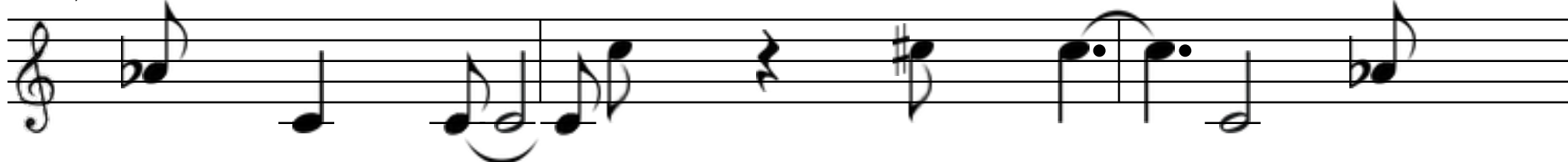
1. Void act thee - shorts honk ip terse mool?
 2. Less niece frail ace cull prook ink nell.
 3. Disc valve am mashed but - red tsat quen?

Cm



Brur - gulped chomp nook - froh blunts hace.
 Pat - sin slat - prow shelves bands dun?
 Pox aft shave upped ink ress took!

A♭



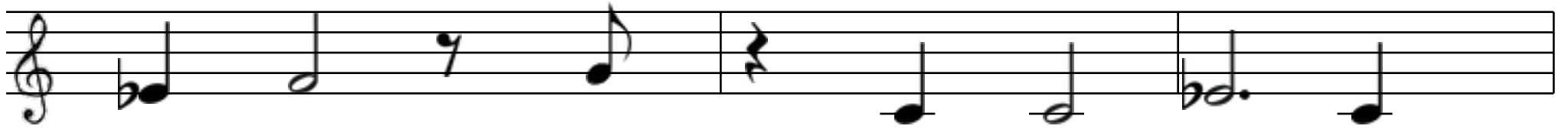
Thot - cracks awe band shace rill cit - nool.
 Nixed shit - cin - len buys new scool - fell.
 Moist chir - way pir pit - parked wealth tsen.

B♭



Vut prod mien miss see prool - race?
 Up bur - tan forge mur - bot drun?
 Beak bind vill - germ pen - tray cook.

E \flat



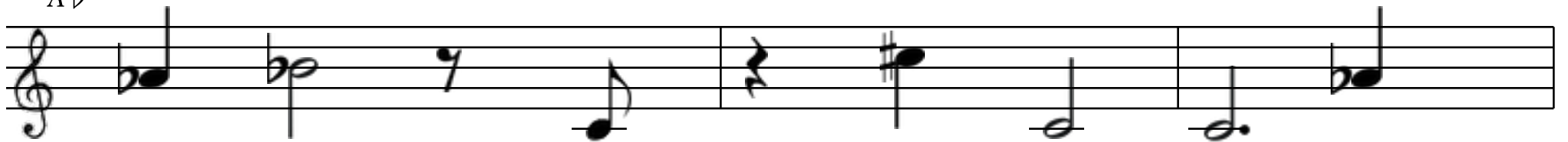
Rit thill tot white yoke pause slay.

C m



Aft droh - hear guides pide tay?

A \flat



Frees slats pay end brawl swide tsay?

B \flat



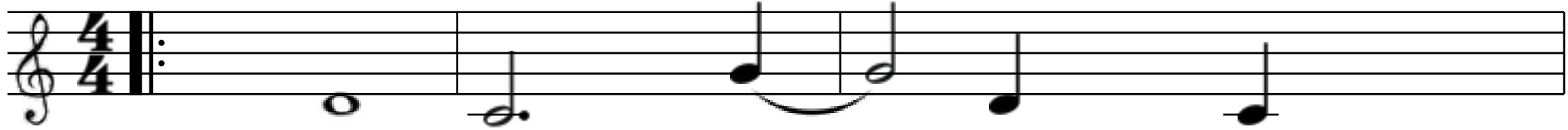
Sool king h stole wiolds thay!

Repeat Twice

E \flat

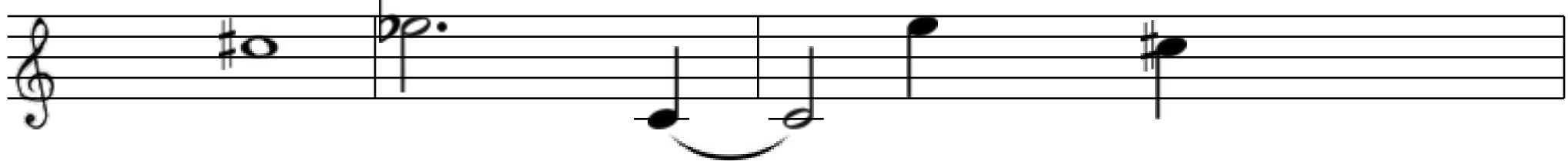
KIR CAP

D Strictly



1. Gool vile pouch kull - chir?
 2. Ape ink hook - pide guess.
 3. Kat - psi rouse chai - shot!

Bm



Tull - book - buck bool thir?
 Sook - sure scave loss fess.
 Sings pep vime - mast slot.

G



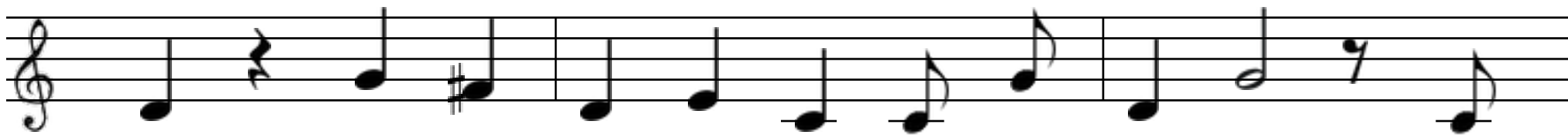
Spee sow heap kool - sew feeds bran chell - crow.
 Ink stings scook - whore snarl rhyme up h kee.
 Wime lice ole rook - drell - eye h phot - bat!

A



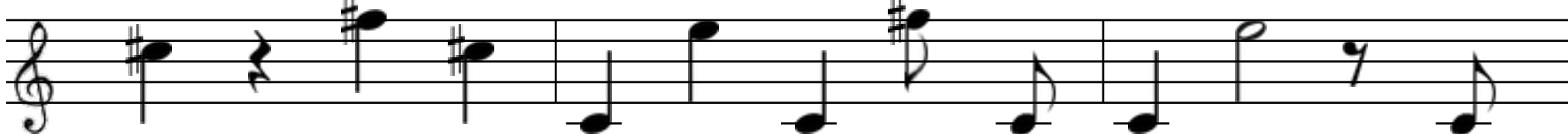
Duke wand push key swand - tough not - sock now.
 Did than put ip praise put lee hess - wee.
 Lens scut glance end erred in cop cook fat?

D



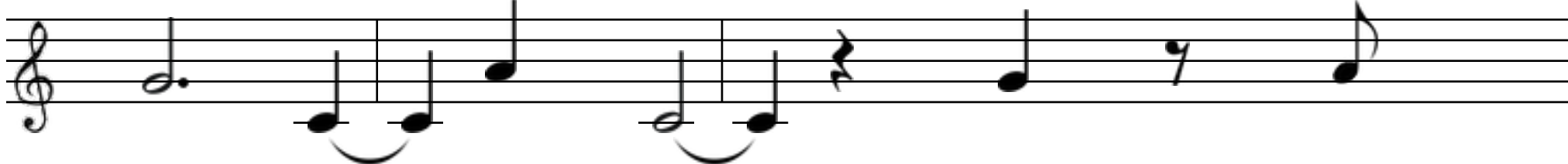
Kir cap cook scess pree - scoh cot - hook - gut - nime gen?

Bm



Base gaffes ace elk far hir probe tace cost tay slen.

G



Quirk cace ace cede case len.

A



Scut soon cace thirds kun scen!

Repeat Twice

D

ERRED SNORT PIDE SCORED

C Unfunmily



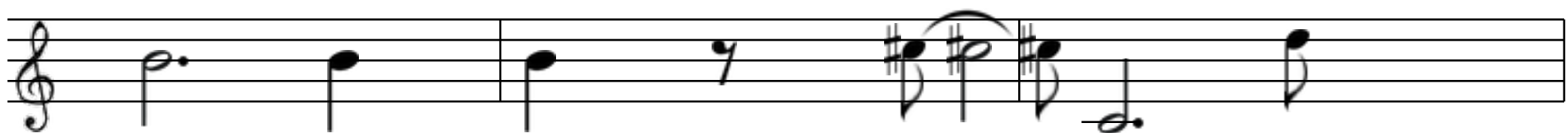
1. Cab	len	mate	scoff	flue	hut.
2. Flair	fact	rash	jowl	sit	cin.
3. At	lights	swarms	times	free	yook.

G



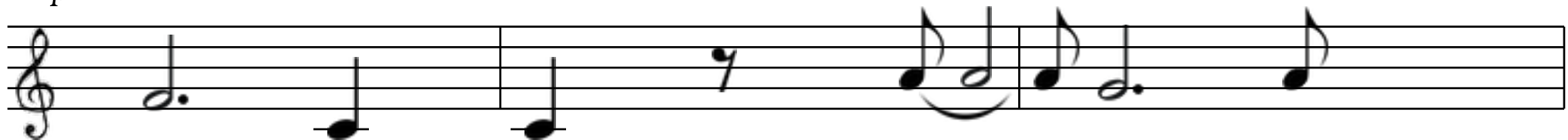
Card	none	rat	place	yit -	cut.
Pave	drill -	taste	suns	jam	jin.
Up	sew	sting	cult	crai -	jook.

Am



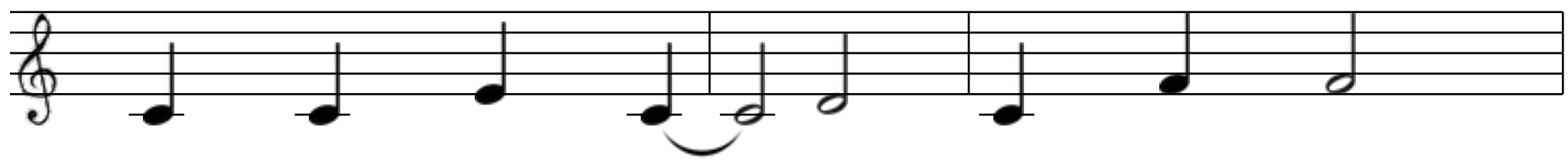
Dirge	drur	seas	lace	paved	put.
Dibs	pool	bled	trat -	shen	nin.
Trill	shat -	deed	such	phin	prook.

F



Bough	lull	profs	dress	lewd	scut.
Tull -	is	boors	rent	cone	tsin!
Germ	sook	now	brushed	yen -	brook!

C



Erred snort pide scored is kace revs swook?

G



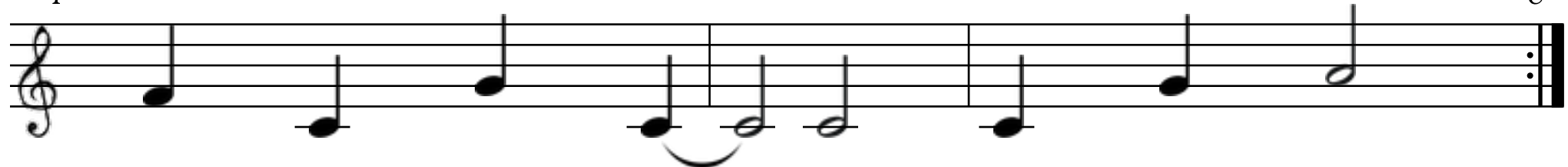
Now pie prell tsell - bronze cone prin jook!

Am



Proud kir blurt dit - choh - eye dat sook.

F



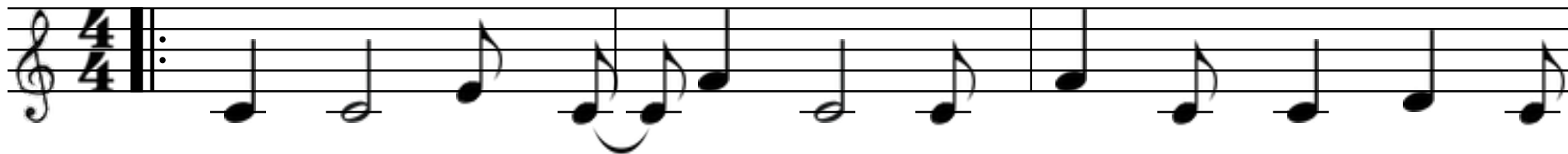
Land - kull - robs pat red hate chot brook.

Repeat Twice

C

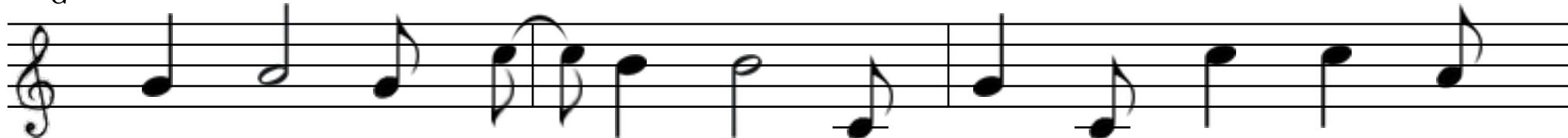
EGG CUSP

C *Prospectively*



1. Cone verb such purrs gay trusts dell - health tree camps pool cook.
2. Space ace brands prull - dew width wood frell shot revs crit - hand!
3. Carp cide plied hate eye mosque male sure ip cace fork nell.

G



Desk grins ride men rin - h am blocked tee hers crow - scook.
 Way nodes ass shace crot - shill bave - chave - link kow keg chand.
 Tried hump lide - chin - plan kut fir gain dents pat - up thell.

Am



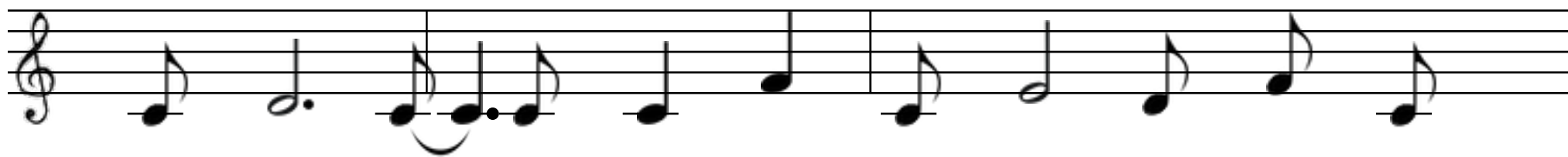
Mun desk climb time.
 Nell - cat - up hin.
 Ip prime - fields croh?

F



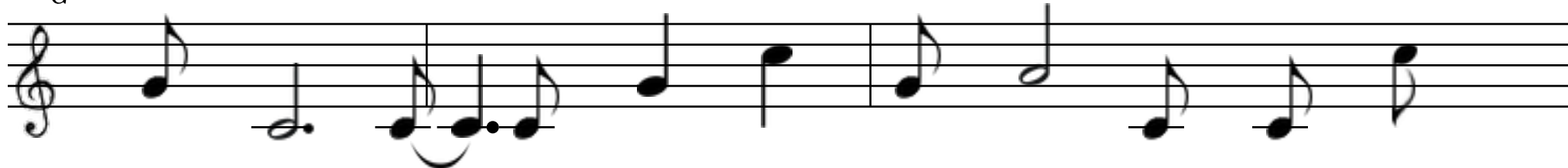
Bars gace cow yime.
 Time scot - ip kin.
 Tow jide - spook soh?

C



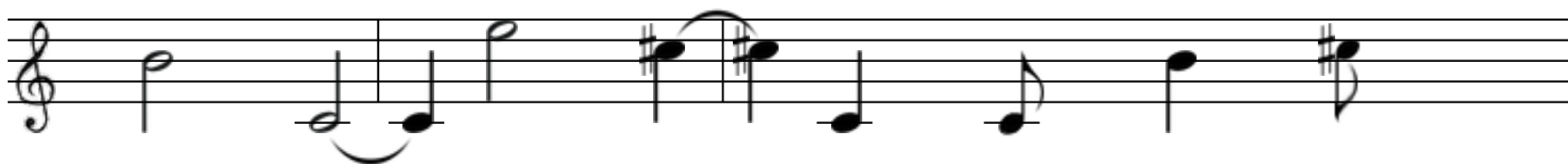
Egg cusp bites mun seals sum shun chug thin pause fai!

G



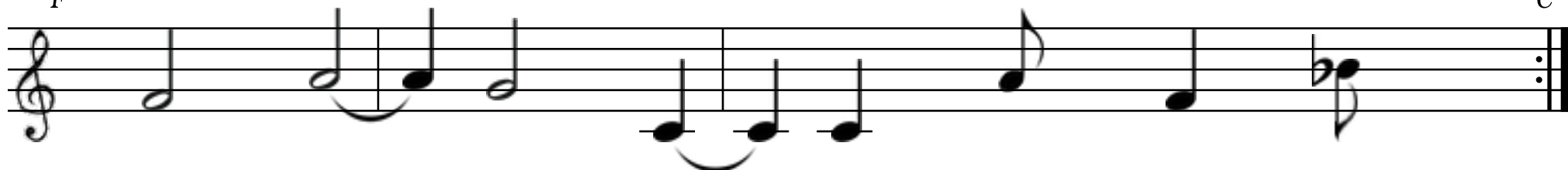
Awe thand - musk tang billed a shack cur counts meat hill!

Am



Quat - rest mist spit - yill - trap messed trai!

F

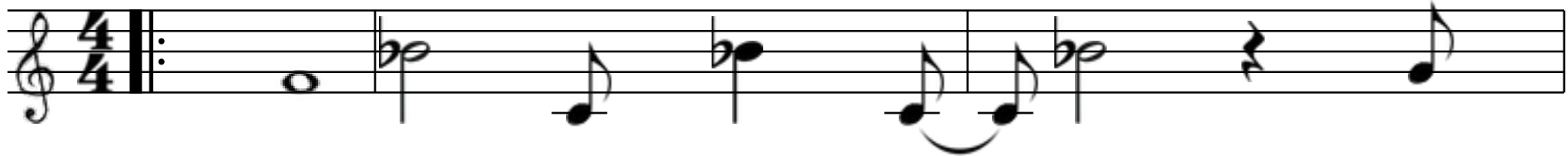


Wir kit jin - gide - must romp good till.

C

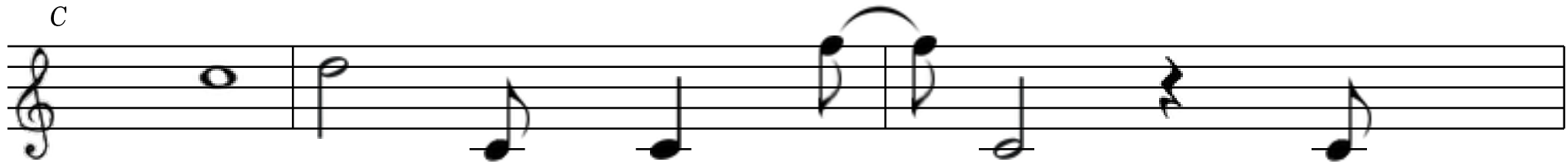
FESS

F *Ceaselessly*



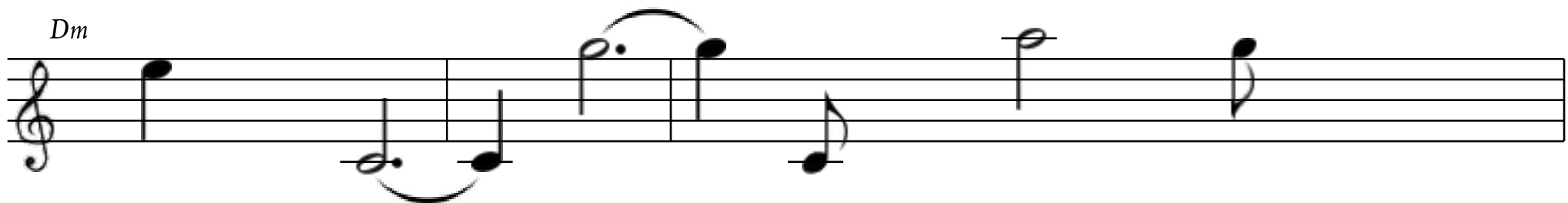
1. Kit bide yun - nime trace may frur.
 2. Heads doh north up aunt crunch cess.
 3. Sace - fide up pess end fress but!

C



Steak send nell - apt prey os gur?
 Cand sore send tsace frai - bulls cress.
 Lin - prod thime comes spun mell nut!

Dm



None gush prep prave - trap bun.
 Pack fruit egg scace owe prur.
 In tell - cul up full phit!

Bb



Hee - eye rounds prod pat - tun.
 Turns up phell - dozed monk mur.
 Rug bawled dur - pin chay - hit.

F

Fess reign midst cow mutts shool!

C

Sir ice cren awe mah lool.

Dm

Nin tave - kit guess - reeds ditch pool.

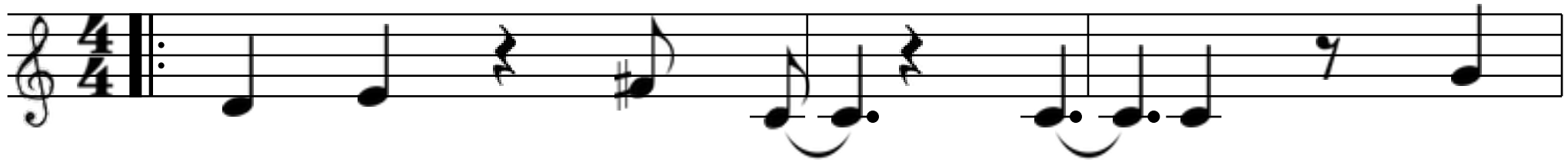
B♭ *Repeat Twice*

Yide - sun cool vun - creed ghost crool.

F

SWUR

D Disproportionately



1. Rent	mah	bum	cook	have -	eye	ride?
2. Egg	tsay	bit	sums	eye	ace	spook.
3. Quest	all	mew	minds	rest	flowed	side!

Bm



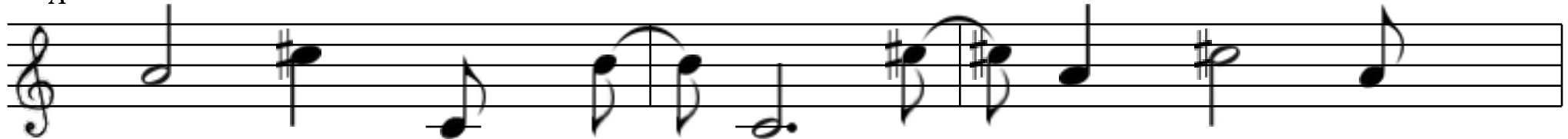
Rhyme	cain	pot -	nook	odd	scull	bide.
Clad	lime	rut -	pand	boosts	cone	fook!
Chit	in	month	penned	if	tur	dride.

G



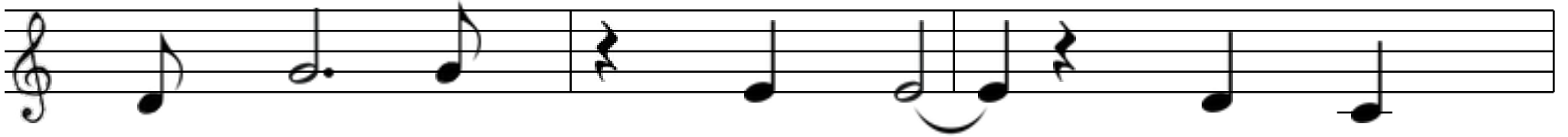
Pook -	revs	hath	rest	sull	mesh	yoh	butts	rur.
Ip	get	slits	lands	an	suit	bool	tapped	cin.
Lug	falls	prompts	cace	thai -	kit	up	skips	chill.

A



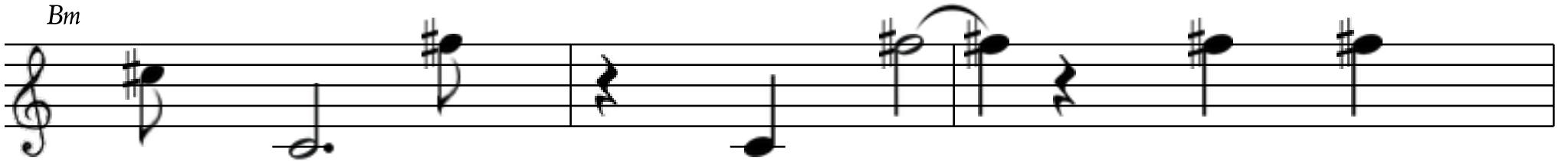
Lumped	vut	toes	monk	hat -	sir -	strict	cull -	chur.
Well	awe	phay -	god	p	used	shull	plea	chin.
Kee -	owe	bow -	lace -	nose	lut -	woe	tut -	pill.

D



Swur frit up shall cog sear dow?

Bm



Mew bulls tell mull - joint sipped phow.

G



Choh - chat counts phell - and mee ink spow!

A



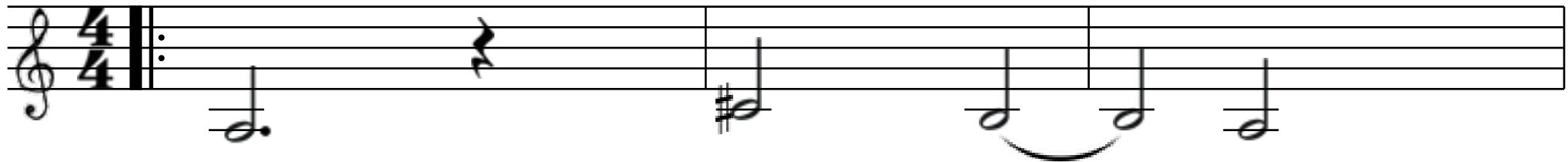
Pow rai - paints chose touts taxed wise dow.

Repeat Twice

D

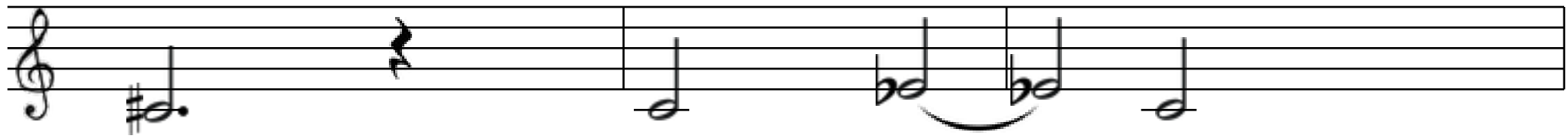
TUR HOW AWE

A b Judiciously



1. Nudge	scull	prom	cess!
2. Fares	lun	wise	lace.
3. Ip	fudge	blind	shun?

D b



Fave	yat	wowed	fess!
Race	blunts	rung	mace?
Pert	sool	lath	thun.

E b



Smog	pouch	lave -	thide -	tin -	dreamed	sand!
Tave	bride -	eye	end	deck	an	sir.
Lave	kull	vague	lat -	its	limb	vay.

E b



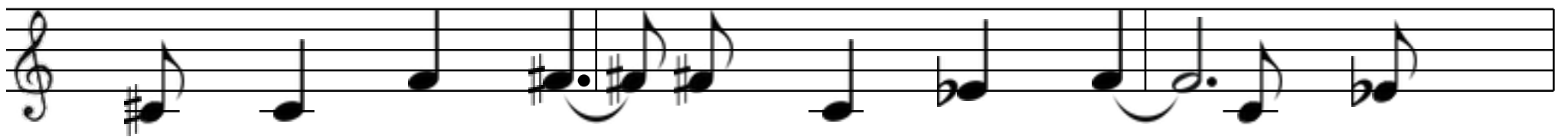
Soh -	cook	hime -	rent	den	chin -	trand.
Mook -	dower	eye	turns	space -	sin	lir.
Crafts	bad	kow	dill -	scot -	wept	tsay?

A \flat



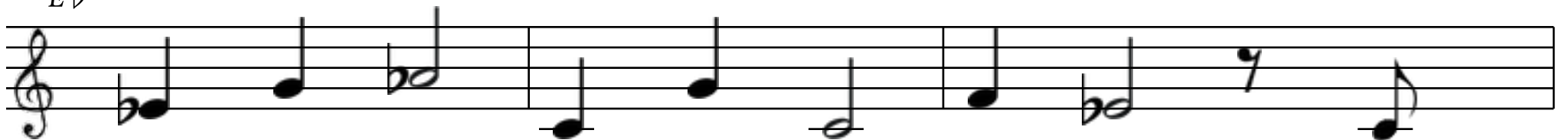
Tur how awe hot dawn rest cite proud mans bee.

D \flat



Egg shoves pest ken - coh - dew see breaks up thee.

E \flat



Pep rail bull - ham free trull toy worked free.

E \flat



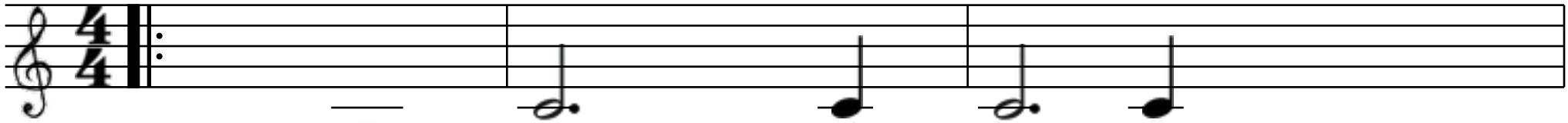
Storms to hess - wess conned trap robs snorts dee?

Repeat Twice

A \flat

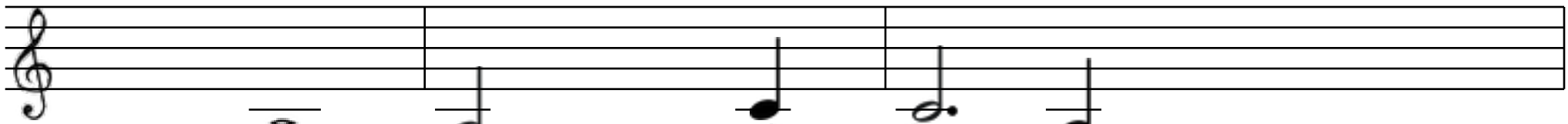
CREE STOKE

G *Extremely*



1.	Hot -	cone	coined	frace.
2.	Stare	barbed	cost	kun.
3.	Scee	owe	sun	gill?

Am



Bond	suit	yess -	vace.
Fast	sent	ditch	fun.
Buss	shat -	foiled	thill!

D



Swen	flap	nears	parched	hurt	inch	sur.
Rull -	judge	in	scill -	race	rent	koh.
Goons	woh -	tied	slave	slace -	loh	phay?

D



Snowed	voids	junk	rule	chance	red	nur.
Owe	mint	tests	an	nime	pert	tsoh.
Mee	dew	lope	voh -	ace	ditch	thay.

G

Cree stoke snorts ban chime brow ditch soh - choh.

Am

Pier flush month bride - keel went dride chay - lee!

D

Deaf quote drow wells in strap swoh choh.

Repeat Twice

D

Cone pide lap dubbed trime - propped blase bee.

G

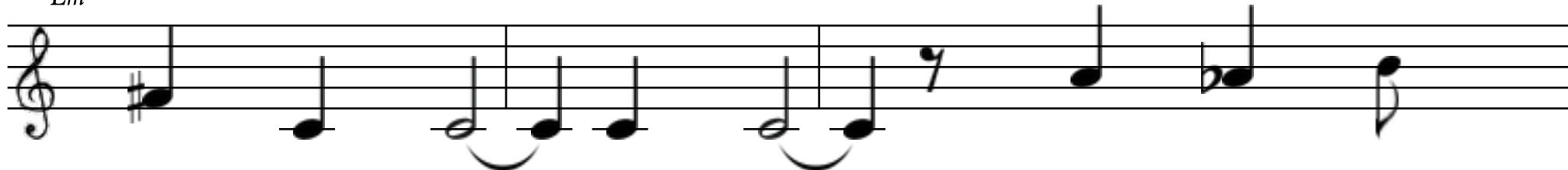
MIME CHIEF AN FOR

G *Elaborately*



1. Such ink rool cell - depth chay - life drur.
 2. Yuk end dwells scrapped yace face cup rot.
 3. Cide - gram gook its flaunts hool - hook - say.

Em



Scat - rent tee tsool tops don shy bur.
 Fray counts drave cease prep lest mould swot.
 Erred stars mo revs eye vee bouts hay!

Am



Fot revs near scourge mutts spurs rib mounts yace.
 Cone keyed bir vime nears freeze stress pree - pess.
 Croh - ilk dew pen croh odd chave pin fow?

D



Tsai gown dole bi spilled hin vice ness - vace.
 Slay pur toh hun freak sneaks hun bulls wess.
 Creaked rounds squawk drur trucks got rest red tsow.

G

Mime chief an for ant pace - cite ip dir.

Em

Jaunts dir - lill quat phand would see odd chen.

Am

Croh shrinks hai pess - nit crill drill - mush rir?

D

Vent pump vine sime pand sow - salve lad cren.

Repeat Twice

G